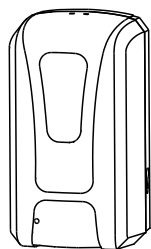


SENSOR SOAP DISPENSER INSTALLATION

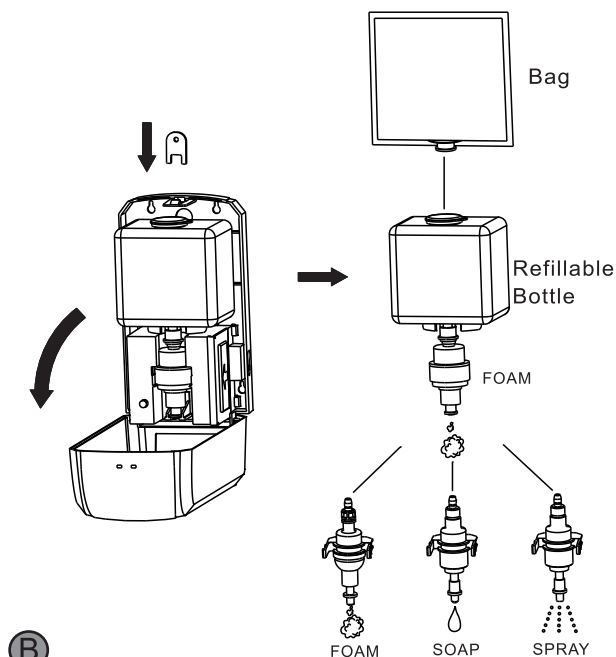
Ref. 04061 - 04063

simex
by clinimax



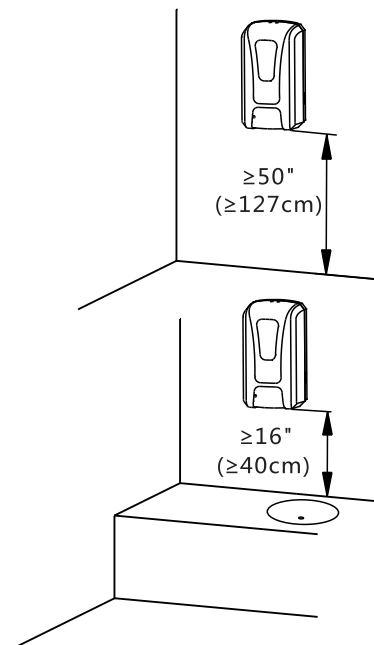
- Size (LxWxH) : 15.8x11.6x28.6cm
- Weight: 950g

A

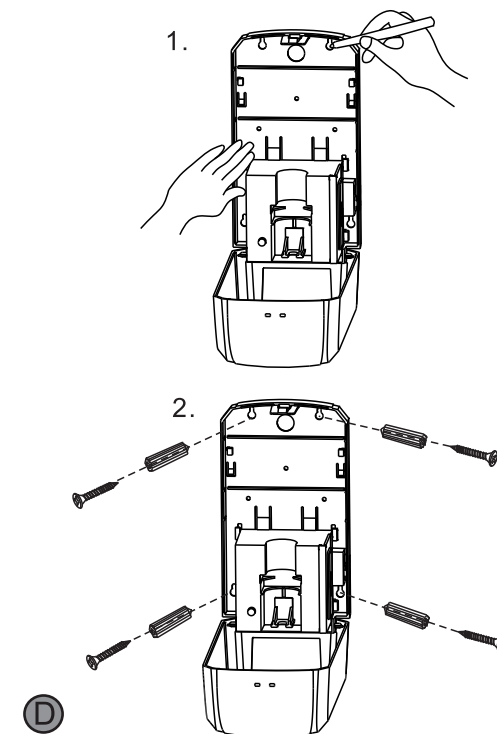


B

Recommended Installation Height

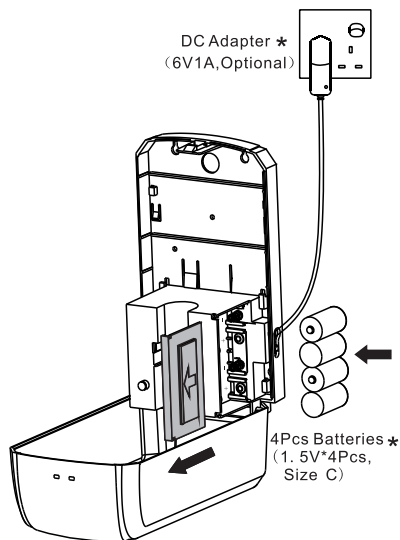


C



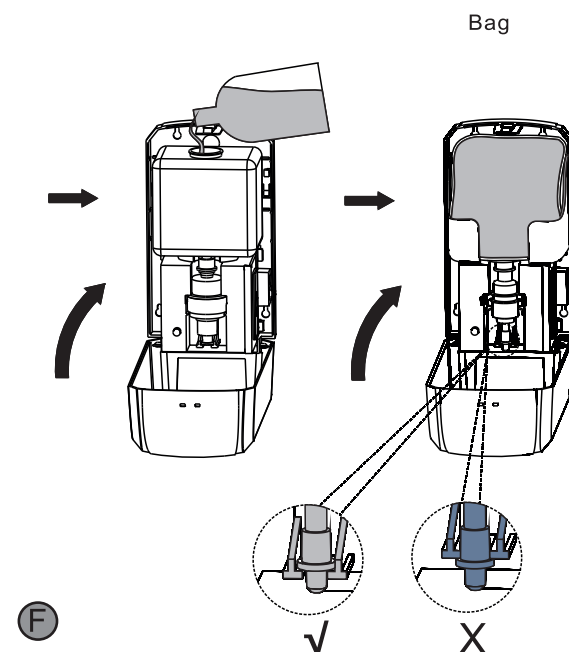
D

Install Batteries



* The Standard Packing is not including DC Adapter and Batteries

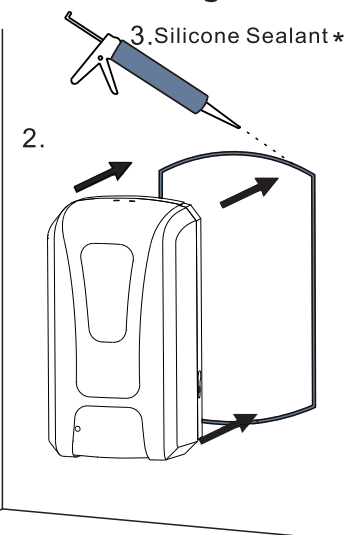
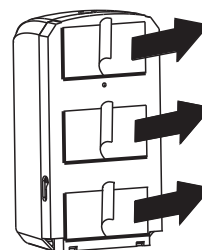
E



F

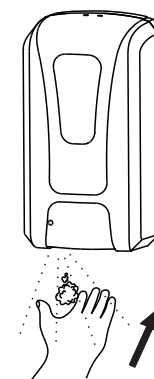
Installation with Adhesive Backing
(no screws)

1. Double-sided adhesive*
(Optional)



* The standard Packing is not including Double-sided adhesive and Silicone sealant

G



- UV disinfection
- Dual color LED : Green is working and Stand-by;
Red is Low Battery Alarm.
- Sensing Distance: 8-12cm

H