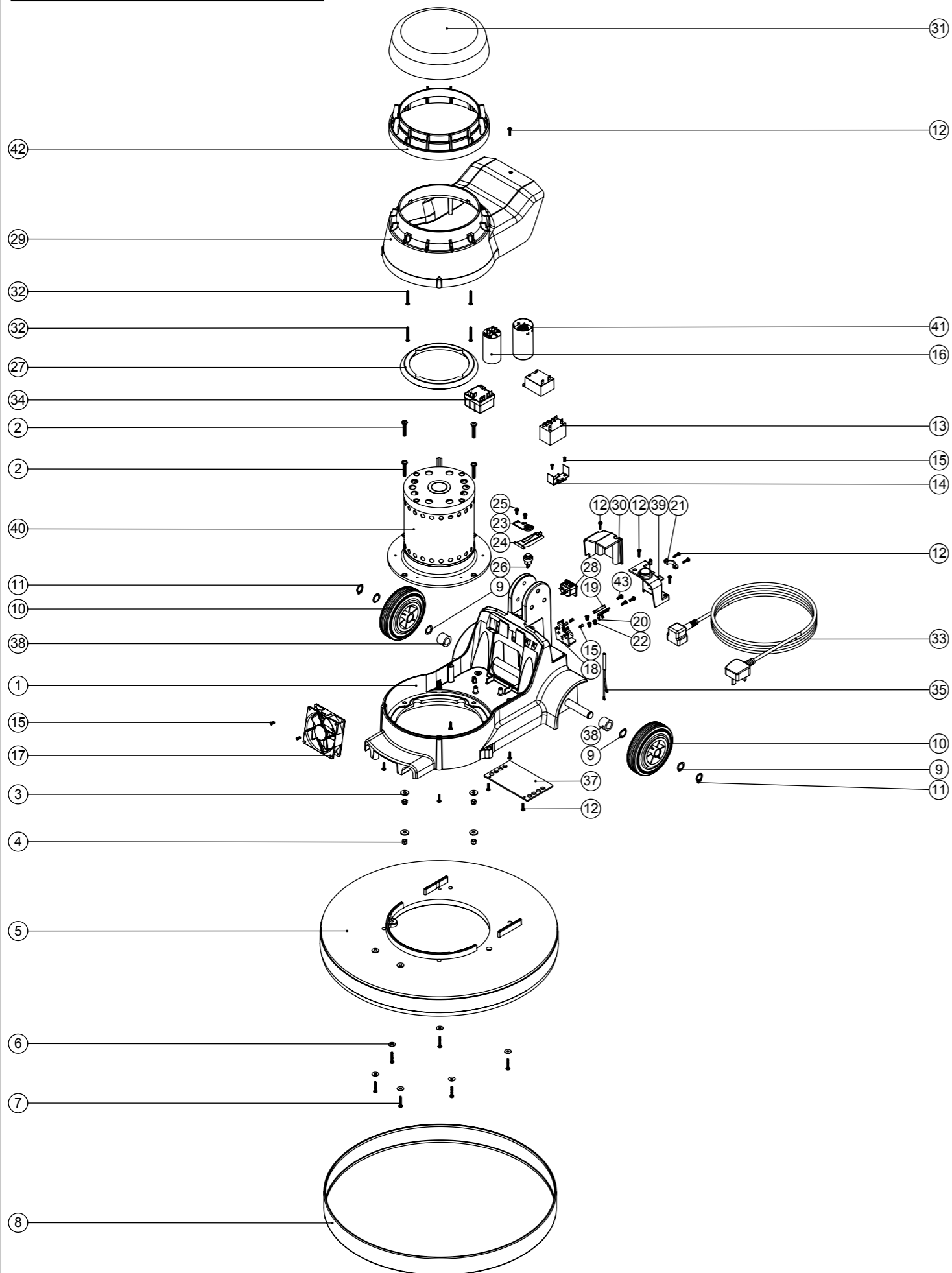


# Numatic International Spare Parts

Model No: NRL 1500S BASE ASSEMBLY EXPLODED DRAWING (EXP-0926)

234495  
DRAWING: EXP-0926 ISS:A14  
06/05/2010

NB: FOR WIRING SEE DRAWING: WD-0345



# Numatic International Spare Parts

Model No: NRL 1500S BASE ASSEMBLY EXPLODED DRAWING (EXP-0926)

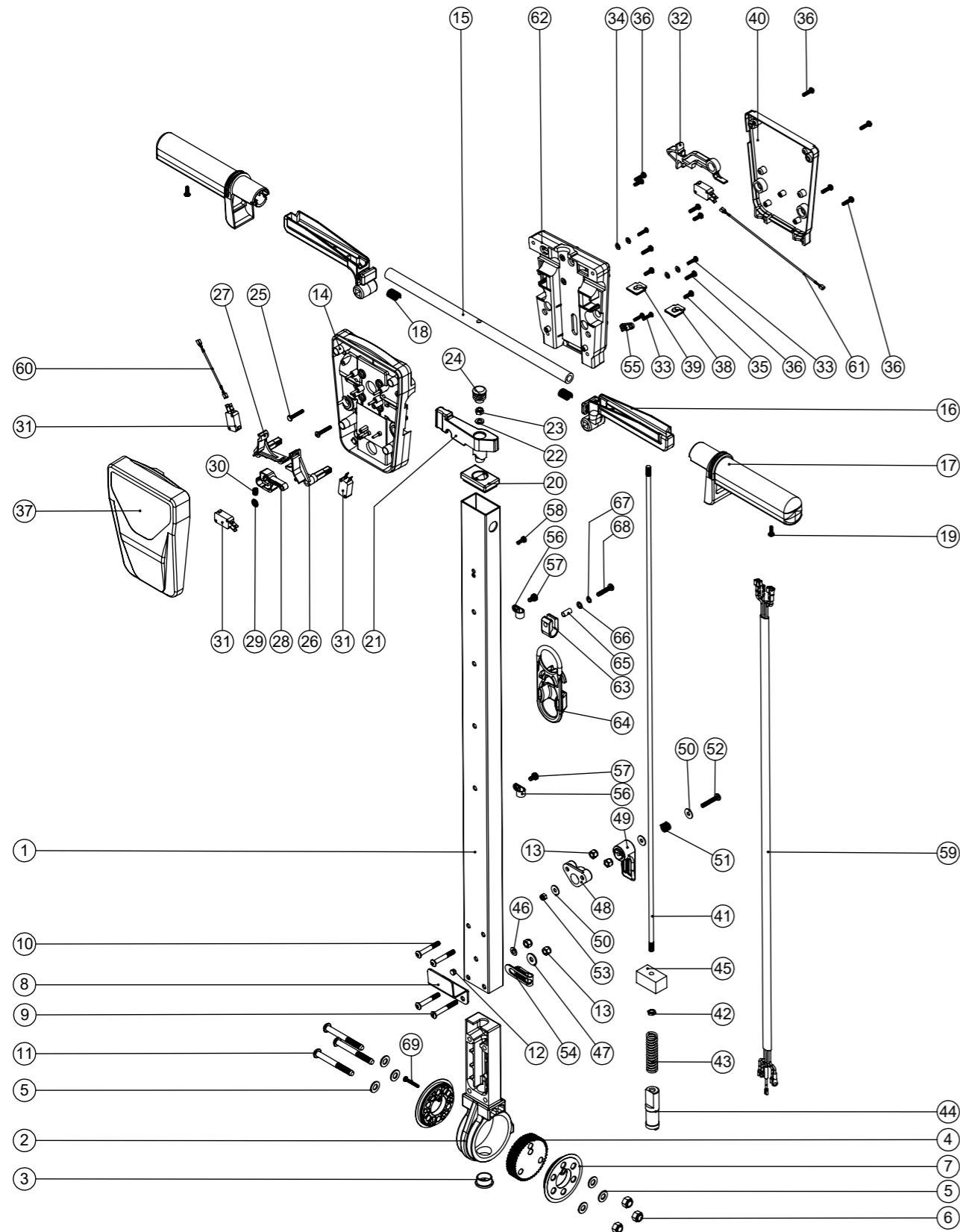
| POS: | ITEM NO: | DESCRIPTION:   | COMMENTS: |
|------|----------|--|-----------|
| 1    | 329765   | GRAPHITE BASE MOULDING SUB ASSEMBLY (PRINTED C/W NUTSERT)                      |           |
| 2    | 219268   | M6 X 35MM LONG POZI PAN SCREW  |           |
| 3    | 219008   | M6 FORM G WASHER   |           |
| 4    | 219088   | M6 NYLON INSERT NUT  |           |
| 5    | 229763   | 20 INCH FLOOR MACHINE DECK   |           |
| 6    | 219644   | M5 FORM G STAINLESS STEEL WASHER   |           |
| 7    | 219369   | No8 X 1 INCH LONG POZI PAN STAINLESS STEEL PLASTITE SCREW                      |           |
| 8    | 206846   | GREY BUFFER RING 1600 GREY   |           |
| 9    | 219219   | 21.5MM X 16.3MM WAVE WASHER  |           |
| 10   | 229060   | WHEEL GREY BLACK HUB   |           |
| 11   | 229051   | EXTERNAL CIRCLIP   |           |
| 12   | 219914   | NO6 X 5/8 INCH LONG POZI-PAN PLASTITE STAINLESS STEEL SCREW                    |           |
| 13   | 206575   | 240V / 25A RELAY   |           |
| 14   | 206500   | RELAY BRACKET  |           |
| 15   | 219651   | M4 X 10MM LONG POZI PAN THREAD CUTTING SCREW                                   |           |
| 16   | 220876   | 20 MFD MOTOR RUN CAPACITOR (450V)  |           |
| 17   | 205072   | PROCESSED 12V DC BRUSHLESS FAN   |           |
| 18   | 216288   | TERMINAL BLOCK   |           |
| 19   | 206562   | CONTACT PIN  |           |
| 20   | 206563   | EARTH CONTACT PIN  |           |
| 21   | 216290   | CABLE CLAMP  |           |
| 22   | 219009   | M4 BRASS TAPPEX INSERT   |           |
| 23   | 216293   | LEVER PLATE  |           |
| 24   | 216292   | CUT OUT LEVER  |           |
| 25   | 219677   | No4 X 10MM LONG POZI PAN PLASTITE SCREW  |           |
| 26   | 229454   | HANDLE SWITCH  |           |
| 27   | 227556   | TOP MOTOR GASKET   |           |
| 28   | 220964   | APPLIANCE OUTPUT SOCKET  |           |
| 29   | 229441   | FLOOR MACHINE MIDDLE SECTION MOULDING  |           |
|      | 236136   | MAINS CABLE (15.0 METERS / 1.5MM / 3 CORE YELLOW CABLE / SOCKET + EURO PLUG)   |           |
|      | 236087   | MAINS CABLE (15.0 METERS / 1.5MM / 3 CORE CABLE / SOCKET + AUSTRALIAN PLUG)    |           |
|      | 236078   | MAINS CABLE (15.0 METERS / 1.5MM / 3 CORE CABLE / SOCKET + SWISS PLUG)         |           |
|      | 236081   | MAINS CABLE (15.0 METERS / 1.5MM / 3 CORE CABLE / SOCKET + SOUTH AFRICAN PLUG) |           |
| 30   | 216291   | OUTPUT COVER   |           |
| 31   | 328112   | NU SPEED TOP SECTION MOULDING PRINTED  |           |
| 32   | 219848   | NO6 X 1 3/8 INCH LONG POZI PAN SCREW   |           |
| 33   | 236072   | MAINS CABLE (15.0 METERS / 1.5MM / 3 CORE CABLE / SOCKET + UK PLUG)            |           |
| 34   | 902715   | SINGLE SPEED RELAY 230V, RVA6N0D   |           |
| 35   | 321193   | AC LED WITH TERMINALS  |           |
| 36   | 206753   | UNIVERSAL POWER SUPPLY   |           |
| 37   | 329228   | GAURD PLATE  |           |
| 38   | 208015   | WHEEL SPACER   |           |
| 39   | 206865   | 16A INPUT COVER C/W WINDOW PLUG  |           |
| 40   | 205217   | COMBINED INDUCTION MOTOR 4POLE 220-240V 50Hz                                   |           |
| 41   | 208265   | MOTOR START CAPACITOR 98 MFD   |           |
| 42   | 229486   | GREY TALL MOTOR INSERT MOULDING  |           |
| 43   | 219471   | M4 X 12MM LONG POZI PAN SEMS SCREW   |           |

# Numatic International Spare Parts

Model No: NR HANDLE ASSEMBLY EXPLODED DRAWING (EXP-0943)

NB: FOR WIRING SEE DRAWING: WD-0345

234514  
DRAWING: EXP-0943 ISS:A17  
25/03/2020



# Numatic International Spare Parts

Model No: NR HANDLE ASSEMBLY EXPLODED DRAWING (EXP-0943)

| ITEM: | PART No: | DESCRIPTION   | COMMENTS           | QTY. |
|-------|----------|---|--------------------|------|
| 1     | 429096   | LOLINE HANDLE TUBE PAINTED (830)                            |                    | 1    |
| 2     | 900398   | HANDLE CASTING MACHINED (HNS VERSION)                       |                    | 1    |
| 3     | 229099   | 25MM DIA HOLE PLUG  |                    | 1    |
| 4     | 900397   | MINI ADJUSTMENT GEAR  |                    | 1    |
| 5     | 219010   | M8 FORM A WASHER  |                    | 6    |
| 6     | 219078   | NUT.M8.NYLON INSERT.Z/PL                                    |                    | 3    |
| 7     | 900396   | ADJUSTMENT GEAR SPACER                                      |                    | 2    |
| 8     | 329000   | HANDLE BRACKET  |                    | 1    |
| 9     | 219881   | M6 X 45MM SOCKET BUTTON HEAD SCREW                          |                    | 1    |
| 10    | 219807   | M6 X 40MM LONG SOCKET BUTTON HEAD BOLT                      |                    | 3    |
| 11    | 219806   | M8 X 70MM LONG SOCKET BUTTON HEAD BOLT                      |                    | 3    |
| 12    | 229009   | BLANKING PLUG   |                    | 1    |
| 13    | 219088   | M6 NYLON INSERT NUT   |                    | 4    |
| 14    | 227576   | FRONT INNER HALF MOULDING                                   |                    | 1    |
| 15    | 338269   | CROSS TUBE  |                    | 1    |
| 16    | 227581   | TRIGGER MOULDING (GREY)                                     | RED VERSION 903547 | 2    |
| 17    | 227580   | HAND GRIP MOULDING  |                    | 2    |
| 18    | 219803   | TRIGGER COMPRESSION SPRING                                  |                    | 2    |
| 19    | 219270   | No8 X 1/2 INCH LONG POZI PAN SELF TAP SCREW                 |                    | 2    |
| 20    | 227582   | HANDLE PLUG MOULDING  | RED VERSION 903546 | 1    |
| 21    | 227583   | ADJUSTMENT LEVER MOULDING                                   | RED VERSION 903545 | 1    |
| 22    | 219493   | M6 NYLON WASHER   |                    | 1    |
| 23    | 219642   | M6 STAINLESS STEEL NYLON INSERT NUT                         |                    | 1    |
| 24    | 20638V   | 19MM BLACK TUBE END STOP                                    |                    | 1    |
| 25    | 219811   | NO8 X 1 INCH LONG POZI-PAN SELF TAP SCREW                   |                    | 2    |
| 26    | 227585   | LEFT HAND SWITCH OPERATING LEVER MOULDING                   |                    | 1    |
| 27    | 227586   | RIGHT HAND SWITCH OPERATING LEVER MOULDING                  |                    | 1    |
| 28    | 227587   | CENTRE SWITCH OPERATING LEVER MOULDING                      |                    | 1    |
| 29    | 219805   | 4MM SPIREFIX  |                    | 1    |
| 30    | 219804   | SWITCH COMPRESSION SPRING                                   |                    | 1    |
| 31    | 229483   | SNAP ACTION SWITCH  |                    | 4    |
| 32    | 227584   | INTERLOCK LEVER MOULDING                                    |                    | 1    |
| 33    | 219107   | NO6.5/8 INCH LG.POZI-PAN.SCREW.Z/PL.PLASTITE                |                    | 4    |
| 34    | 219206   | M4 FORM A WASHER  |                    | 4    |
| 35    | 219569   | No8 X 1/2 INCH LONG POZI PAN STAINLESS STEEL PLASTITE SCREW |                    | 4    |
| 36    | 219105   | No8 X 5/8 INCH LONG POZI PAN PLASTITE SCREW                 |                    | 8    |
| 37    | 318959   | PRINTED FRONT COVER MOULDING                                |                    | 1    |
| 38    | 329539   | MODIFIED BLANKING PLATE                                     |                    | 1    |
| 39    | 227666   | BLANKING PLUG   |                    | 1    |
| 40    | 318968   | PRINTED REAR COVER MOULDING                                 |                    | 1    |
| 41    | 229484   | 840MM HANDLE LOCKING ROD                                    |                    | 1    |
| 42    | 219099   | M6 HALF NUT   |                    | 1    |
| 43    | 229138   | SPRING  |                    | 1    |
| 44    | 229073   | GEAR LOCKING PIN  |                    | 1    |
| 45    | 229030   | ANTI VIBRATION PAD  |                    | 1    |
| 46    | 219007   | M6 FORM B WASHER  |                    | 1    |
| 47    | 219008   | M6 FORM G WASHER  |                    | 1    |
| 48    | 227806   | CABLE RELEASE BASE MOULDING                                 | RED VERSION 903882 | 1    |
| 49    | 227807   | CABLE RELEASE TOP MOULDING                                  | RED VERSION 903883 | 1    |
| 50    | 219644   | M5 FORM G STAINLESS STEEL WASHER                            |                    | 3    |
| 51    | 206599   | SPRING (REF:C5514370)                                       |                    | 1    |
| 52    | 219720   | M5 X 30MM LONG STAINLESS STEEL POZI PAN SCREW               |                    | 1    |
| 53    | 219076   | M5 NYLON INSERT NUT   |                    | 1    |
| 54    | 229139   | P-CLIP  |                    | 1    |
| 55    | 229669   | LOLINE HANDLE CABLE CLAMP                                   |                    | 1    |
| 56    | 219393   | P CLIP  |                    | 2    |
| 57    | 219047   | M5 X 10MM LONG POZI PAN SEMS SCREW                          |                    | 2    |
| 58    | 219471   | M4 X 12MM LONG POZI PAN SEMS SCREW                          |                    | 1    |
| 59    | 230134   | NR 5 CORE LOOM ASSEMBLY (UK/EURO)                           |                    | 1    |
| 60    | 321247   | 60MM LONG BLUE LINK WIRE                                    |                    | 1    |
| 61    | 321248   | 190MM LONG BLUE LINK WIRE                                   |                    | 1    |
| 62    | 229509   | REAR INNER HALF MOULDING (FR)                               |                    | 1    |
| 63    | 219743   | CABLE CLEAT   |                    | 1    |
| 64    | 902312   | CABLE STRESS RELIEF   |                    | 1    |
| 65    | 903192   | SPIROL SPACER SP100 5MM NOM ID x 14MM                       |                    | 1    |
| 66    | 219355   | M5 FORM A STAINLESS STEEL WASHER                            |                    | 1    |
| 67    | 219016   | M5 SHAKEPROOF WASHER  |                    | 1    |
| 68    | 219575   | M5 X 25MM LONG POZI PAN STAINLESS STEEL SCREW               |                    | 1    |
| 69    | 291150   | NO6 X 1 INCH LONG POZI PAN SCREW S/S                        |                    | 1    |