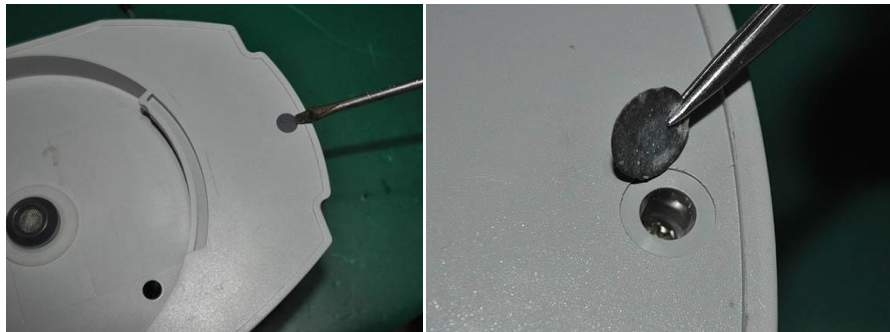
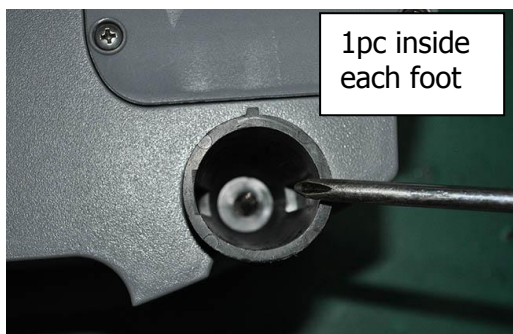


There are 8pcs of screws on the base to disassemble it



1pc inside the base upper cover which is covered by a dark grey PVC sticker



1pc inside each foot



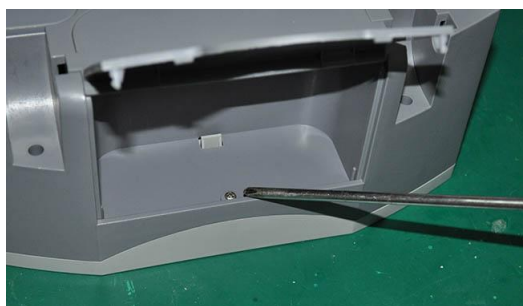
1pc on top of the on/off switch



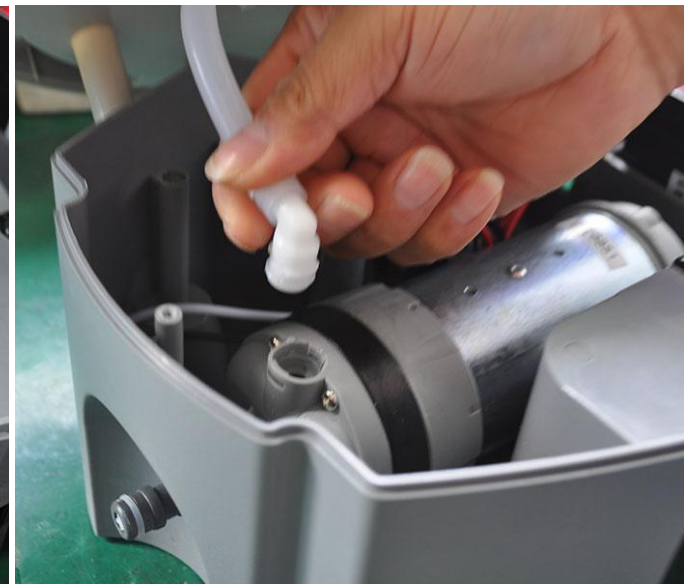
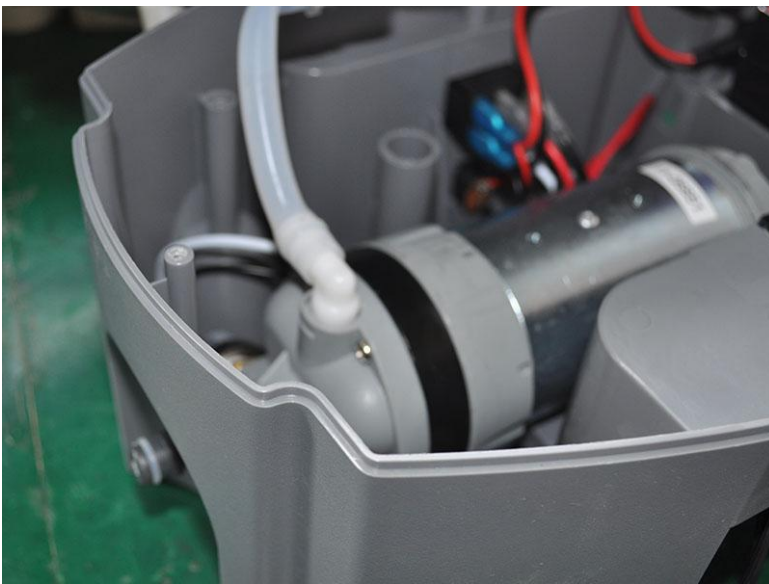
1pc inside each wheel



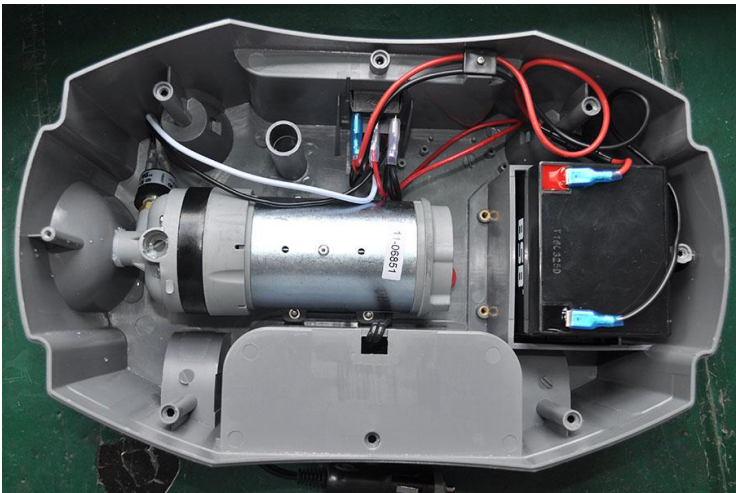
1pc inside the battery housing under the battery cover



1pc inside the housing of 12V cigar lighter power cord



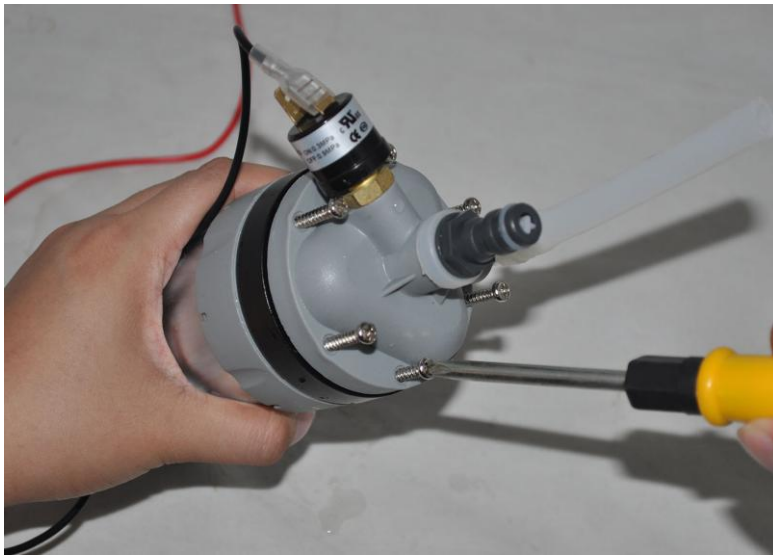
After open the upper cover, twist off the hose which is connected the pump



Unscrew the four screws on the bottom to release the pump from the housing



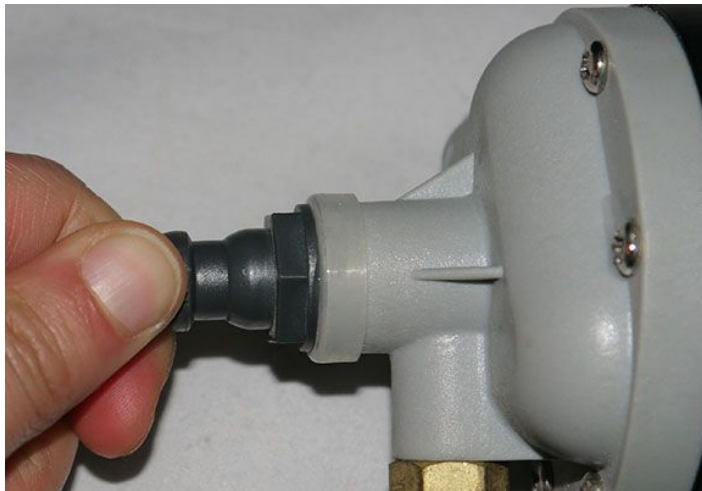
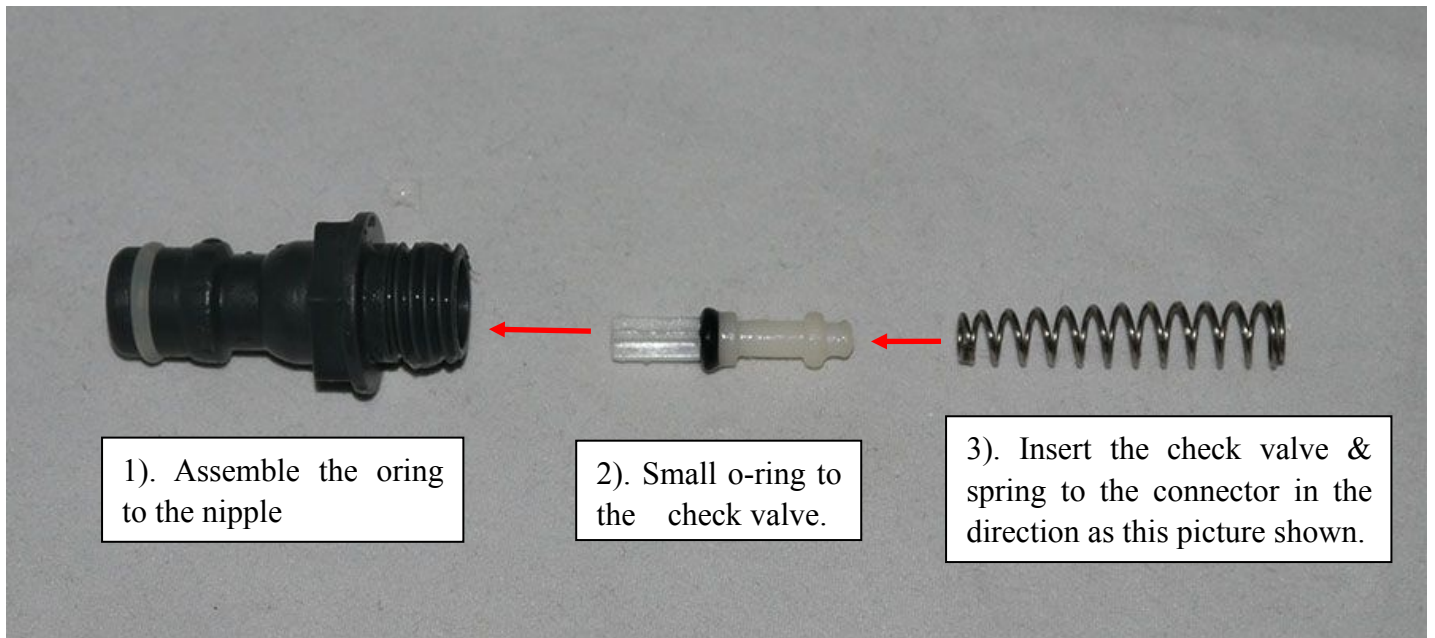
To take out the pump from the housing, disconnect the wire from pressure switch



Unscrew the pump cap, see the diaphragm seal in the middle



Replace the diaphragm seal and then assemble the pump cap back to the pump.



4). Screw the male connector to the female connector on the motor base. If it is not firmly, use a spanner.

