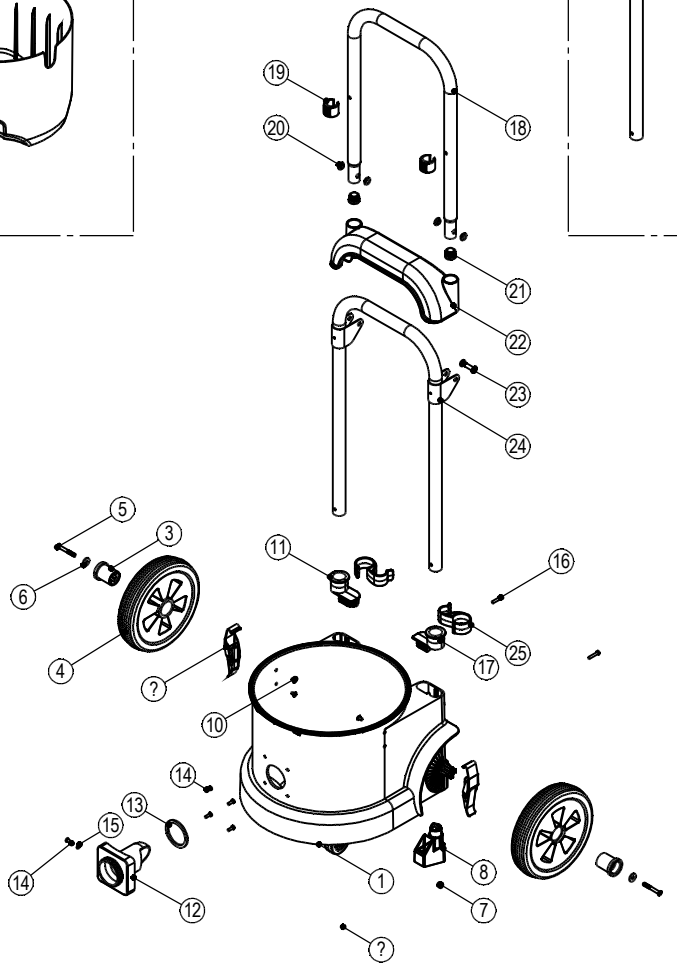
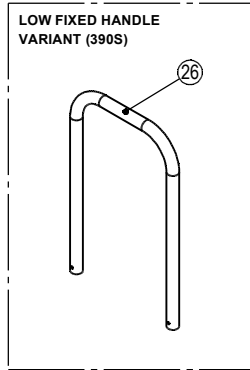
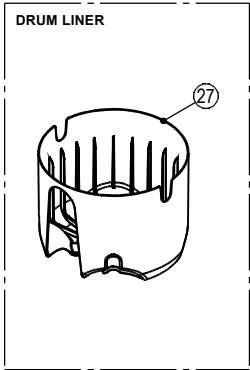


Numatic International Spare Parts

Model No: DRUM STYLE 29 - 390 DRUM (LOW NECK & FOLDING HANDLE / LOW FIXED HANDLE) - EXPLODED DIAGRAM

Internal Code: 907630,908361,908362,908402,908400,907629,912816,909190,908026
 PP DRUMING DRW-27239 ISS:A15

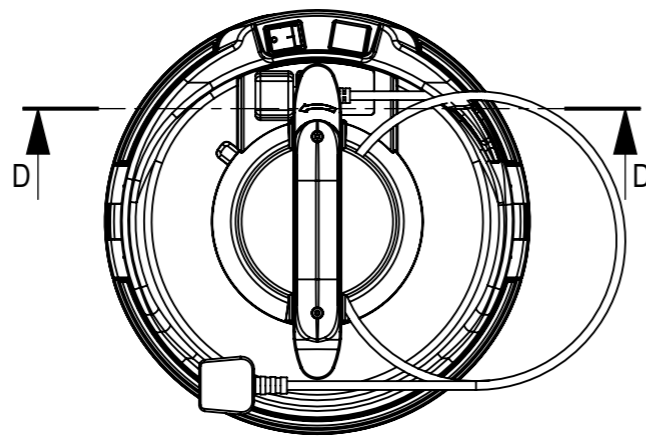
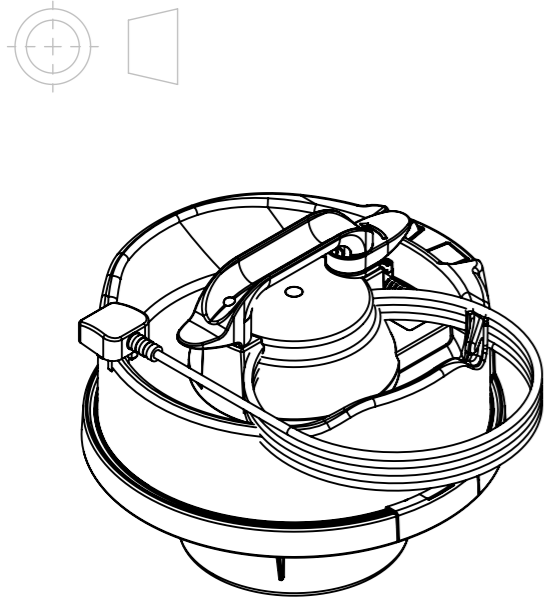


Numatic International Spare Parts

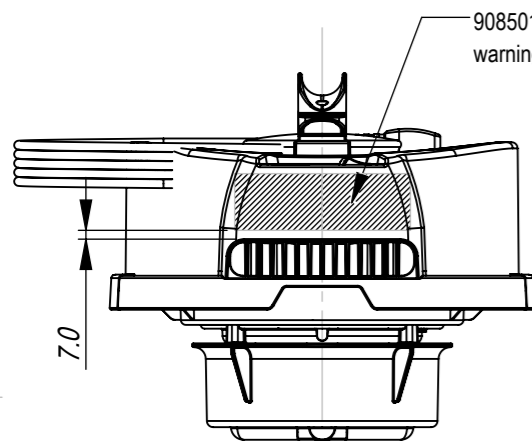
Model No: DRUM STYLE 29 - 390 DRUM (LOW NECK & FOLDING HANDLE / LOW FIXED HANDLE) - EXPLODED DIAGRAM

POS.	ITEM NO.	DESCRIPTION	QTY.
1	907596	390 DRUM (GRAPHITE) - PROCESSED FOR LOW NECK AND SIDE TOGGLES (206022)	1
	907064	390 DRUM (YELLOW) - PROCESSED FOR LOW NECK AND SIDE TOGGLES (206022)	
	908404	390 DRUM (GRAPHITE) - PROCESSED LOW NECK (NO SIDE TOGGLES)	
	912813	390 DRUM (YELLOW) - PROCESSED FOR LOW NECK	
3	-	HUB CAP	2
4	204104	8 INCH WHEEL	2
5	219881	M6 X 45MM SOCKET BUTTON HEAD SCREW	2
6	219008	M6 FORM G WASHER	2
7	219088	M6 NYLON INSERT NUT	2
8	237319	SYMETRIC HUB SUPPORT	2
9	206022	Toggle small claw 30-659 (Chrome)	2
10	219335	AVDEL RIVET	4
11	907489	HANDLE CAVITY PLUG - PART B (RIGHT) - 390 DRUM	1
12	303035	DRILLED DRUM FLANGE	1
13	202027	HOSE FLANGE GASKET	1
14	291152	NO8.1/2 INCH LG.T20.SCREW.Z/PL.PLASTITE	5
15	219003	M5 FORM A STEEL WASHER	1
16	291082	#8 SCREW 1"L T20 PAN HEAD P/L THREAD FORMING	2
17	907584	HANDLE CAVITY PLUG - PART A (LEFT) - 390 DRUM	1
FOLDING HANDLE VARIANT (390L)			
18	907091	FOLDING HANDLE - 390 DRUM - FOLDING UPPER	1
19	206295	PLASTIC SADDLE FOOT	2
20	219417	UNIFIED M/C SCREW INSULATOR	4
21	909771	22MM ROUND RIBBED INSERT (111038)	2
22	907575	FOLDING HANDLE - CROSSBAR (GAS INJECTION) - 390 DRUM	1
23	219802	M6 CONNECTING SCREW	2
24	907600	FOLDING HANDLE - 390 DRUM - FIXED LOWER WITH METAL BRACKETS	1
25	907586	FOLDING HANDLE - SECURING CLIP	2
LOW FIXED HANDLE VARIANT (390S)			
26	907506	FIXED LOW HANDLE - 390 DRUM	1
DRUM LINER			
27	908340	DRUM LINER (COMPATIBLE WITH 370, 380 AND 390 DRUMS)	1
29	204059	2 INCH CASTOR	
30	902038	Toggle small claw 30-659 (Black paint)	

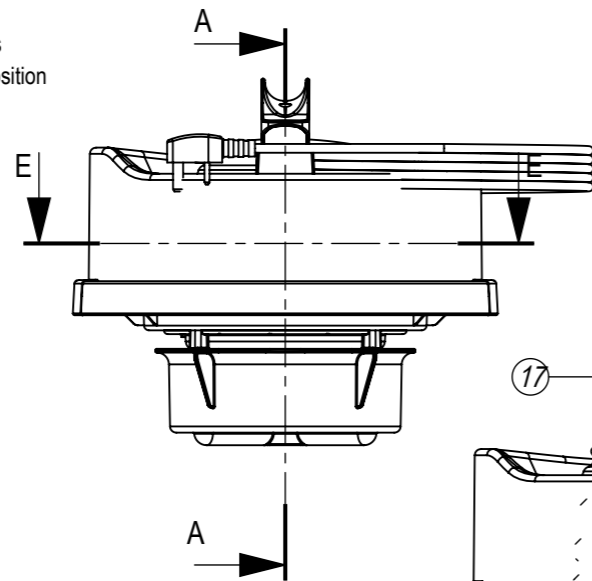
THIRD ANGLE PROJECTION



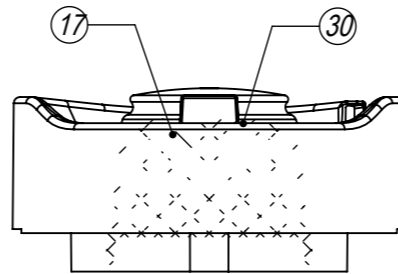
SECTION D-D
SCALE 1 : 6



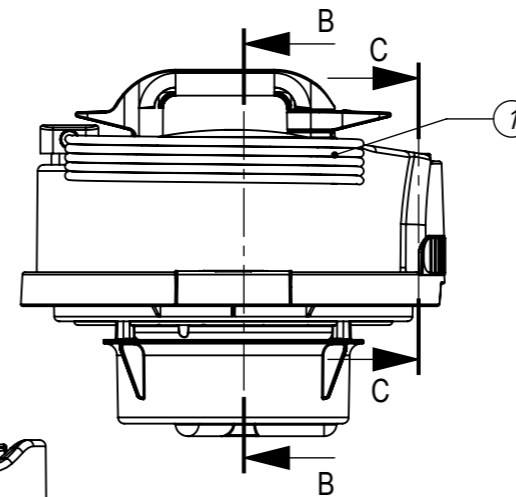
SECTION E-E
SCALE 1 : 6



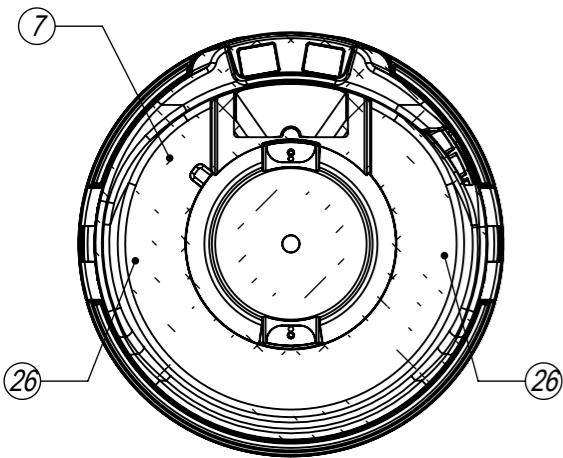
SECTION A-A
SCALE 1 : 6



SECTION C-C
SCALE 1 : 6



SECTION B-B
SCALE 1 : 6



All components must be ROHS compliant.

ITEM NO.	Item_No	DESCRIPTION	QTY.
1	237079	CABLE EXIT NPV/NHV	1
2	237083	TOP MOTOR HOUSING (HEAD STYLE 4) 2 SWITCH - INC. PCB	1
3	237076	SWITCH HOUSING PLUGGED	1
4	229623	SWITCH COVER	1
5	227564	PLUG LOCATION CLAMP	1
6	325912	NPV / NHV TERMINAL BLOCK PLUS INSERTS	1
7	227957	BLANKING PLATE	1
8	206562	CONTACT PIN	2
9	291082	#8 SCREW 1" L T20 PAN HEAD P/L THREAD FORMING	9
10	219107	NO6.5/8 INCH LG.POZI-PAN.SCREW.Z/PL.PLASTITE	2
11	291152	NO8.1/2 INCH LG.T20.SCREW.Z/PL.PLASTITE	1
12	291151	M4 X 10MM LONG T20 SEMS SCREW Z/PL - PRODUCT CODE 8.8 - TX20 HEAD	2
13	205840	230V SINGLE STAGE THRO FLOW FAN MOTOR (DLI 653T) TCO (620)	1
14	229614	MOTOR PLATE BI -MATERIAL	1
15	237480	ADAPTOR MOTOR (DL1 603T)	1
16	237089	BOTTOM MOTOR GASKET - CUP MOTOR	1
17	230253	EVEREL ROCKER SWITCH	1
18	908549	FILTER CARTRIDGE H13 (DRILLED 6mm HOLE)	1
19	237622	Filter Cartridge Housing	1
20	908322	FILTER BRACKET C/W INSERTS	1
21	908879	NRV BOTTOM MOTOR HOUSING	1
22	908502	NEOPRENE SEAL	1
23	291048	M6 x M30 MILD STEEL ZINC PASS WASHER	1
24	219088	M6 NYLON INSERT NUT	1
25	219546	M5 X 20MM LONG POZI PAN SEMS SCREW	2
26	237115	NRV HARD EDGE TOGGLE	2
27	219236	M3 X 10MM LONG SLOT SCREW	1
28	219237	M3 FORM A WASHER	2
29	219070	M3 NYLON INSERT NUT	1
30	237082	BLANKING PLUG - ROCKER SWITCH	1
31	236009	10.0M X 1.00MM X 2 CORE NUCABLE (UK PLUG)	1
32	906071	CABLE MANAGEMENT HANDLE - MAIN BODY	1
33	906072	CABLE MANAGEMENT HANDLE - LOWER HOUSING	1
34	906073	CABLE MANAGEMENT HANDLE - SWIVEL LOCK	1
35	237674	AIRGUIDE (DL1 TYPE)	1
36	901616	WRAP-ACOUSTIC	1

SCREW TORQUE VALUES

- ITEM 12 - NO6 PLASTITE 1 -1.6Nm
- ITEM 11 & 13 - NO8 PLASTITE 2 - 2.6Nm
- ITEM 14 - M4 SEMS SCREW 1 - 1.6Nm
- ITEM 29 - M5 SEMS SCREW 2 - 2.6Nm
- ITEM 28 - M6 NYLON INSERT NUT - 3Nm



Numatic
INTERNATIONAL LTD

MILLFIELD ROAD, CHARD, SOMERSET
TA20 2GB ENGLAND

20.0 THE EXAMPLE SHOWN DETAILS THE METHOD USED FOR IDENTIFYING CRITICAL (INSPECTION) DIMENSIONS WHERE APPLICABLE

TOLERANCES:- LINEAR: 0 DECIMAL PLACES = +/- 1.0mm
1 DECIMAL PLACE = +/- 0.25mm ANGULAR:-
(UNLESS OTHERWISE STATED) 2 DECIMAL PLACES = +/- 0.05mm +/- 0.5 DEGREE

TOOL NUMBER:

WEIGHT:

TITLE:- HEAD STYLE 44 GA

DIMENSIONS IN MILLIMETERS

MATERIAL:-

ITEM No(s):-

A07 'L' CLASS WARNING LABEL POSITION NOTE ADDED

Internal Code: DRAWN: APPD: DATE:

THIS DRAWING IS COPYRIGHT AND IS THE PROPERTY OF NUMATIC INTERNATIONAL LTD. AND MUST NOT BE USED WITHOUT THEIR KNOWLEDGE NOR COMMUNICATED TO ANY PERSON OR COMPANY.

PRINT SIZE

A3

NOT TO SCALE

FINISH:-

DRG No:- DRW-28533