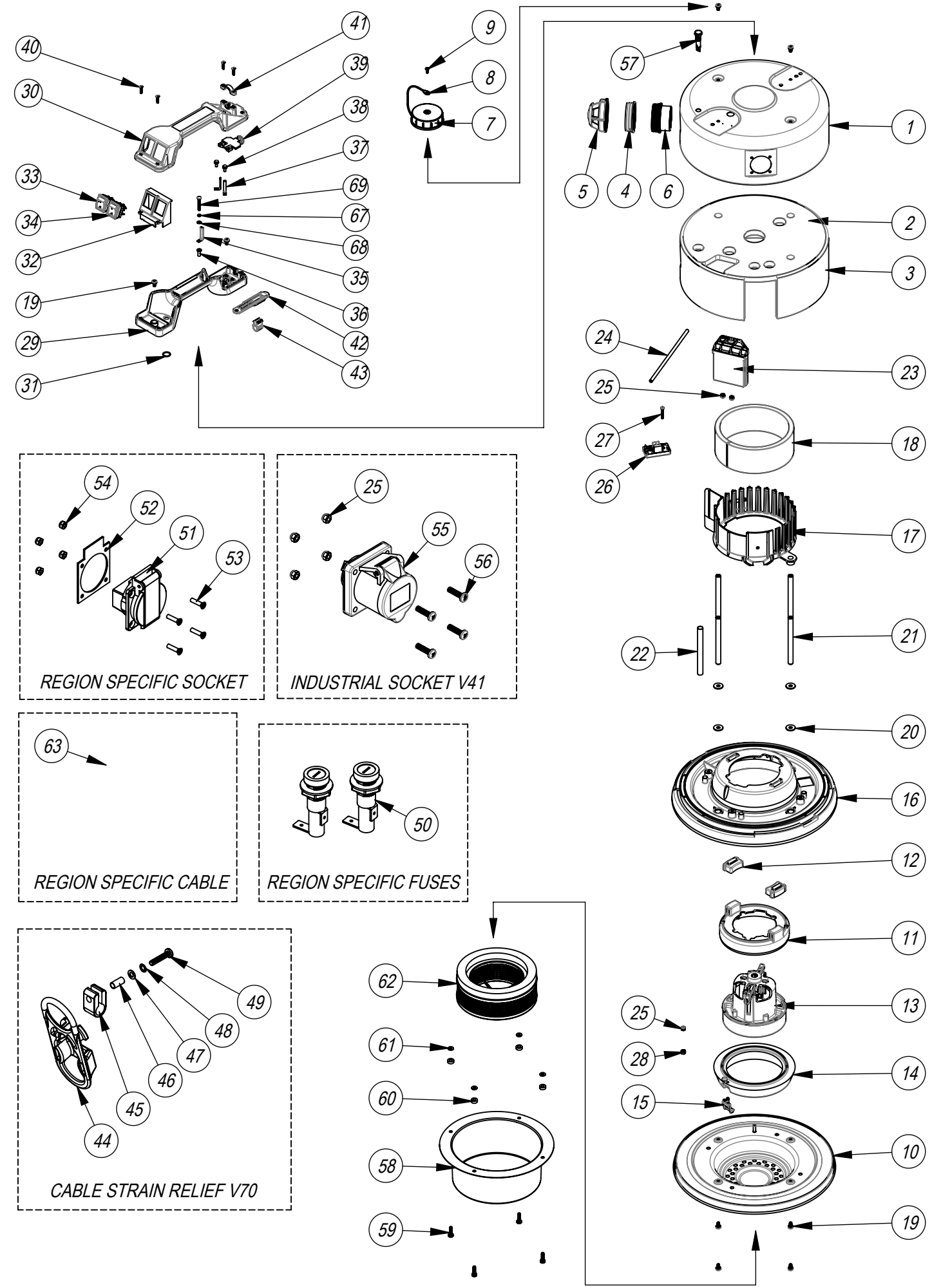


Numatic International Spare Parts

Model No: HEAD STYLE 43 - TRADELINE M-CLASS EXPLODED

NB: FOR WIRING SEE: DRW-27951, DRW-27967, DRW-27971, DRW-27972, DRW-27973.

Internal Code: 907606, 907964, 907968, 907971, 907976, 911683
 PP DRAWING: DRW-27131 ISS:A34 27/03/2020

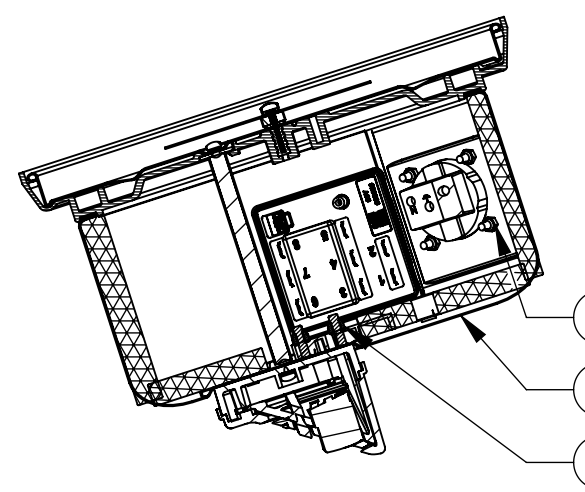
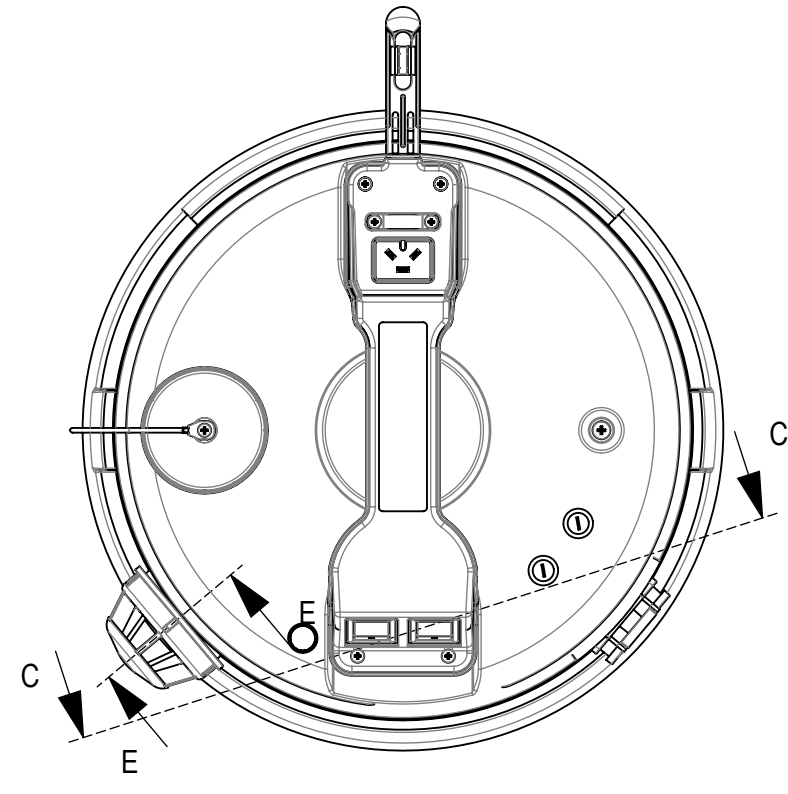
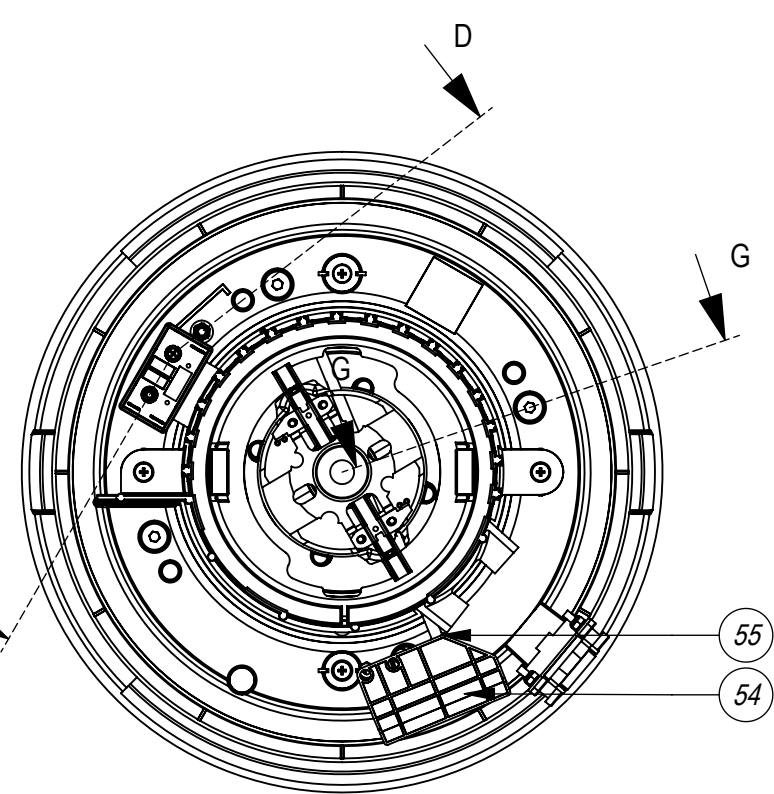


Numatic International Spare Parts

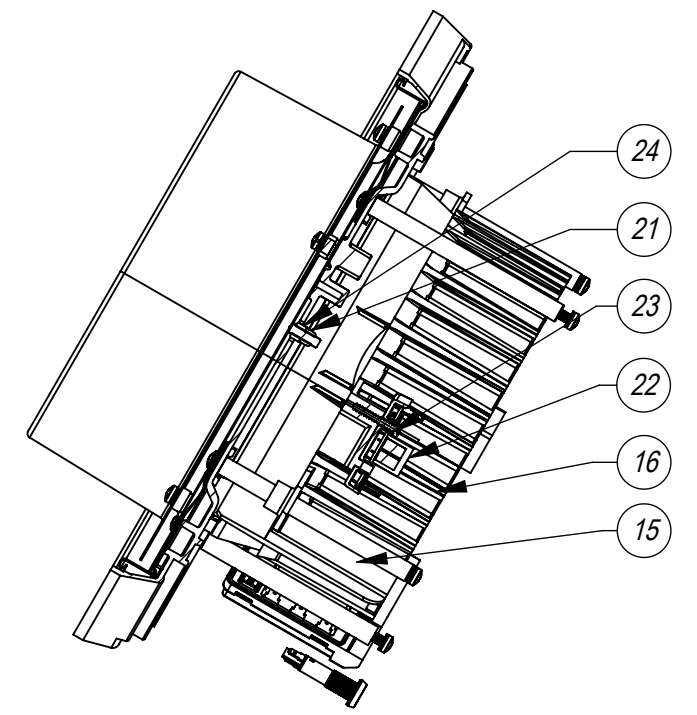
Model No: HEAD STYLE 43 - TRADELINE M-CLASS EXPLODED

| ITEM NO. | PART NUMBER | DESCRIPTION | QTY | COMMENTS: |
|----------|-------------|---|-----|-----------|
| 1 | 907539 | TRADELINE M-CLASS COVER [UK] | 1 | V17 ONLY |
| | 907928 | TRADELINE M-CLASS COVER [EURO] | | V34 ONLY |
| | 907540 | TRADELINE M-CLASS COVER [CSA] | | V70 ONLY |
| | 907538 | TRADELINE M-CLASS COVER [INDUSTRIAL] | | V41 ONLY |
| 2 | 907542 | PUNCHED TOP FELT [TRADELINE] | 1 | |
| 3 | 907543 | PUNCHED SIDE FELT [TRADELINE] | 1 | |
| 4 | 206001 | METAL HOSE CONNECTOR | 1 | |
| 5 | 604151 | AIR DIFFUSER FOR BLOWER TYPES (NQS) | 1 | |
| 6 | 206005 | AIR OUTLET NECK | 1 | |
| 7 | 206363 | BLANKING CAP | 1 | |
| 8 | 303037 | BLANKING CAP FIXING WIRE | 1 | |
| 9 | 219301 | No6 X 3/8 INCH LONG POZI PAN SELF TAP SCREW | 1 | |
| 10 | 907664 | TRADELINE M-CLASS BMH | 1 | |
| 11 | 229514 | MOTOR SPACER (CUP MOTOR) | 1 | |
| 12 | 227885 | NVQ MOUNTING RUBBER (AMETEK MOTOR) | 2 | |
| 13 | 205840 | 230V SINGLE STAGE THRO FLOW FAN MOTOR (DLI 653T) TCO (620) | 1 | V17/V34 |
| | 205291 | 120V SINGLE STAGE THRO FLOW FAN MOTOR (DL1651T) TCO (620) | | V41/V70 |
| 14 | 907588 | MOTOR GASKET (1 STAGE WITH AIR BLEED HOLE) | 1 | |
| 15 | 907587 | LOW FLOW PRESSURE TAP (1 & 2 STAGE MOTOR) (OPEN TUBE HOLE) | 1 | |
| 16 | 907873 | TRADELINE M-CLASS TMH | 1 | |
| 17 | 907601 | NOISE REDUCTION POD NOTCHED [TRADELINE] | 1 | |
| 18 | 203020 | NVQ/NQS POD SIDE FELT (LAMB MOTOR) | 1 | |
| 19 | 219047 | M5 X 10MM LONG POZI PAN SEMS SCREW | 8 | |
| 20 | 219876 | 1/4 X 3/4 X 16G PLAIN WASHER TABLE 5 ZINC PLATED | 4 | |
| 21 | 208003 | 115MM LONG ALUMINIUM SPACER | 4 | |
| 22 | 908961 | 10MM I/D X 0.5MM X 115MM WALL BLACK PVC SLEEVING | 1 | |
| 23 | 907642 | PCB ASSEMBLY.AUTOSTART.LOWFLOW.230V | 1 | V17/V34 |
| | 907711 | PCB ASSEMBLY.AUTOSTART.LOWFLOW.115V | | V41/V70 |
| 24 | 907877 | LOW FLOW TUBE | 1 | |
| 25 | 219076 | M5 NYLON INSERT NUT | 3 | EXC. V41 |
| | | | 7 | V41 ONLY |
| 26 | 907644 | PCB ASSEMBLY.SUPPRESSOR.220NF.10NF | 1 | |
| 27 | 219602 | No6 X 1 INCH LONG POZI PAN PLASTITE SCREW (Z/PL) | 1 | |
| 28 | 219072 | M5 FULL NUT | 1 | |
| 29 | 904996 | HANDLE BASE 2 INSERTS | 1 | EXC. V70 |
| | 904998 | HANDLE BASE 2 INSERTS (FR) | | V70 ONLY |
| 30 | 904830 | HANDLE COVER 2-SWITCH 3 POLE 16A | 1 | EXC. V70 |
| | 904831 | HANDLE COVER 2-SWITCH 3 POLE 16A (FR) | | V70 ONLY |
| 31 | 219363 | O-RING | 1 | |
| 32 | 227629 | SWITCH MOUNTING BRACKET | 1 | |
| 33 | 220552 | RED ROCKER SWITCH (WHITE PRINT) | 1 | |
| 34 | 220582 | GREEN ROCKER SWITCH C1350VTAAG C/W WHITE MARKINGS (0-1) | 1 | |
| 35 | 206563 | EARTH CONTACT PIN | 1 | |
| 36 | 220078 | BRASS EARTHING SPACER | 1 | |
| 37 | 206562 | CONTACT PIN | 2 | |
| 38 | 291151 | M4 X 10MM LONG T20 SEMS SCREW Z/PL - PRODUCT CODE 8.8 - TX20 HEAD | 2 | |
| 39 | 227631 | TERMINAL COVER & CLAMP (3 PIN) | 1 | |
| 40 | 219107 | NO6.5/8 INCH LG.POZI-PAN.SCREW.Z/PL.PLASTITE | 6 | |
| 41 | 216290 | CABLE CLAMP 16A PLUGGED | 1 | |
| 42 | 227636 | STRAIN RELIEF ARM (SOCKET) | 1 | EXC. V70 |
| 43 | 227637 | CABLE CLIP | 1 | EXC. V70 |
| 44 | 902312 | CABLE STRESS RELIEF | 1 | V70 ONLY |
| 45 | 219743 | CABLE CLEAT | 1 | V70 ONLY |
| 46 | 903192 | SPIROL SPACER SP100 5MM NOM ID x 14MM | 1 | V70 ONLY |
| 47 | 219355 | M5 FORM A STAINLESS STEEL WASHER | 1 | V70 ONLY |
| 48 | 291084 | M5 SHAKEPROOF WASHER STAINLESS STEEL | 1 | V70 ONLY |
| 49 | 219575 | M5 X 25MM LONG POZI PAN STAINLESS STEEL SCREW | 1 | V70 ONLY |
| 50 | 221420 | FUSE HOLDER ASSEMBLY (REF HTB-38M) | N/A | V17 ONLY |
| | | | 1 | V41 ONLY |
| 51 | 230161 | UK SOCKET (BS 13630 13A 250V UK) | 1 | V17 ONLY |
| | 230162 | EURO SOCKET (ROUND) (A1461000 EUROPE) | | V34 ONLY |
| | 230173 | EURO SOCKET + EARTH PIN (A1461002 FRENCH/BELGIUM EARTH SYSTEM) | | V34 ONLY |
| | 230163 | USA SOCKET (AUL 12500 USA) | | V70 ONLY |
| 52 | 230166 | SOCKET GASKET | 1 | EXC. V41 |
| 53 | 219407 | M4 X 16MM LONG POZI PAN COUNTERSUNK SCREW | 4 | EXC. V41 |
| 54 | 219083 | M4 NYLON INSERT NUT | 4 | EXC. V41 |
| 55 | 220765 | 100-130V / 16A INDUSTRIAL SOCKET | 1 | V41 ONLY |
| 56 | 219054 | M5 X 20MM LONG POZI PAN SCREW | 4 | V41 ONLY |
| 57 | 904787 | AMBER 24V LED IP67 - REF. H02750S BULGIN - ARCOLECTRIC | 1 | |
| 58 | 401005 | MF 300/350 SPUN CUP PAINT BLACK | 1 | |
| 59 | 219546 | M5 X 20MM LONG POZI PAN SEMS SCREW | 4 | |
| 60 | 227165 | 4.67MM LONG SPACER | 4 | |
| 61 | 219462 | RUBBER WASHER REF NO. 0380810 | 4 | |
| 62 | 901649 | H13 FILTER CARTRIDGE (MF) | 1 | |
| 63 | 236011 | 10.0M X 1.50MM X 3 CORE NUCABLE (UK PLUG) | 1 | V17 ONLY |
| | 236015 | 10.0MT X 1.5MM X 3 CORE CABLE (SOCKET + PLUG) EURO | | V34 ONLY |
| | 236027 | 10.0MT X 14AWG X 3 CORE YELLOW CABLE (SOCKET + PLUG) CSA | | V70 ONLY |
| | 907544 | MAINS CABLE 10.0 METRE LONG X 1.5MM X 3 CORE CABLE (SOCKET + 16 AMP / 110V INDUSTRIAL PLUG) | | V41 ONLY |
| 67 | 219021 | M4 SINGLE COIL WASHER | | |
| 68 | 219206 | M4 FORM A WASHER | | |

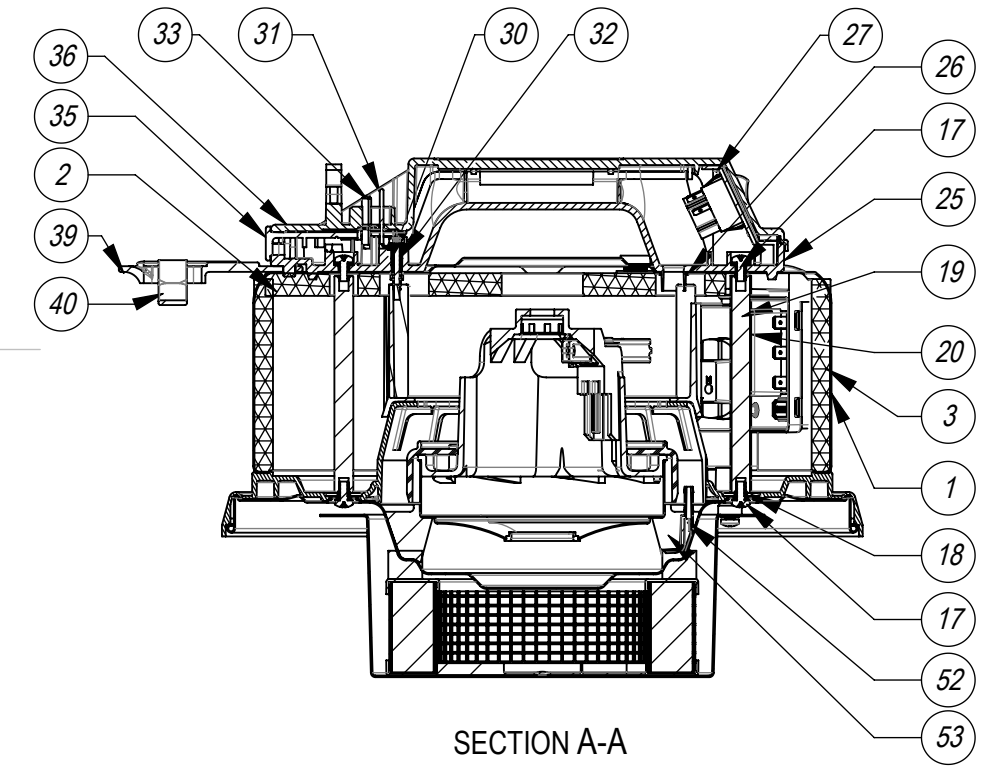
THIRD ANGLE PROJECTION



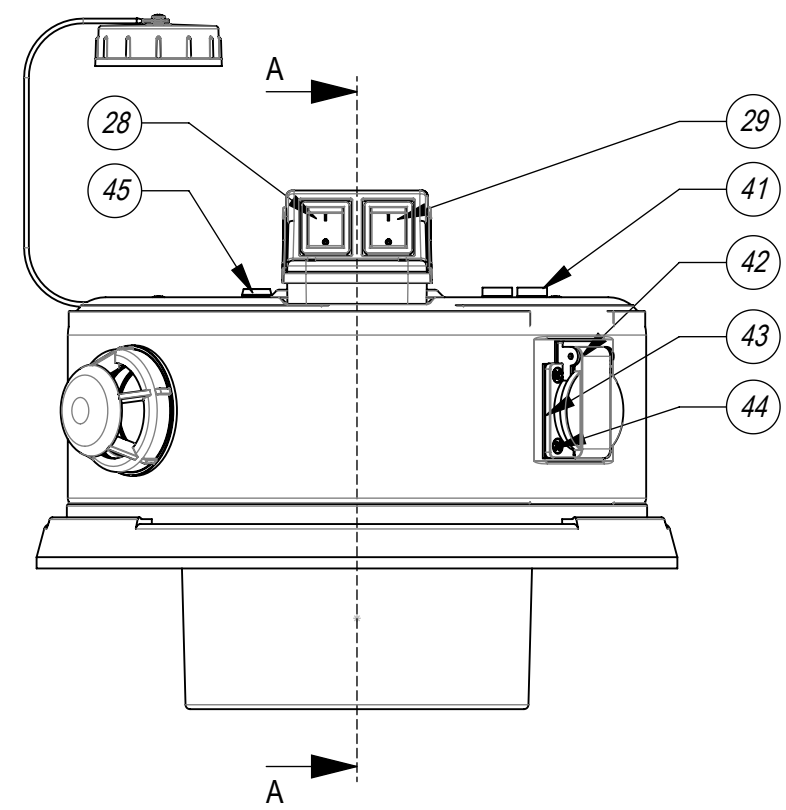
AUTO START PCB MOUNTING SECTION C-C



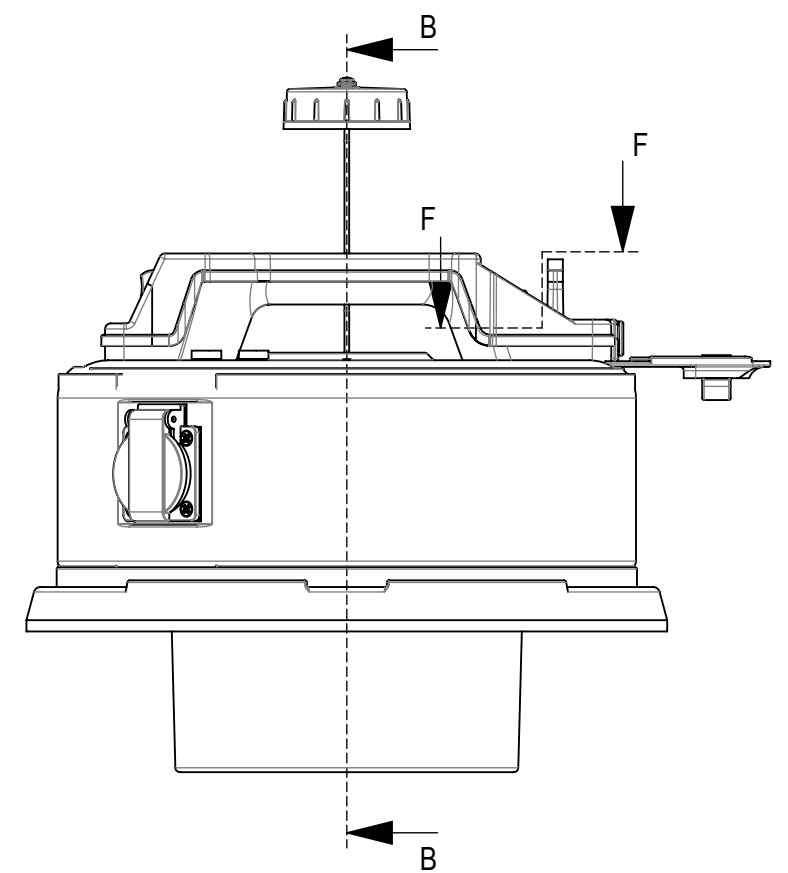
EMC PCB SECTION D-D



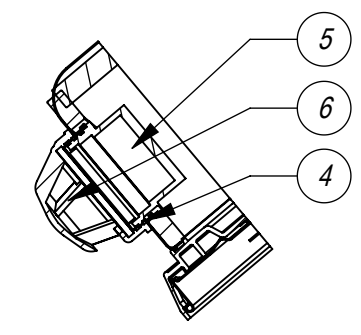
SECTION A-A



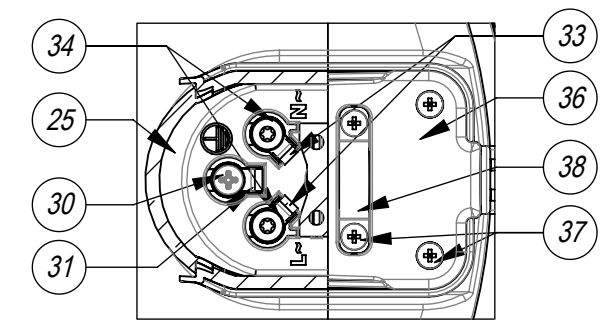
BLOWER EXHAUST SECTION E-E



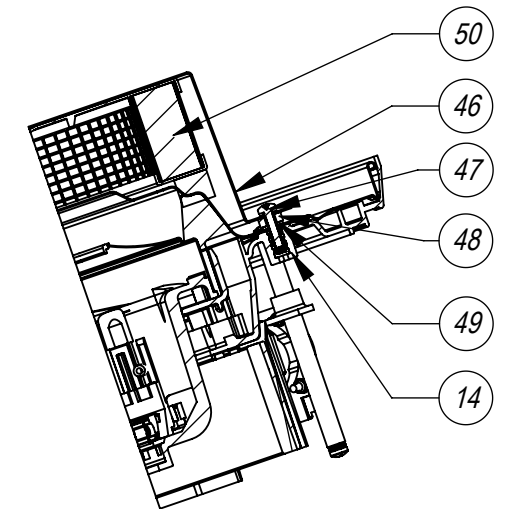
PLUGGED HANDLE SECTION F-F SCALE 1:2



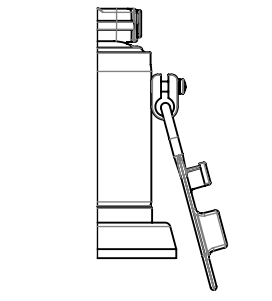
BLOWER EXHAUST SECTION E-E



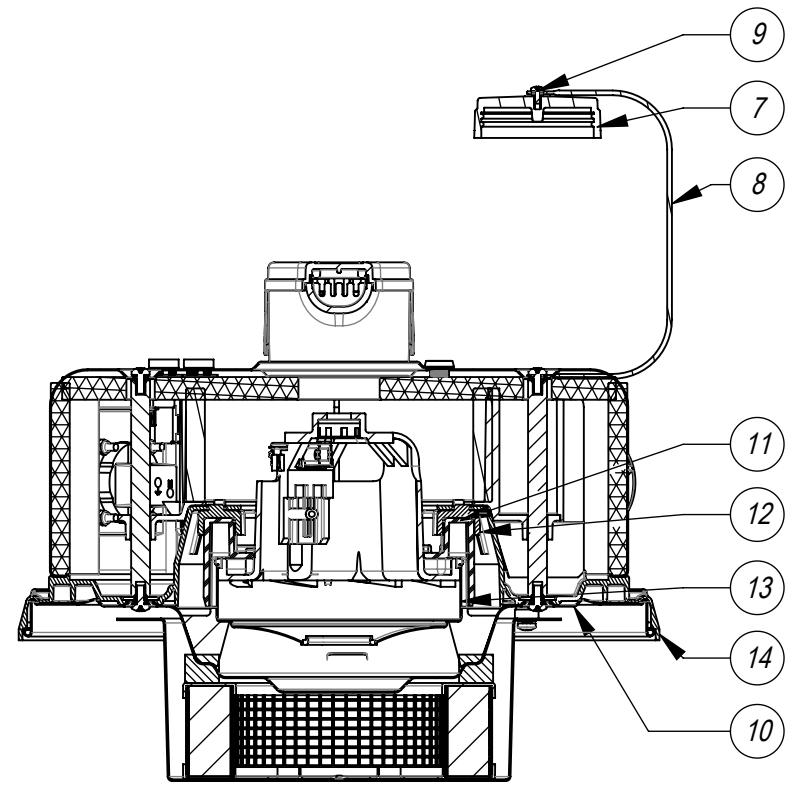
PLUGGED HANDLE SECTION F-F SCALE 1:2



FILTER MOUNTING SECTION G-G



V70 CABLE CLAMP REFERENCE ONLY



SECTION B-B

| ITEM NO. | DESCRIPTION | QTY | COMMENTS: |
|----------|---|-----|-----------------|
| 1 | TRADELINE M-CLASS COVER | 1 | |
| 2 | PUNCHED TOP FELT [TRADELINE] | 1 | |
| 3 | PUNCHED SIDE FELT [TRADELINE] | 1 | |
| 4 | METAL HOSE CONNECTOR | 1 | |
| 5 | AIR OUTLET NECK | 1 | |
| 6 | AIR DIFFUSER FOR BLOWER TYPES (NQS) | 1 | |
| 7 | BLANKING CAP | 1 | |
| 8 | BLANKING CAP FIXING WIRE | 1 | |
| 9 | No6 X 3/8 INCH LONG POZI PAN SELF TAP SCREW | 1 | TORQUE TO 1.6NM |
| 10 | TRADELINE M-CLASS BMH | 1 | |
| 11 | MOTOR SPACER (CUP MOTOR) | 1 | |
| 12 | MOUNTING RUBBER | 2 | |
| 13 | SINGLE STAGE THRO FLOW FAN MOTOR | 1 | REGION SPECIFIC |
| 14 | TRADELINE M-CLASS TMH | 1 | |
| 15 | NOISE REDUCTION POD NOTCHED [TRADELINE] | 1 | |
| 16 | POD SIDE FELT | 1 | |
| 17 | M5 X 10MM LONG POZI PAN SEMS SCREW | 8 | TORQUE TO 2.6NM |
| 18 | 1/4 X 3/4 X 16G PLAIN WASHER TABLE 5 ZINC PLATED | 4 | |
| 19 | 115MM LONG ALUMINIUM SPACER | 4 | |
| 20 | 10MM I/D X 0.5MM X 115MM WALL BLACK PVC SLEEVING | 1 | |
| 21 | M5 NYLON INSERT NUT | 3 | TORQUE TO 1.0NM |
| 22 | PCB ASSEMBLY.SUPPRESSOR.220NF.10NF | 1 | |
| 23 | No6 X 1 INCH LONG POZI PAN PLASTITE SCREW (Z/PL) | 1 | TORQUE TO 1.6NM |
| 24 | M5 FULL NUT | 1 | TORQUE TO 1.0NM |
| 25 | HANDLE BASE 2 INSERTS | 1 | |
| 26 | O-RING | 1 | |
| 27 | SWITCH MOUNTING BRACKET | 1 | |
| 28 | RED ROCKER SWITCH (WHITE PRINT) | 1 | |
| 29 | GREEN ROCKER SWITCH (WHITE PRINT) 0-1 | 1 | |
| 30 | M4 X 25MM LG 'STETS' SCREW | 1 | TORQUE TO 1.6NM |
| 31 | EARTH CONTACT PIN | 1 | |
| 32 | BRASS EARTHING SPACER | 1 | |
| 33 | CONTACT PIN | 2 | |
| 34 | M4 X 10MM LONG T20 SEMS SCREW Z/PL - PRODUCT CODE 8.8 - TX20 HEAD | 2 | TORQUE TO 1.6NM |
| 35 | TERMINAL COVER & CLAMP (3 PIN) | 1 | |
| 36 | HANDLE COVER 2-SWITCH 3 POLE 16A | 1 | |
| 37 | NO6.5/8 INCH LG.POZI-PAN.SCREW Z/PL.PLASTITE | 6 | TORQUE TO 1.6NM |
| 38 | CABLE CLAMP | 1 | |
| 39 | STRAIN RELIEF | 1 | |
| 40 | CABLE CLIP | 1 | |
| 41 | FUSE HOLDER | 1 | REGION SPECIFIC |
| 42 | AUX SOCKET | 1 | |
| 43 | SOCKET GASKET | 1 | |
| 44 | SOCKET SCREW | 4 | TORQUE TO 1.6NM |
| 45 | AMBER 24V LED IP67 - REF. H02750S BULGIN - ARCOLECTRIC | 1 | |
| 46 | SPUN CUP BLACK | 1 | |
| 47 | M5 X 20MM LONG POZI PAN SEMS SCREW | 4 | |
| 48 | 4.67MM LONG SPACER | 4 | |
| 49 | RUBBER WASHER | 4 | |
| 50 | H13 FILTER CARTRIDGE (MF) | 1 | |
| 52 | LOW FLOW PRESSURE TAP (1 & 2 STAGE MOTOR) (OPEN TUBE HOLE) | 1 | |
| 53 | MOTOR GASKET (1 STAGE WITH AIR BLEED HOLE) | 1 | |
| 54 | PCB-1437 [TRADELINE M-CLASS.230V] | 1 | |
| 55 | LOW FLOW TUBE | 1 | |
| 56 | M4 NYLON INSERT NUT | 4 | |

Safety critical component must have European and North American safety mark.
 Any Component that will be touched by the operator must be PAH tested.
 All components must be ROHS compliant.

Sheet1

TOOL NUMBER:

WEIGHT:

Numatic INTERNATIONAL LTD
 MILLFIELD ROAD, CHARD, SOMERSET TA20 2GB ENGLAND

THE EXAMPLE SHOWN DETAILS THE METHOD USED FOR IDENTIFYING CRITICAL (INSPECTION) DIMENSIONS WHERE APPLICABLE

TOLERANCES:-
 (UNLESS OTHERWISE STATED)

LINEAR: 0 DECIMAL PLACE = +/- 1.0mm
 1 DECIMAL PLACE = +/- 0.25mm
 2 DECIMAL PLACES = +/- 0.05mm

ANGULAR:-
 +/- 0.5 DEGREE

TITLE:- HEAD STYLE 43 - TRADELINE M-CLASS HEAD GA

MATERIAL:- See Table: **FINISH:-** N/A

ITEM No(s):- 907606, 907964, 907968, 907971, 907976

DRG No:- DRW-27826

A10 REVISION: CHANGE DETAIL: UPDATE TO REMOVE ALL 907885 BOARDS AND UPDATE M-CLASS ASSEMBLIES WITH THE NEW LOW FLOW BOARD

PP Lewis Manuel - Internal Code: DRAWN: APPD: DATE:

THIS DRAWING IS COPYRIGHT AND IS THE PROPERTY OF NUMATIC INTERNATIONAL LTD. AND MUST NOT BE USED WITHOUT THEIR KNOWLEDGE NOR COMMUNICATED TO ANY PERSON OR COMPANY.

PRINT SIZE A2 NOT TO SCALE