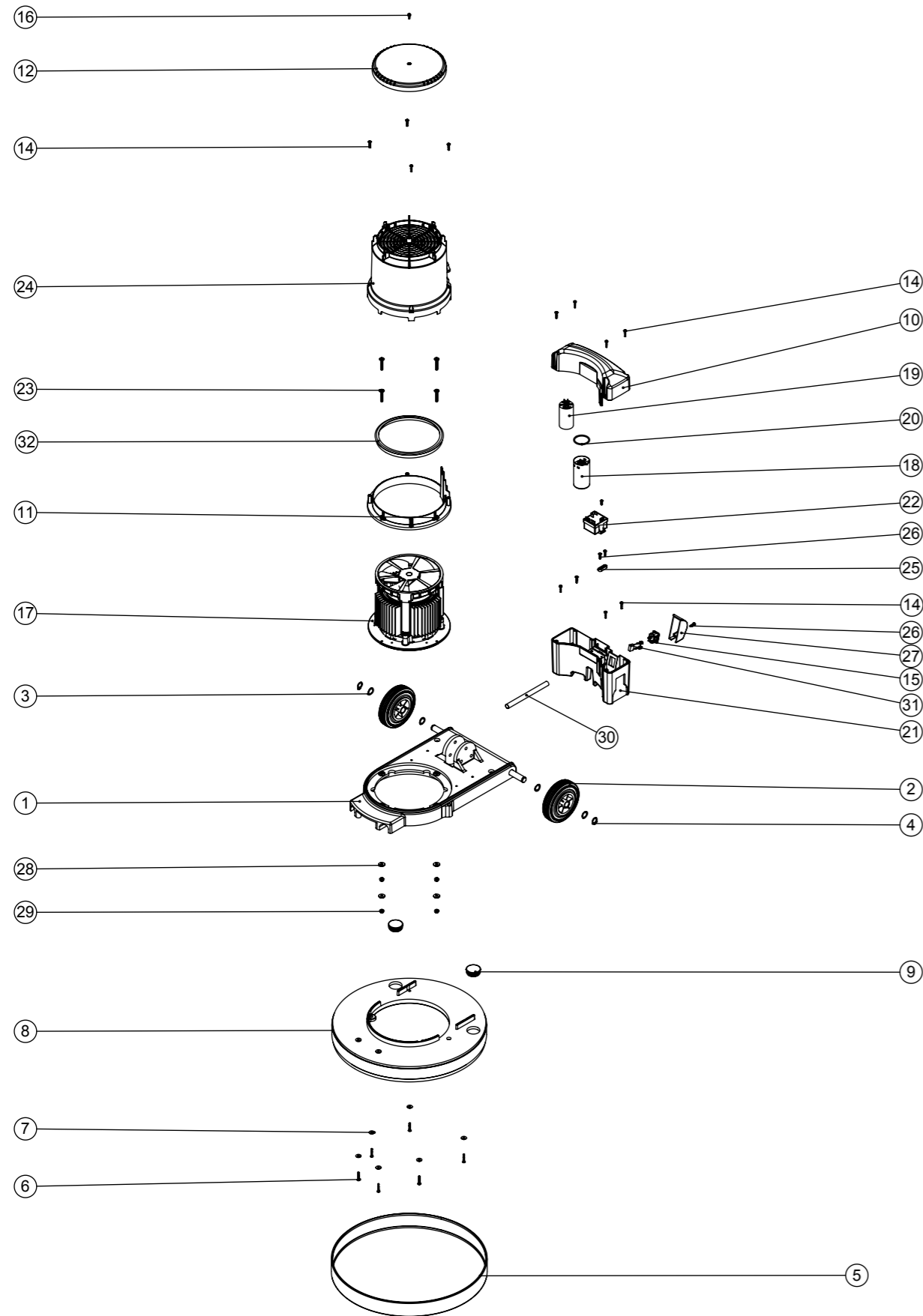


Numatic International Spare Parts

Model No: HFM 1515/1523/1530/1545 EXPLODED DRAWING ASSEMBLY

234894
DRAWING: DRW-12020 ISS:A01
27/09/2012

NB: FOR WIRING SEE DRAWING: DRW-11701



Numatic International Spare Parts

Model No: HFM 1515/1523/1530/1545 EXPLODED DRAWING ASSEMBLY

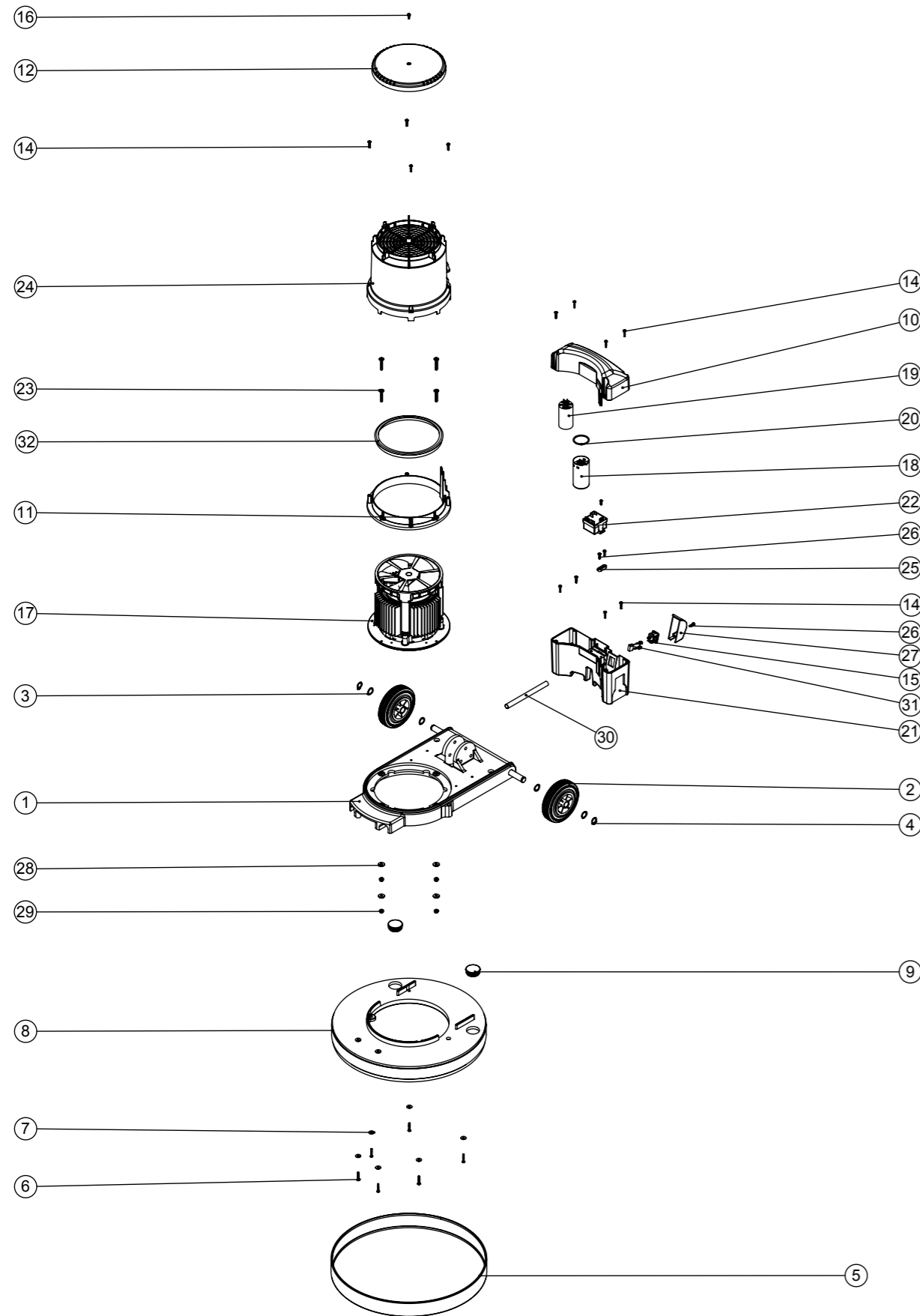
ITEM NO.	PART NO.	DESCRIPTION	QTY.
1	304260	MULTIDECK BASE MOULDING SUB ASSY	1
2	229060	WHEEL GREY BLACK HUB	2
3	219219	21.5MM X 16.3MM WAVE WASHER	4
4	229051	EXTERNAL CIRCLIP	2
5	206466	LIGHT GREY MEDIUM BUFFER RING (RAL 7042)	1
6	219369	No8 X 1 INCH LONG POZI PAN STAINLESS STEEL PLASTITE SCREW	6
7	219644	M5 FORM G STAINLESS STEEL WASHER	6
8	330010	DECK FOR DUSTROL Y SYSTEM	1
9	229400	BLACK END STOP	2
10	237505	HFM CAPACITOR BOX TOP MOULDING	1
11	237500	BOTTOM SECTION MOULDING	1
12	237503	LID MOULDING (HFM)	1
13	219318	No6 X 1/2 INCH LONG POZI PAN PLASTITE SCREW	1
14	219568	No8 X 3/4 INCH LONG POZI PAN STAINLESS STEEL SCREW	12
15	220584	RENDAR CLIP IN PLUG	1
16	219471	M4 X 12MM LONG POZI PAN SEMS SCREW	1
17	205202	INDUCTION MOTOR 4-POLE 1500W 220-240V 50Hz	1
18	205088	MOTOR START CAPACITOR 150MFD 280V C/W RESISTOR AND M8 STUD	1
19	220897	MOTOR RUN CAPACITOR 25 MFD 450V	1
20	208535	O RING 39.5MM ID x 3 DIA	1
21	330081	HFM CAPACITOR BOX BOTTOM MOULDING C/W INSERT	1
22	206823	230V SINGLE SPEED VOLTAGE RELAY	1
23	219643	M6 X 35MM LONG STAINLESS STEEL POZI PAN SCREW	4
24	330082	HFM MID SECTION MOULDING PRINTED (1500W)	1
25	227008	BLACK CABLE CLAMP	1
26	219914	NO6 X 5/8 INCH LONG POZI-PAN PLASTITE STAINLESS STEEL SCREW	3
27	229213	PLUG COVER	1
28	219647	M6 FORM G STAINLESS STEEL WASHER	4
29	219642	M6 STAINLESS STEEL NYLON INSERT NUT	4
30	330086	MOTOR WIRE SLEEVE	1
31	230136	SUPPRESSOR ASSEMBLY	1
32	237412	HFM TOP MOTOR GASKET	1

Numatic International Spare Parts

Model No: HFM 1515/1523/1530/1545 EXPLODED DRAWING ASSEMBLY

234894
DRAWING: DRW-12020 ISS:A04
27/09/2012

NB: FOR WIRING SEE DRAWING: DRW-11701



Numatic International Spare Parts

Model No: HFM 1515/1523/1530/1545 EXPLODED DRAWING ASSEMBLY

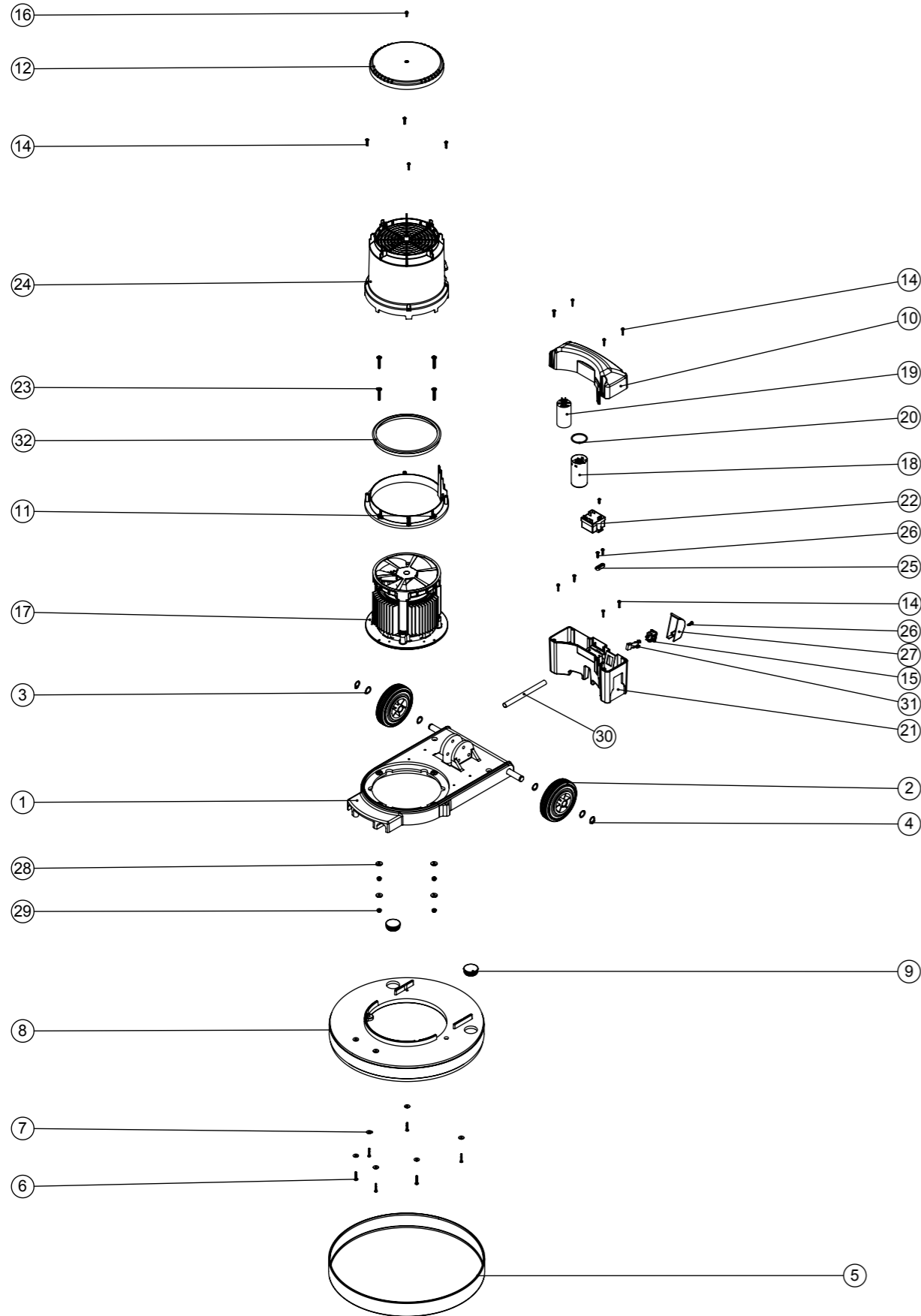
ITEM NO.	PART NO.	DESCRIPTION	QTY.
1	304260	MULTIDECK BASE MOULDING SUB ASSY	1
2	229060	WHEEL GREY BLACK HUB	2
3	219219	21.5MM X 16.3MM WAVE WASHER	4
4	229051	EXTERNAL CIRCLIP	2
5	206466	LIGHT GREY MEDIUM BUFFER RING (RAL 7042)	1
6	219369	No8 X 1 INCH LONG POZI PAN STAINLESS STEEL PLASTITE SCREW	6
7	219644	M5 FORM G STAINLESS STEEL WASHER	6
8	330010	DECK FOR DUSTROL Y SYSTEM	1
9	229400	BLACK END STOP	2
10	237505	HFM CAPACITOR BOX TOP MOULDING	1
11	237500	BOTTOM SECTION MOULDING	1
12	237503	LID MOULDING (HFM)	1
13	219318	No6 X 1/2 INCH LONG POZI PAN PLASTITE SCREW (Z/PL)	1
14	219568	NO8.3/4 INCH LG.POZI-PAN.SCREW.STAINLESS STEEL.PLASTITE	12
15	220584	RENDAR CLIP IN PLUG	1
16	219471	M4 X 12MM LONG POZI PAN SEMS SCREW	1
17	205202	INDUCTION MOTOR 4-POLE 1500W 220-240V 50Hz	1
18	205088	MOTOR START CAPACITOR 150MFD 280V C/W RESISTOR AND M8 STUD	1
19	220897	MOTOR RUN CAPACITOR 25 MFD 450V	1
20	208534	O RING 39.5MM ID x 3 DIA	1
21	330081	HFM CAPACITOR BOX BOTTOM MOULDING C/W INSERT	1
22	902715	SINGLE SPEED RELAY 230V, RVA6N0D	1
23	219643	M6 X 35MM LONG STAINLESS STEEL POZI PAN SCREW	4
24	330082	HFM MID SECTION MOULDING PRINTED (1500W)	1
25	227008	BLACK CABLE CLAMP	1
26	219914	NO6 X 5/8 INCH LONG POZI-PAN PLASTITE STAINLESS STEEL SCREW	3
27	229213	PLUG COVER	1
28	219647	M6 FORM G STAINLESS STEEL WASHER	4
29	219642	M6 STAINLESS STEEL NYLON INSERT NUT	4
30	330086	MOTOR WIRE SLEEVE	1
31	230136	SUPPRESSOR ASSEMBLY	1
32	237412	HFM TOP MOTOR GASKET	1

Numatic International Spare Parts

Model No: HFM 1515/1523/1530/1545 EXPLODED DRAWING ASSEMBLY

234894
DRAWING: DRW-12020 ISS:A08
12/07/2017

NB: FOR WIRING SEE DRAWING: DRW-11701



Numatic International Spare Parts

Model No: HFM 1515/1523/1530/1545 EXPLODED DRAWING ASSEMBLY

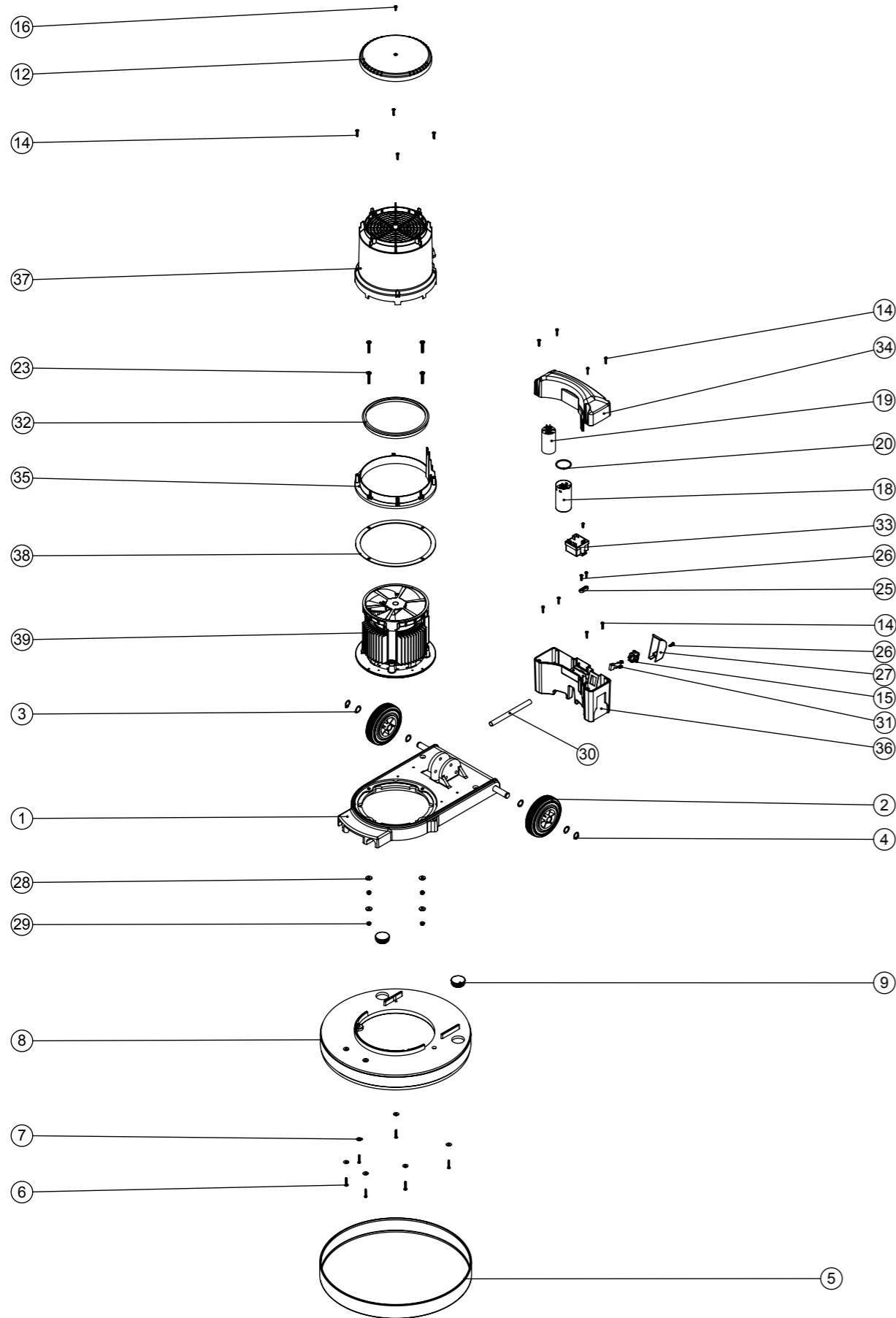
ITEM NO.	PART NO.	DESCRIPTION	Comments	QTY.
1	304260	MULTIDECK BASE MOULDING SUB ASSY		1
2	229060	WHEEL GREY BLACK HUB		2
3	219219	21.5MM X 16.3MM WAVE WASHER		4
4	229051	EXTERNAL CIRCLIP		2
5	206466	LIGHT GREY MEDIUM BUFFER RING (RAL 7042)	G - RANGE USE 206478	1
6	219369	No8 X 1 INCH LONG POZI PAN STAINLESS STEEL PLASTITE SCREW		6
7	219644	M5 FORM G STAINLESS STEEL WASHER		6
8	330010	DECK FOR DUSTROL Y SYSTEM	G - RANGE USE 329072	1
9	229400	BLACK END STOP		2
10	237505	HFM CAPACITOR BOX TOP MOULDING (BLUE)	G - RANGE USE 905782	1
11	237500	BOTTOM SECTION MOULDING (BLUE)	G - RANGE USE 905781	1
12	237503	LID MOULDING (HFM)		1
13	219318	No6 X 1/2 INCH LONG POZI PAN PLASTITE SCREW (Z/PL)		1
14	219568	NO8.3/4 INCH LG.POZI-PAN.SCREW.STAINLESS STEEL.PLASTITE		12
15	220584	RENDAR CLIP IN PLUG		1
16	219471	M4 X 12MM LONG POZI PAN SEMS SCREW		1
17	205202	INDUCTION MOTOR 4-POLE 1500W 220-240V 50Hz		1
18	205088	MOTOR START CAPACITOR 150MFD 280V C/W RESISTOR AND M8 STUD		1
19	220897	MOTOR RUN CAPACITOR 25 MFD 450V		1
20	208534	O RING 39.5MM ID x 3 DIA		1
21	330081	HFM CAPACITOR BOX BOTTOM MOULDING C/W INSERT	G - RANGE USE 905793	1
22	902715	SINGLE SPEED RELAY 230V, RVA6N0D		1
23	219643	M6 X 35MM LONG STAINLESS STEEL POZI PAN SCREW		4
24	330082	HFM MID SECTION MOULDING PRINTED (1500W) (BLUE)	G - RANGE USE 905780	1
25	227008	BLACK CABLE CLAMP		1
26	219914	NO6 X 5/8 INCH LONG POZI-PAN PLASTITE STAINLESS STEEL SCREW		3
27	229213	PLUG COVER		1
28	219647	M6 FORM G STAINLESS STEEL WASHER		4
29	219642	M6 STAINLESS STEEL NYLON INSERT NUT		4
30	330086	MOTOR WIRE SLEEVE		1
31	230136	SUPPRESSOR ASSEMBLY		1
32	237412	HFM TOP MOTOR GASKET		1

Numatic International Spare Parts

Model No: HFM 1515/1523/1530/1545 EXPLODED DRAWING ASSEMBLY

234894
DRAWING: DRW-12020 ISS:A11
09/10/2017

NB: FOR WIRING SEE DRAWING: DRW-11701



Numatic International Spare Parts

Model No: HFM 1515/1523/1530/1545 EXPLODED DRAWING ASSEMBLY

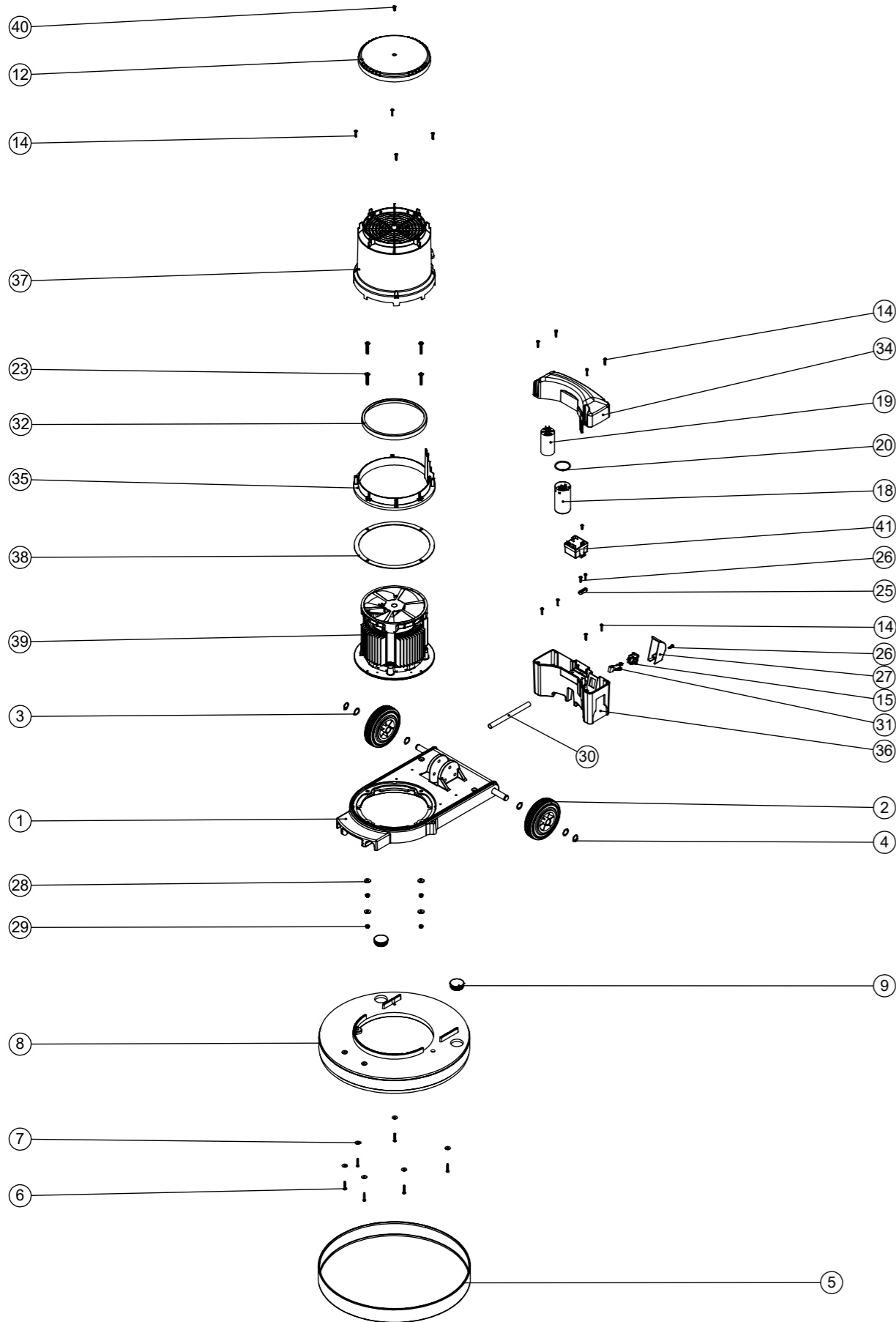
ITEM NO.	PART NO.	DESCRIPTION	Comments	Default/QTY.
1	304260	MULTIDECK BASE MOULDING SUB ASSY	UPDATED, ITEM227557 ADDED	1
2	229060	WHEEL GREY BLACK HUB		2
3	219219	21.5MM X 16.3MM WAVE WASHER		4
4	229051	EXTERNAL CIRCLIP		2
5	206466	LIGHT GREY MEDIUM BUFFER RING (RAL 7042)	G - RANGE USE 206478	1
6	219369	No8 X 1 INCH LONG POZI PAN STAINLESS STEEL PLASTITE SCREW		6
7	219644	M5 FORM G STAINLESS STEEL WASHER		6
8	330010	DECK FOR DUSTROL Y SYSTEM	G - RANGE USE 329072	1
9	229400	BLACK END STOP		2
34	237505	HFM CAPACITOR BOX TOP MOULDING (BLUE)	G - RANGE USE 905782	1
35	237500	BOTTOM SECTION MOULDING (BLUE)	G - RANGE USE 905781	1
12	237503	LID MOULDING (HFM)		1
13	219318	No6 X 1/2 INCH LONG POZI PAN PLASTITE SCREW (Z/PL)		1
14	219568	NO8.3/4 INCH LG.POZI-PAN.SCREW.STAINLESS STEEL.PLASTITE		12
15	220584	RENDAR CLIP IN PLUG		1
16	219471	M4 X 12MM LONG POZI PAN SEMS SCREW		1
18	205088	MOTOR START CAPACITOR 150MFD 280V C/W RESISTOR AND M8 STUD		1
19	220897	MOTOR RUN CAPACITOR 25 MFD 450V		1
20	208534	O RING 39.5MM ID x 3 DIA		1
36	330081	HFM CAPACITOR BOX BOTTOM MOULDING C/W INSERT	G - RANGE USE 905793	1
33	902715	SINGLE SPEED RELAY 230V, RVA6N0D		1
23	219643	M6 X 35MM LONG STAINLESS STEEL POZI PAN SCREW		4
37	330082	HFM MID SECTION MOULDING PRINTED (1500W) (BLUE)	G - RANGE USE 905780	1
25	227008	BLACK CABLE CLAMP		1
26	219914	NO6 X 5/8 INCH LONG POZI-PAN PLASTITE STAINLESS STEEL SCREW		3
27	229213	PLUG COVER		1
28	219647	M6 FORM G STAINLESS STEEL WASHER		4
29	219642	M6 STAINLESS STEEL NYLON INSERT NUT		4
30	330086	MOTOR WIRE SLEEVE		1
31	230136	SUPPRESSOR ASSEMBLY		1
32	237412	HFM TOP MOTOR GASKET		1
38	906405	HFM MOTOR SPLASH GUARD		1
39	205202	INDUCTION MOTOR 4-POLE 1500W 220-240V 50Hz		1

Numatic International Spare Parts

Model No: HFM 1515/1523/1530 EXPLODED DRAWING ASSEMBLY

234894
DRAWING: DRW-12020 ISS:A13
12/02/2024

NB: FOR WIRING SEE DRAWING: DRW-21894 / DRW-40179



Numatic International Spare Parts

Model No: HFM 1515/1523/1530 EXPLODED DRAWING ASSEMBLY

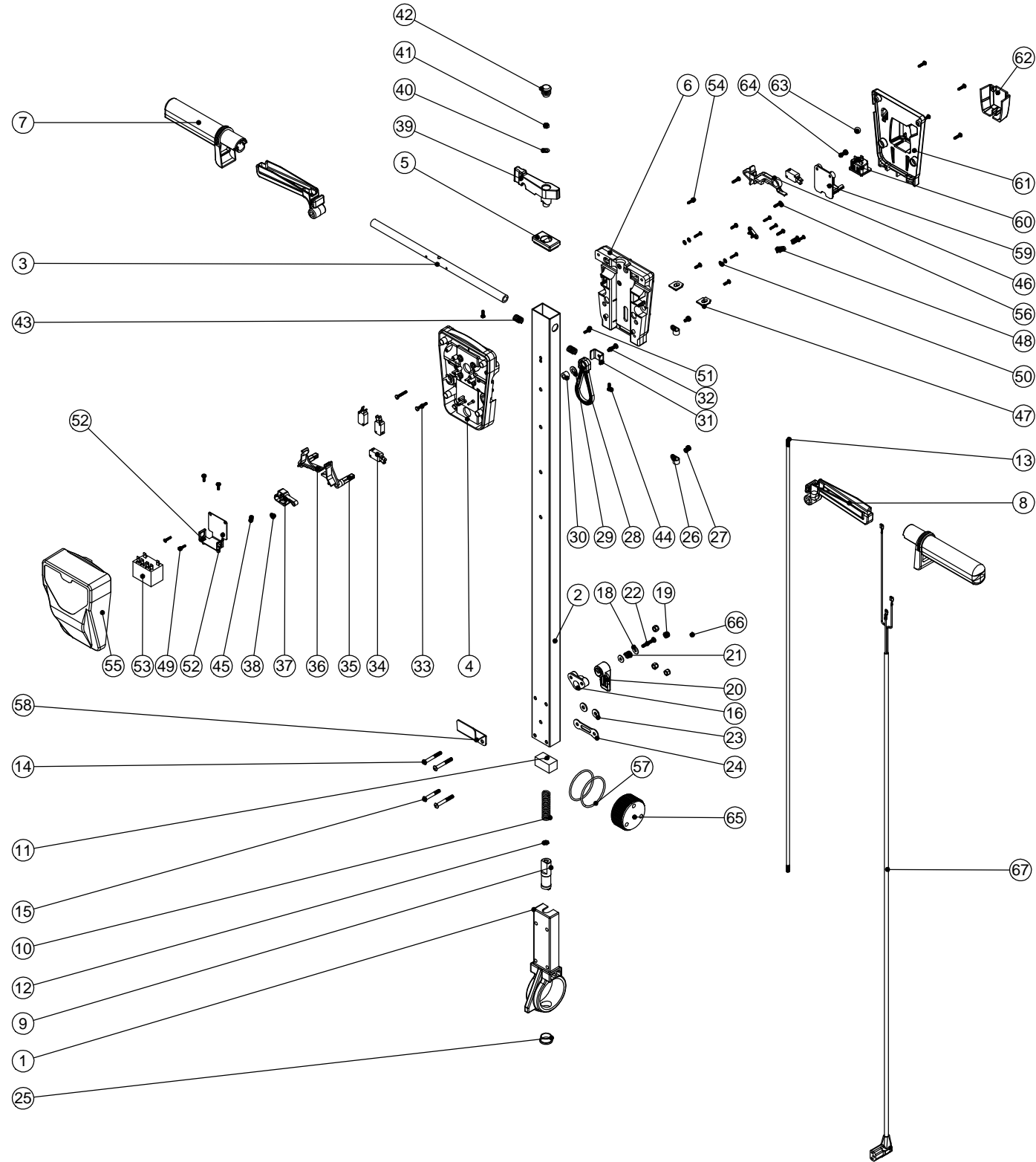
ITEM NO.	PART NO.	DESCRIPTION	Comments	Default/QTY.
1	304260	MULTIDECK BASE MOULDING SUB ASSY	UPDATED, ITEM227557 ADDED	1
2	229060	WHEEL GREY BLACK HUB		2
3	219219	21.5MM X 16.3MM WAVE WASHER		4
4	229051	EXTERNAL CIRCLIP		2
5	206466	MEDIUM RING BUFFER 1300 GREY (RAL 7042)	G - RANGE USE 206478	1
6	219369	No8 X 1 INCH LONG POZI PAN STAINLESS STEEL PLASTITE SCREW		6
7	219644	M5 FORM G STAINLESS STEEL WASHER		6
8	330010	DECK MOD (Y SYSTEM)	G - RANGE USE 329072	1
9	229400	BLACK END STOP		2
34	237505	HFM CAPACITOR BOX TOP MOULDING (BLUE)	G - RANGE USE 905782	1
35	237500	BOTTOM SECTION MOULDING (BLUE)	G - RANGE USE 905781	1
12	237503	HFM LID MOULDING (HFM)		1
13	219318	No6 X 1/2 INCH LONG POZI PAN PLASTITE SCREW (Z/PL)		1
14	219568	NO8.3/4 INCH LG.POZI-PAN.SCREW.STAINLESS STEEL.PLASTITE		12
15	220584	RENDAR CLIP IN PLUG		1
40	219471	M4 X 12MM LONG POZI PAN SEMS SCREW		1
18	205088	MOTOR START CAPACITOR 150MFD 280V C/W 39K RESISTOR AND M8 STUD		1
19	220897	MOTOR RUN CAPACITOR 25 MFD 450V		1
20	208534	O RING 39.5MM ID x 3 DIA		1
36	330081	HFM CAPACITOR BOX BOTTOM MOULDING C/W INSERT	G - RANGE USE 905793	1
41	902715	SINGLE SPEED RELAY 230V, RVA6N0D		1
23	219643	M6 X 35MM LONG STAINLESS STEEL POZI PAN SCREW		4
37	330082	HFM MID SECTION MOULDING PRINTED (1500W) (BLUE)	G - RANGE USE 905780	1
25	227008	BLACK CABLE CLAMP		1
26	219914	NO6 X 5/8 INCH LONG POZI-PAN PLASTITE STAINLESS STEEL SCREW		3
27	229213	PLUG COVER		1
28	219647	M6 FORM G STAINLESS STEEL WASHER		4
29	219642	M6 STAINLESS STEEL NYLON INSERT HALF NUT		4
30	330086	MOTOR WIRE SLEEVE		1
31	230136	SUPPRESSOR ASSEMBLY		1
32	237412	HFM TOP MOTOR GASKET		1
38	906405	HFM MOTOR SPLASH GUARD		1
39	205202	INDUCTION MOTOR 4-POLE 1500W 220-240V 50Hz		1
	908022	FIR R60 INDUCTION MOTOR 2100/1500W 230V 50Hz		1
	914838	230V.50HZ.1500W 4 POLE INDUCTION MOTOR (OLYMPIA PUMPS SRL MOTOR)		1

Numatic International Spare Parts

Model No: HFM HANDLE EXPLODED DRAWING

234899
DRAWING: DRW-12376 ISS:A01
25/09/2012

NB: FOR WIRING SEE DRAWING: DRW-11789



Numatic International Spare Parts

Model No: HFM HANDLE EXPLODED DRAWING

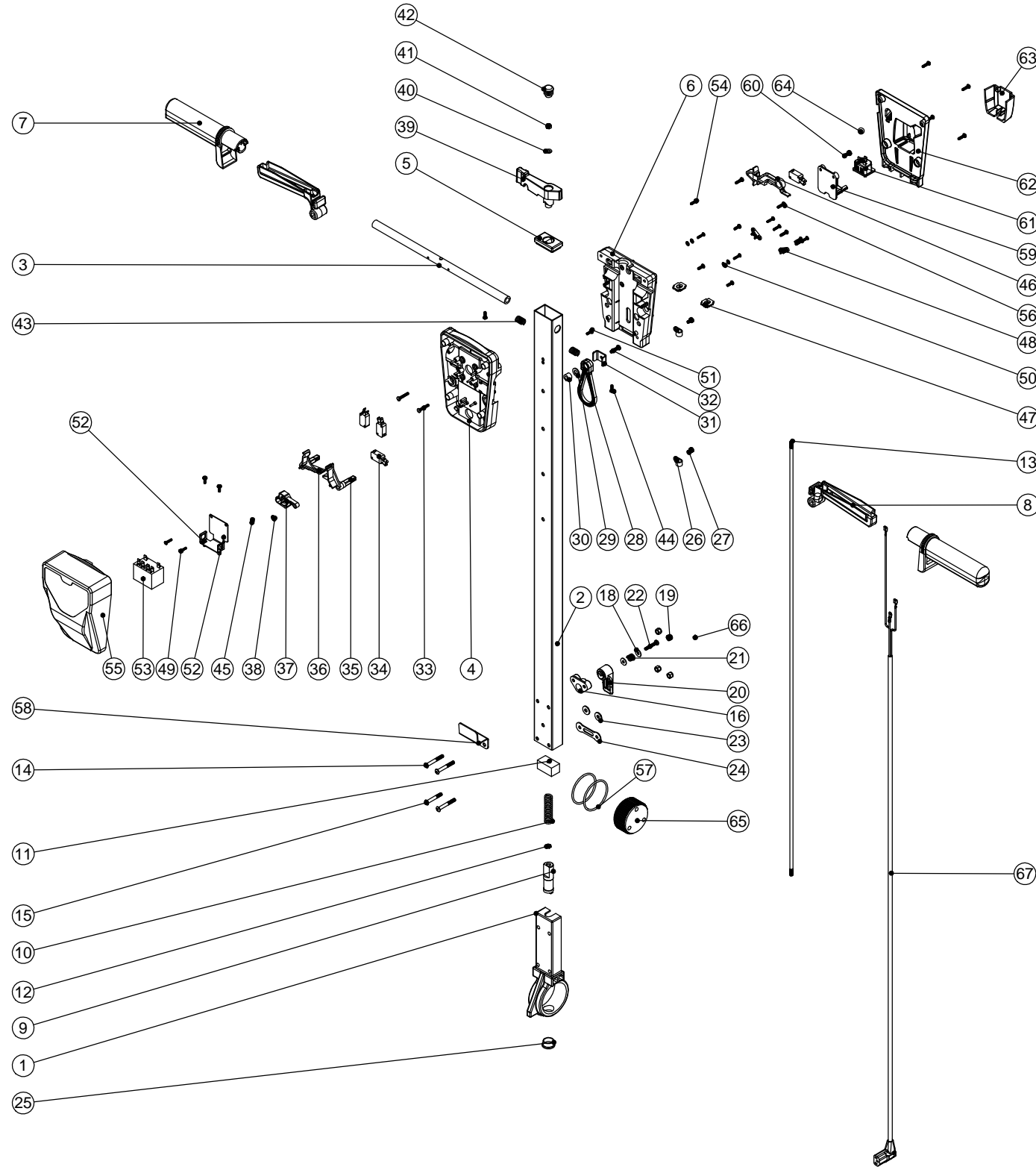
ITEM NO.	PART No	DESCRIPTION	QTY.
1	229081	HANDLE CASTING MACHINED	1
2	429136	HFM HANDLE TUBE PAINTED (1025mm)	1
3	338269	CROSS TUBE	1
4	227576	FRONT INNER HALF MOULDING	1
5	227582	HANDLE PLUG MOULDING	1
6	227577	REAR INNER HALF MOULDING	1
7	227580	HAND GRIP MOULDING	2
8	227581	TRIGGER MOULDING	2
9	229073	GEAR LOCKING PIN	1
10	229138	SPRING	1
11	229030	ANTI VIBRATION PAD	1
12	219099	M6 HALF NUT	1
13	208432	1035MM HANDLE LOCKING ROD	1
14	219881	M6 X 45MM SOCKET BUTTON HEAD SCREW	3
15	219807	M6 X 40MM LONG SOCKET BUTTON HEAD BOLT	1
16	227806	CABLE RELEASE BASE MOULDING	1
17	219076	M5 NYLON INSERT NUT	1
18	219644	M5 FORM G STAINLESS STEEL WASHER	3
19	219088	M6 NYLON INSERT NUT	4
20	227807	CABLE RELEASE TOP MOULDING	1
21	206599	SPRING (REF:C5514370)	1
22	219720	M5 X 30MM LONG STAINLESS STEEL POZI PAN SCREW	1
23	219008	M6 FORM G WASHER	2
24	229139	CABLE CLAMP	1
25	229099	25MM DIA HOLE PLUG	1
26	219393	P CLIP	2
27	219047	M5 X 10MM LONG POZI PAN SEMS SCREW	2
28	226008	STRESS RELIEF	1
29	219010	M8 FORM A WASHER	1
30	226006	SPACER (BLACK)	1
31	329231	STRESS RELIEF BRACKET	1
32	219054	M5 X 20MM LONG POZI PAN SCREW	1
33	219811	NO8 X 1 INCH LONG POZI-PAN SELF TAP SCREW	2
34	229483	SNAP ACTION SWITCH	4
35	227585	LEFT HAND SWITCH OPERATING LEVER MOULDING	1
36	227586	RIGHT HAND SWITCH OPERATING LEVER MOULDING	1
37	227587	CENTRE SWITCH OPERATING LEVER MOULDING	1
38	219805	4MM SPIREFIX	1
39	227583	ADJUSTMENT LEVER MOULDING	1
40	219493	M6 NYLON WASHER	1
41	219642	M6 STAINLESS STEEL NYLON INSERT NUT	1
42	20638V	19MM BLACK TUBE END STOP	1
43	219803	TRIGGER COMPRESSION SPRING	2
44	219270	No8 X 1/2 INCH LONG POZI PAN SELF TAP SCREW	2
45	219804	SWITCH COMPRESSION SPRING	1
46	227584	INTERLOCK LEVER MOULDING	1
47	329539	MODIFIED BLANKING PLATE	2
48	229669	LOLINE HANDLE CABLE CLAMP	2
49	219107	No6 X 5/8 INCH LONG POZI PAN PLASTITE SCREW	8
50	219206	M4 FORM A WASHER	4
51	219471	M4 X 12MM LONG POZI PAN SEMS SCREW	3
52	303526	NUTSERTED RELAY MOUNTING BRACKET	1
53	206575	240V / 25A RELAY	1
54	219101	No8 X 1/2 INCH LONG POZI PAN PLASTITE SCREW	4
55	229679	TRADELIN TWINTEC HANDLE FRONT COVER MOULDING	1
56	219105	No8 X 5/8 INCH LONG POZI PAN PLASTITE SCREW	8
57	219254	O RING 3MM DIA X 60MM I/D	2
58	329000	HANDLE BRACKET	1
59	237425	PTO SUPPORT MOULDING	1
60	220964	APPLIANCE OUTPUT SOCKET	1
61	237426	FM REAR COVER MOULDING	1
62	237427	FM PLUG COVER MOULDING	1
63	229050	12MM (STAINLESS STEEL) BALL BEARING	1
64	219045	M5 X 16MM LONG POZI PAN SEMS SCREW	2
65	229074	ADJUSTMENT GEAR	1
66	229009	BLANKING PLUG	1
67	236161	HFM HANDLE CORD SET ASSEMBLY	1

Numatic International Spare Parts

Model No: HFM HANDLE EXPLODED DRAWING

NB: FOR WIRING SEE DRAWING: DRW-11789

237467 WAS 329539
DRAWING: DRW-12376 ISS:A02
31/01/2013



Numatic International Spare Parts

Model No: HFM HANDLE EXPLODED DRAWING

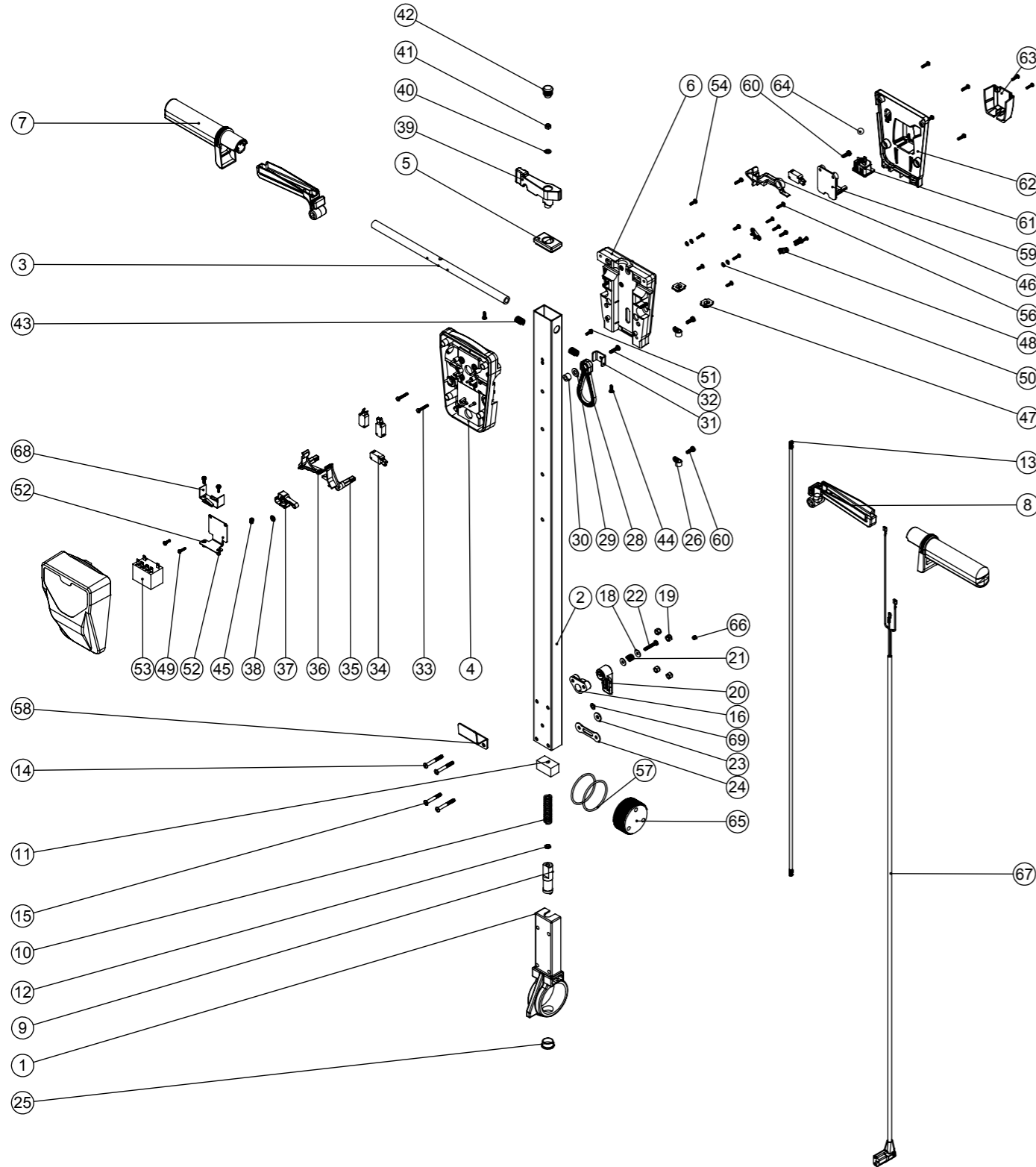
ITEM NO.	PART NO.	DESCRIPTION	QTY.
1	229081	HANDLE CASTING MACHINED	1
2	429136	HFM HANDLE TUBE PAINTED (1025mm)	1
3	338269	CROSS TUBE	1
4	227576	FRONT INNER HALF MOULDING	1
5	227582	HANDLE PLUG MOULDING	1
6	227577	REAR INNER HALF MOULDING	1
7	227580	HAND GRIP MOULDING	2
8	227581	TRIGGER MOULDING	2
9	229073	GEAR LOCKING PIN	1
10	229138	SPRING	1
11	229030	ANTI VIBRATION PAD	1
12	219099	M6 HALF NUT	1
13	208432	1035MM HANDLE LOCKING ROD	1
14	219881	M6 X 45MM SOCKET BUTTON HEAD SCREW	3
15	219807	M6 X 40MM LONG SOCKET BUTTON HEAD BOLT	1
16	227806	CABLE RELEASE BASE MOULDING	1
17	219076	M5 NYLON INSERT NUT	1
18	219644	M5 FORM G STAINLESS STEEL WASHER	3
19	219088	M6 NYLON INSERT NUT	4
20	227807	CABLE RELEASE TOP MOULDING	1
21	206599	SPRING (REF:C5514370)	1
22	219720	M5 X 30MM LONG STAINLESS STEEL POZI PAN SCREW	1
23	219008	M6 FORM G WASHER	2
24	229139	CABLE CLAMP	1
25	229099	25MM DIA HOLE PLUG	1
26	219393	P CLIP	2
27	219047	M5 X 10MM LONG POZI PAN SEMS SCREW	2
28	226008	STRESS RELIEF	1
29	219010	M8 FORM A WASHER	1
30	226006	SPACER (BLACK)	1
31	329231	STRESS RELIEF BRACKET	1
32	219054	M5 X 20MM LONG POZI PAN SCREW	1
33	219811	NO8 X 1 INCH LONG POZI-PAN SELF TAP SCREW	2
34	229483	SNAP ACTION SWITCH	4
35	227585	LEFT HAND SWITCH OPERATING LEVER MOULDING	1
36	227586	RIGHT HAND SWITCH OPERATING LEVER MOULDING	1
37	227587	CENTRE SWITCH OPERATING LEVER MOULDING	1
38	219805	4MM SPIREFIX	1
39	227583	ADJUSTMENT LEVER MOULDING	1
40	219493	M6 NYLON WASHER	1
41	219642	M6 STAINLESS STEEL NYLON INSERT NUT	1
42	20638V	19MM BLACK TUBE END STOP	1
43	219803	TRIGGER COMPRESSION SPRING	2
44	219270	No8 X 1/2 INCH LONG POZI PAN SELF TAP SCREW	2
45	219804	SWITCH COMPRESSION SPRING	1
46	227584	INTERLOCK LEVER MOULDING	1
47	237467	BLANKING PLUG WITH HOLE	2
48	229669	LOLINE HANDLE CABLE CLAMP	2
49	219107	No6 X 5/8 INCH LONG POZI PAN PLASTITE SCREW	8
50	219206	M4 FORM A WASHER	4
51	219471	M4 X 12MM LONG POZI PAN SEMS SCREW	3
52	303526	NUTSERTED RELAY MOUNTING BRACKET	1
53	206575	240V / 25A RELAY	1
54	219101	No8 X 1/2 INCH LONG POZI PAN PLASTITE SCREW	4
55	229679	TRADELIN TWINTEC HANDLE FRONT COVER MOULDING	1
56	219105	No8 X 5/8 INCH LONG POZI PAN PLASTITE SCREW	8
57	219254	O RING 3MM DIA X 60MM I/D	2
58	329000	HANDLE BRACKET	1
59	237425	PTO SUPPORT MOULDING	1
60	219045	M5 X 16MM LONG POZI PAN SEMS SCREW	2
61	220964	APPLIANCE OUTPUT SOCKET	1
62	237426	FM REAR COVER MOULDING	1
63	237427	FM PLUG COVER MOULDING	1
64	229050	12MM (STAINLESS STEEL) BALL BEARING	1
65	229074	ADJUSTMENT GEAR	1
66	229009	BLANKING PLUG	1
67	236161	HFM HANDLE CORD SET ASSEMBLY	1

Numatic International Spare Parts

Model No: HFM HANDLE EXPLODED DRAWING

NB: FOR WIRING SEE DRAWING: DRW-11789

206500 ADDED TO DRAWING
DRAWING: DRW-12376 ISS:A03
13/06/2013



Numatic International Spare Parts

Model No: HFM HANDLE EXPLODED DRAWING

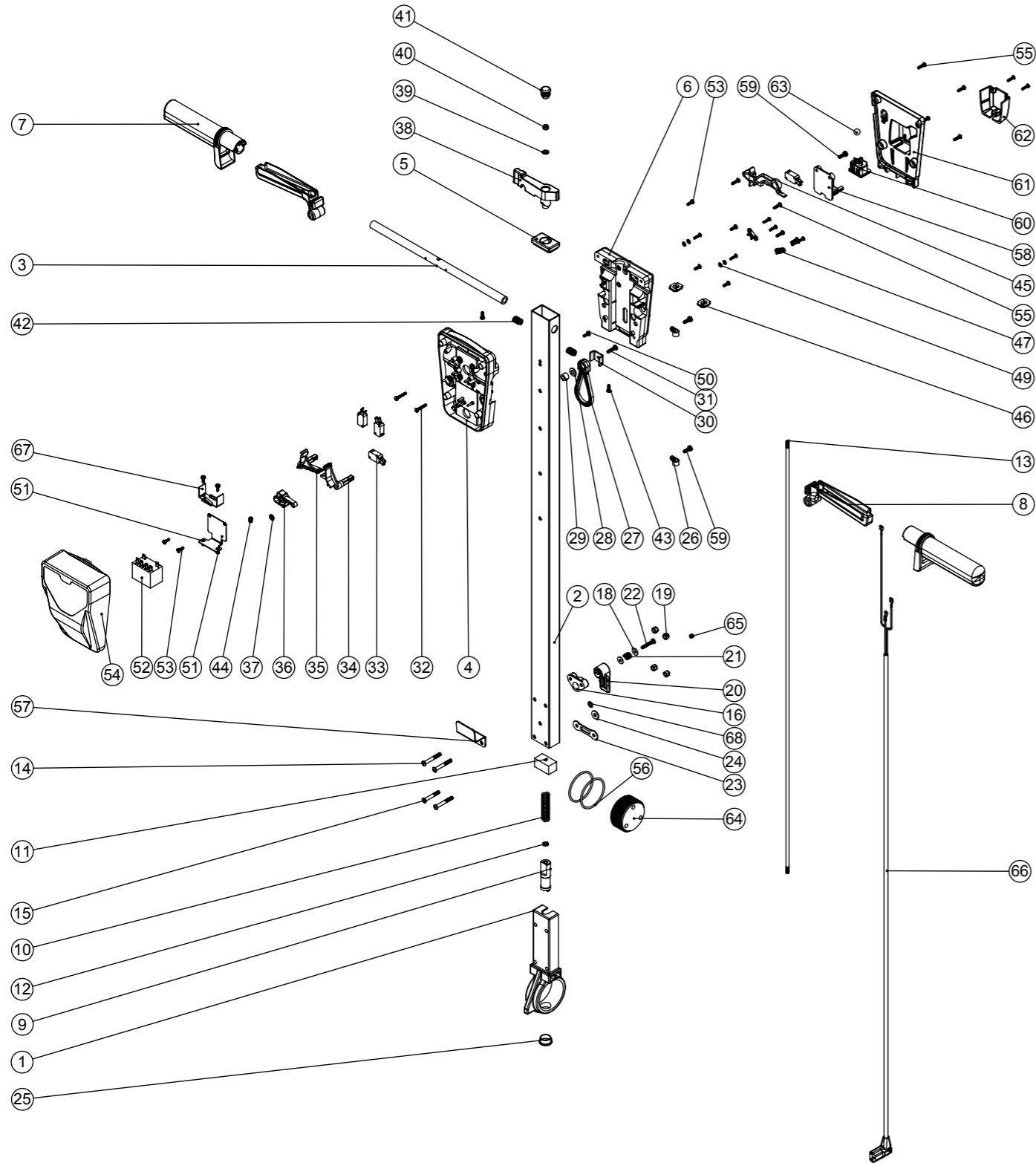
ITEM NO.	PART NO.	DESCRIPTION	QTY.
1	229081	HANDLE CASTING MACHINED	1
2	429136	HFM HANDLE TUBE PAINTED (1025mm)	1
3	338269	CROSS TUBE	1
4	227576	FRONT INNER HALF MOULDING	1
5	227582	HANDLE PLUG MOULDING	1
6	227577	REAR INNER HALF MOULDING	1
7	227580	HAND GRIP MOULDING	2
8	227581	TRIGGER MOULDING	2
9	229073	GEAR LOCKING PIN	1
10	229138	SPRING	1
11	229030	ANTI VIBRATION PAD	1
12	219099	M6 HALF NUT	1
13	208432	1035MM HANDLE LOCKING ROD	1
14	219881	M6 X 45MM SOCKET BUTTON HEAD SCREW	3
15	219807	M6 X 40MM LONG SOCKET BUTTON HEAD BOLT	1
16	227806	CABLE RELEASE BASE MOULDING	1
17	219076	M5 NYLON INSERT NUT	1
18	219644	M5 FORM G STAINLESS STEEL WASHER	3
19	219088	M6 NYLON INSERT NUT	4
20	227807	CABLE RELEASE TOP MOULDING	1
21	206599	SPRING (REF:C5514370)	1
22	219720	M5 X 30MM LONG STAINLESS STEEL POZI PAN SCREW	1
23	219008	M6 FORM G WASHER	1
24	229139	CABLE CLAMP	1
25	229099	25MM DIA HOLE PLUG	1
26	219393	P CLIP	2
70	229679	TRADELIN TWINTEC HANDLE FRONT COVER MOULDING	1
28	226008	STRESS RELIEF	1
29	219010	M8 FORM A WASHER	1
30	226006	SPACER (BLACK)	1
31	329231	STRESS RELIEF BRACKET	1
32	219054	M5 X 20MM LONG POZI PAN SCREW	1
33	219811	NO8 X 1 INCH LONG POZI-PAN SELF TAP SCREW	2
34	229483	SNAP ACTION SWITCH	4
35	227585	LEFT HAND SWITCH OPERATING LEVER MOULDING	1
36	227586	RIGHT HAND SWITCH OPERATING LEVER MOULDING	1
37	227587	CENTRE SWITCH OPERATING LEVER MOULDING	1
38	219805	4MM SPIREFIX	1
39	227583	ADJUSTMENT LEVER MOULDING	1
40	219493	M6 NYLON WASHER	1
41	219642	M6 STAINLESS STEEL NYLON INSERT NUT	1
42	20638V	19MM BLACK TUBE END STOP	1
43	219803	TRIGGER COMPRESSION SPRING	2
44	219270	NO8 X 1/2 INCH LONG POZI PAN SELF TAP SCREW	2
45	219804	SWITCH COMPRESSION SPRING	1
46	227584	INTERLOCK LEVER MOULDING	1
47	237467	BLANKING PLUG WITH HOLE	2
48	229669	LOLINE HANDLE CABLE CLAMP	2
49	219107	NO6 X 5/8 INCH LONG POZI PAN PLASTITE SCREW	9
50	219206	M4 FORM A WASHER	4
51	219471	M4 X 12MM LONG POZI PAN SEMS SCREW	3
52	303526	NUTSERTED RELAY MOUNTING BRACKET	1
53	206575	240V / 25A RELAY	1
54	219101	NO8 X 1/2 INCH LONG POZI PAN PLASTITE SCREW	5
56	219105	NO8 X 5/8 INCH LONG POZI PAN PLASTITE SCREW	8
57	219254	O RING 3MM DIA X 60MM I/D	2
58	329000	HANDLE BRACKET	1
59	237425	PTO SUPPORT MOULDING	1
60	219045	M5 X 16MM LONG POZI PAN SEMS SCREW	4
61	220964	APPLIANCE OUTPUT SOCKET	1
62	237426	FM REAR COVER MOULDING	1
63	237427	FM PLUG COVER MOULDING	1
64	229050	12MM (STAINLESS STEEL) BALL BEARING	1
65	229074	ADJUSTMENT GEAR	1
66	229009	BLANKING PLUG	1
67	236161	HFM HANDLE CORD SET ASSEMBLY	1
68	206500	RELAY BRACKET	1
69	219007	M6 FORM B WASHER	1

Numatic International Spare Parts

Model No: HFM HANDLE EXPLODED DRAWING

NB: FOR WIRING SEE DRAWING: DRW-11789

234899
DRAWING: DRW-12376 ISS:A04
19/09/2013



Numatic International Spare Parts

Model No: HFM HANDLE EXPLODED DRAWING

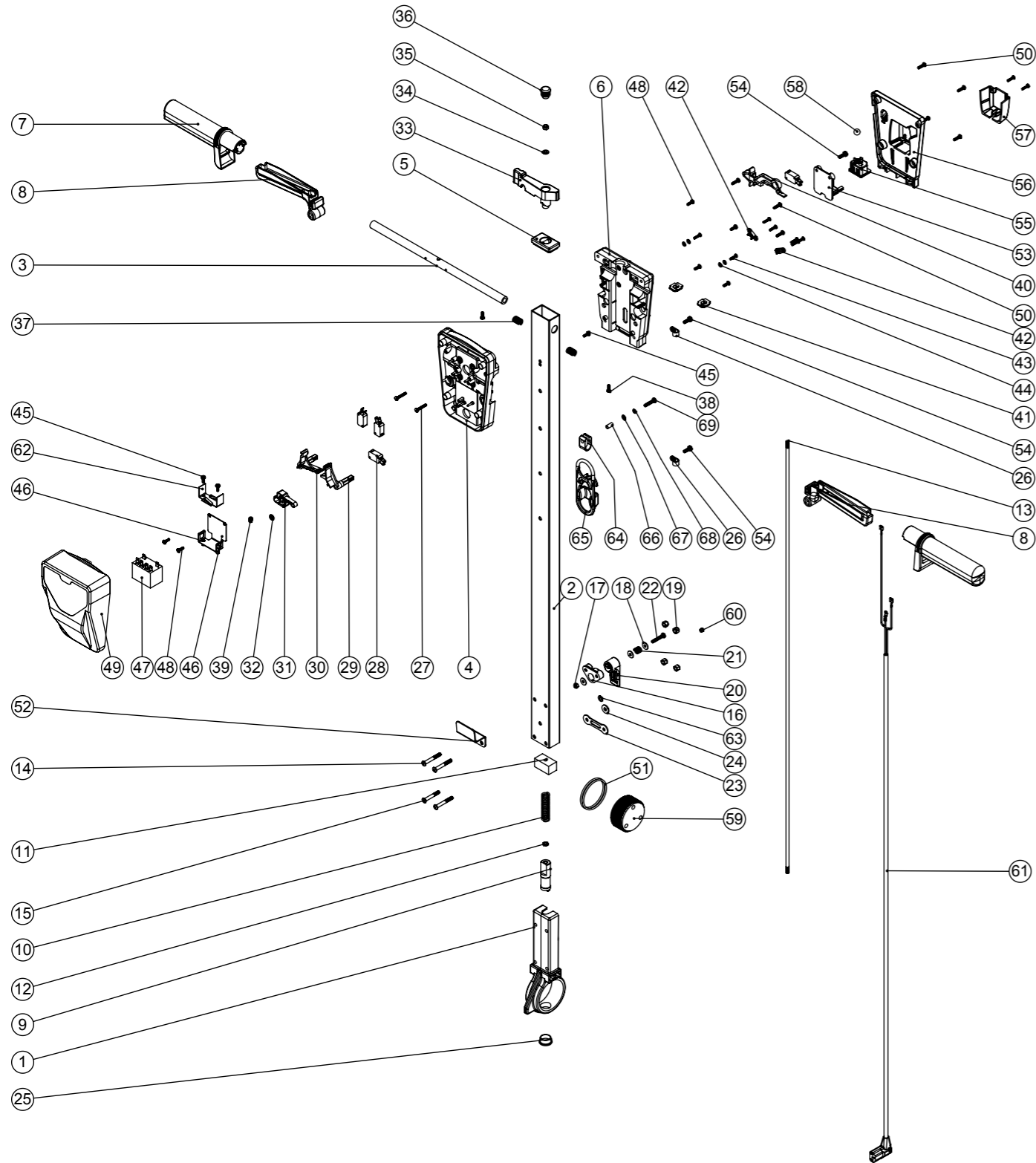
ITEM NO.	PART NO.	DESCRIPTION	QTY.
1	229081	HANDLE CASTING MACHINED	1
2	429136	HFM HANDLE TUBE PAINTED (1025mm)	1
3	338269	CROSS TUBE	1
4	227576	FRONT INNER HALF MOULDING	1
5	227582	HANDLE PLUG MOULDING	1
6	227577	REAR INNER HALF MOULDING	1
7	227580	HAND GRIP MOULDING	2
8	227581	TRIGGER MOULDING	2
9	229073	GEAR LOCKING PIN	1
10	229138	SPRING	1
11	229030	ANTI VIBRATION PAD	1
12	219099	M6 HALF NUT	1
13	208432	1035MM HANDLE LOCKING ROD	1
14	219881	M6 X 45MM SOCKET BUTTON HEAD SCREW	3
15	219807	M6 X 40MM LONG SOCKET BUTTON HEAD BOLT	1
16	227806	CABLE RELEASE BASE MOULDING	1
17	219076	M5 NYLON INSERT NUT	1
18	219644	M5 FORM G STAINLESS STEEL WASHER	3
19	219088	M6 NYLON INSERT NUT	4
20	227807	CABLE RELEASE TOP MOULDING	1
21	206599	SPRING (REF:C5514370)	1
22	219720	M5 X 30MM LONG STAINLESS STEEL POZI PAN SCREW	1
23	229139	CABLE CLAMP	1
24	219008	M6 FORM G WASHER	1
25	229099	25MM DIA HOLE PLUG	1
26	219393	P CLIP	2
27	226008	STRESS RELIEF	1
28	219010	M8 FORM A WASHER	1
29	226006	SPACER (BLACK)	1
30	329231	STRESS RELIEF BRACKET	1
31	219054	M5 X 20MM LONG POZI PAN SCREW	1
32	219811	NO8 X 1 INCH LONG POZI-PAN SELF TAP SCREW	2
33	229483	SNAP ACTION SWITCH	4
34	227585	LEFT HAND SWITCH OPERATING LEVER MOULDING	1
35	227586	RIGHT HAND SWITCH OPERATING LEVER MOULDING	1
36	227587	CENTRE SWITCH OPERATING LEVER MOULDING	1
37	219805	4MM SPIREFIX	1
38	227583	ADJUSTMENT LEVER MOULDING	1
39	219493	M6 NYLON WASHER	1
40	219642	M6 STAINLESS STEEL NYLON INSERT NUT	1
41	20638V	19MM BLACK TUBE END STOP	1
42	219803	TRIGGER COMPRESSION SPRING	2
43	219270	No8 X 1/2 INCH LONG POZI PAN SELF TAP SCREW	2
44	219804	SWITCH COMPRESSION SPRING	1
45	227584	INTERLOCK LEVER MOULDING	1
46	237467	BLANKING PLUG WITH HOLE	2
47	229669	LOLINE HANDLE CABLE CLAMP	2
48	219107	No6 X 5/8 INCH LONG POZI PAN PLASTITE SCREW	8
49	219206	M4 FORM A WASHER	4
50	219471	M4 X 12MM LONG POZI PAN SEMS SCREW	3
51	303526	NUTSERTED RELAY MOUNTING BRACKET	1
52	206575	240V / 25A RELAY	1
53	219101	No8 X 1/2 INCH LONG POZI PAN PLASTITE SCREW	6
54	229679	TRADELINE TWINTEC HANDLE FRONT COVER MOULDING	1
55	219105	No8 X 5/8 INCH LONG POZI PAN PLASTITE SCREW	8
56	219254	O RING 3MM DIA X 60MM I/D	2
57	329000	HANDLE BRACKET	1
58	237425	PTO SUPPORT MOULDING	1
59	219045	M5 X 16MM LONG POZI PAN SEMS SCREW	4
60	220964	APPLIANCE OUTPUT SOCKET	1
61	237426	FM REAR COVER MOULDING	1
62	237427	FM PLUG COVER MOULDING	1
63	229050	12MM (STAINLESS STEEL) BALL BEARING	1
64	229074	ADJUSTMENT GEAR	1
65	229009	BLANKING PLUG	1
66	236161	HFM HANDLE CORD SET ASSEMBLY	1
67	206500	RELAY BRACKET	1
68	219007	M6 FORM B WASHER	1

Numatic International Spare Parts

Model No: HFM HANDLE EXPLODED DRAWING

Internal Code: 234899
DRAWING: DRW-12376 ISS:A11
19/07/2016

NB: FOR WIRING SEE DRAWING: DRW-11789



Numatic International Spare Parts

Model No: HFM HANDLE EXPLODED DRAWING

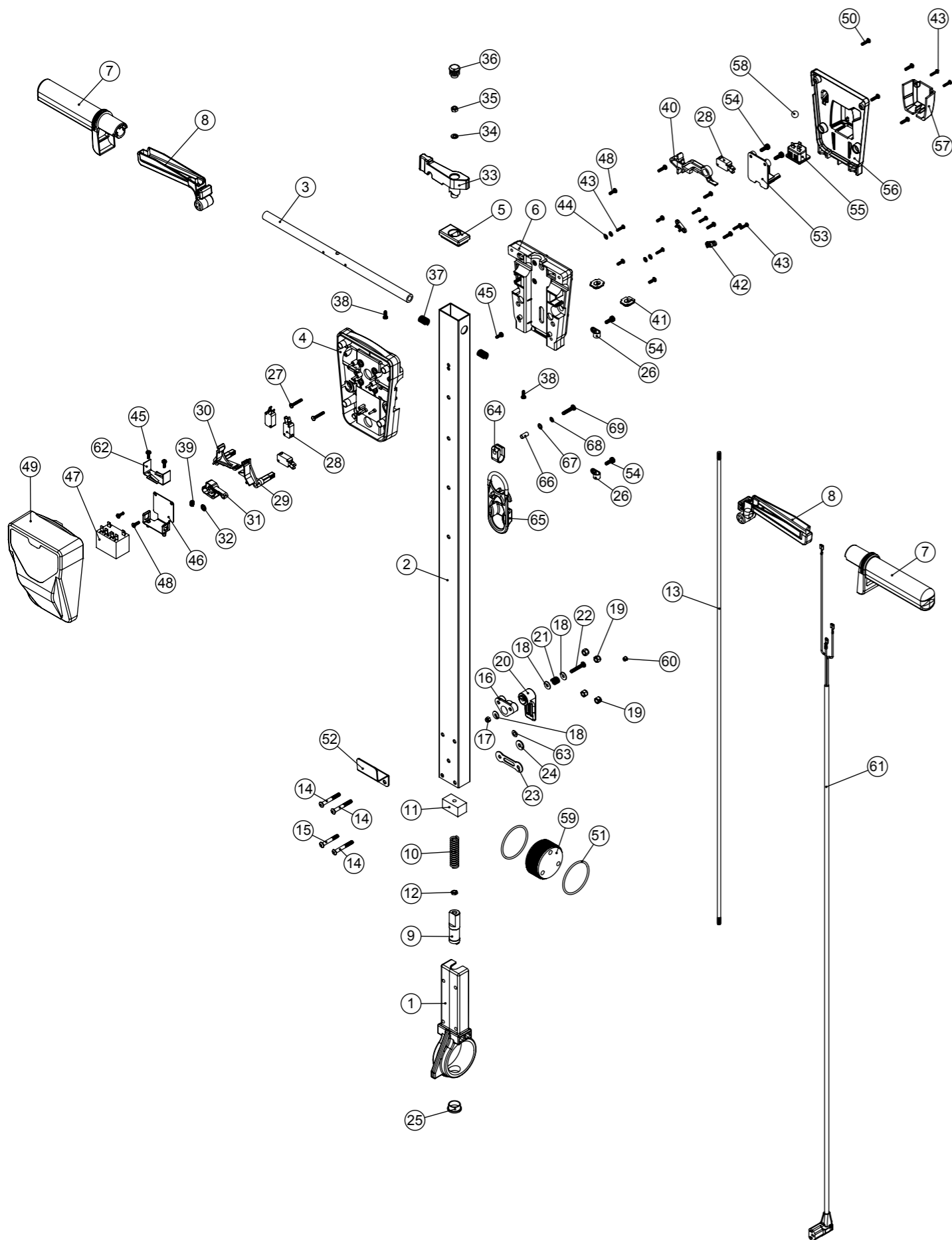
ITEM NO.	Item_No	DESCRIPTION	QTY.
1	229081	HANDLE CASTING MACHINED	1
2	429136	HFM HANDLE TUBE PAINTED (1025mm)	1
3	338269	CROSS TUBE	1
4	227576	FRONT INNER HALF MOULDING	1
5	227582	HANDLE PLUG MOULDING	1
6	227577	REAR INNER HALF MOULDING	1
7	227580	HAND GRIP MOULDING	2
8	227581	TRIGGER MOULDING (GREY)	2
9	229073	GEAR LOCKING PIN	1
10	229138	SPRING	1
11	229030	ANTI VIBRATION PAD	1
12	219099	M6 HALF NUT	1
13	208432	1035MM HANDLE LOCKING ROD	1
14	219881	M6 X 45MM SOCKET BUTTON HEAD SCREW	3
15	219807	M6 X 40MM LONG SOCKET BUTTON HEAD BOLT	1
16	227806	CABLE RELEASE BASE MOULDING	1
17	219076	M5 NYLON INSERT NUT	1
18	219644	M5 FORM G STAINLESS STEEL WASHER	3
19	219088	M6 NYLON INSERT NUT	4
20	227807	CABLE RELEASE TOP MOULDING	1
21	206599	SPRING (REF:C5514370)	1
22	219720	M5 X 30MM LONG STAINLESS STEEL POZI PAN SCREW	1
23	229139	CABLE CLAMP	1
24	219008	M6 FORM G WASHER	1
25	229099	25MM DIA HOLE PLUG	1
26	219393	P CLIP	2
27	219811	NO8 X 1 INCH LONG POZI-PAN SELF TAP SCREW	2
28	229483	SNAP ACTION SWITCH	4
29	227585	LEFT HAND SWITCH OPERATING LEVER MOULDING	1
30	227586	RIGHT HAND SWITCH OPERATING LEVER MOULDING	1
31	227587	CENTRE SWITCH OPERATING LEVER MOULDING	1
32	219805	4MM SPIREFIX	1
33	227583	ADJUSTMENT LEVER MOULDING	1
34	219493	M6 NYLON WASHER	1
35	219642	M6 STAINLESS STEEL NYLON INSERT NUT	1
36	20638V	19MM BLACK TUBE END STOP	1
37	219803	TRIGGER COMPRESSION SPRING	2
38	219270	No8 X 1/2 INCH LONG POZI PAN SELF TAP SCREW	2
39	219804	SWITCH COMPRESSION SPRING	1
40	227584	INTERLOCK LEVER MOULDING	1
41	237467	BLANKING PLUG WITH HOLE	2
42	229669	LOLINE HANDLE CABLE CLAMP	2
43	219107	NO6.5/8 INCH LG.POZI-PAN.SCREW.STAINLESS STEEL.PLASTITE	8
44	219206	M4 FORM A WASHER	4
45	219471	M4 X 12MM LONG POZI PAN SEMS SCREW	3
46	303526	NUTSERTED RELAY MOUNTING BRACKET	1
47	206575	240V / 25A RELAY	1
48	219101	No8 X 1/2 INCH LONG POZI PAN PLASTITE SCREW	6
49	229679	TRADELINE TWINTEC HANDLE FRONT COVER MOULDING	1
50	219105	No8 X 5/8 INCH LONG POZI PAN PLASTITE SCREW	8
51	219254	O RING 3MM DIA X 60MM I/D	2
52	329000	HANDLE BRACKET	1
53	237425	PTO SUPPORT MOULDING	1
54	219045	M5 X 16MM LONG POZI PAN SEMS SCREW	4
55	220964	APPLIANCE OUTPUT SOCKET	1
56	237426	FM REAR COVER MOULDING	1
57	237427	FM PLUG COVER MOULDING	1
58	229050	12MM (STAINLESS STEEL) BALL BEARING	1
59	229074	ADJUSTMENT GEAR	1
60	229009	BLANKING PLUG	1
61	236161	HFM HANDLE CORD SET ASSEMBLY	1
62	206500	RELAY BRACKET	1
63	219007	M6 FORM B WASHER	1
64	219743	CABLE CLEAT	1
65	902312	CABLE STRESS RELIEF	1
66	903192	SPIROL SPACER SP100 5MM NOM ID x 14MM	1
67	219355	M5 FORM A STAINLESS STEEL WASHER	1
68	291084	WASHER.M5.SHAKEPROOF.STAINLESS STEEL	1
69	219575	M5 X 25MM LONG POZI PAN STAINLESS STEEL SCREW	1

Numatic International Spare Parts

Model No: HFM HANDLE EXPLODED DRAWING

NB: FOR WIRING SEE DRAWING: DRW-11789

Internal Code: 234899
 DRAWING: DRW-12376 ISS:A15
 PRO 12/07/2017



Numatic International Spare Parts

Model No: HFM HANDLE EXPLODED DRAWING

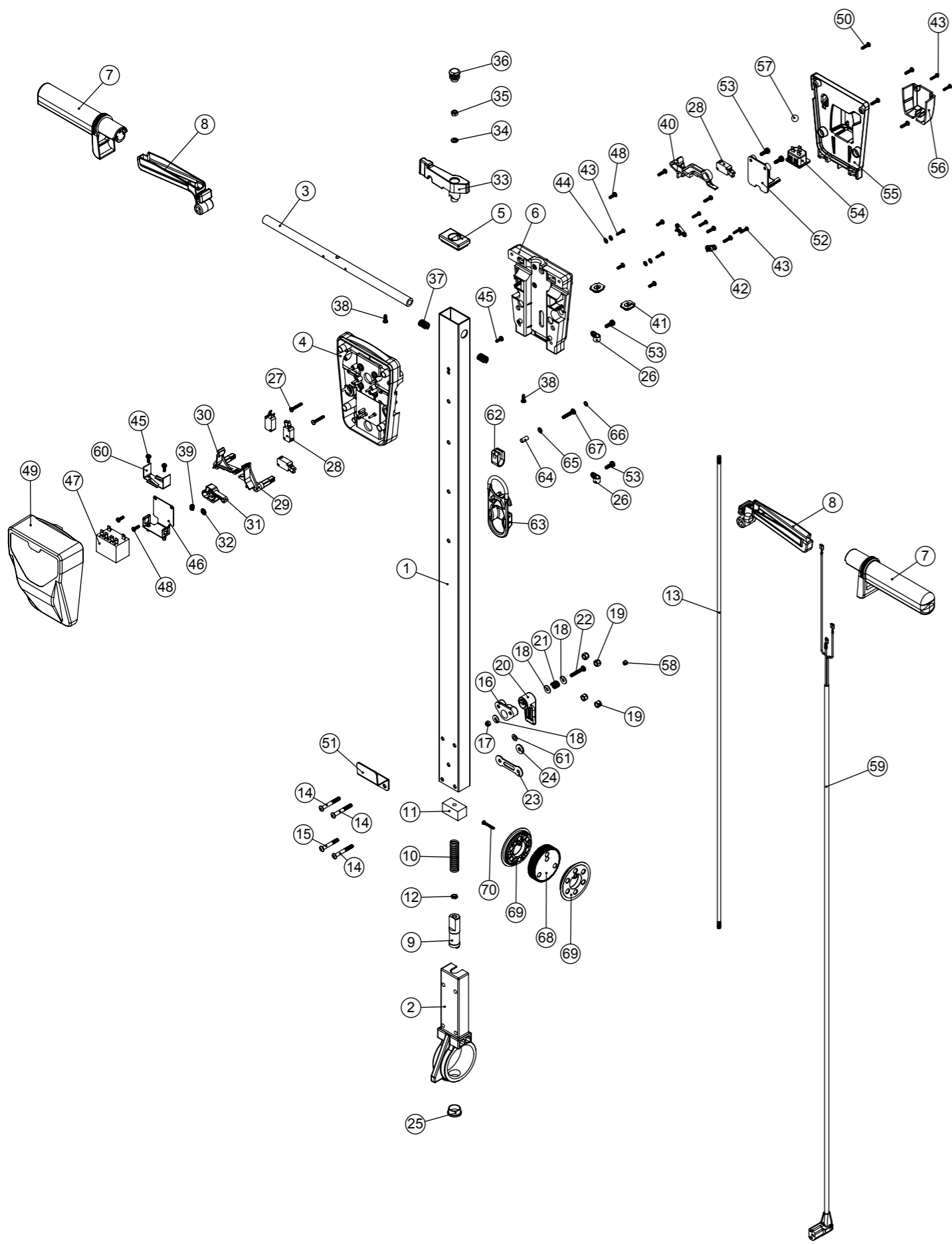
ITEM:	PART No:	Description	Comments	QTY.
1	229081	HANDLE CASTING MACHINED		1
2	429136	HFM HANDLE TUBE PAINTED (1025mm)		1
3	338269	CROSS TUBE		1
4	227576	FRONT INNER HALF MOULDING		1
5	227582	HANDLE PLUG MOULDING	G RANGE USE 903546	1
6	227577	REAR INNER HALF MOULDING		1
7	227580	HAND GRIP MOULDING		2
8	227581	TRIGGER MOULDING (GREY)	G RANGE USE 903547	2
9	229073	GEAR LOCKING PIN		1
10	229138	SPRING		1
11	229030	ANTI VIBRATION PAD		1
12	219099	M6 HALF NUT		1
13	208432	1035MM HANDLE LOCKING ROD		1
14	219881	M6 X 45MM SOCKET BUTTON HEAD SCREW		3
15	219807	M6 X 40MM LONG SOCKET BUTTON HEAD BOLT		1
16	227806	CABLE RELEASE BASE MOULDING	G RANGE USE 903882	1
17	219076	M5 NYLON INSERT NUT		1
18	219644	M5 FORM G STAINLESS STEEL WASHER		3
19	219088	M6 NYLON INSERT NUT		4
20	227807	CABLE RELEASE TOP MOULDING	G RANGE USE 903883	1
21	206599	SPRING (REF:C5514370)		1
22	219720	M5 X 30MM LONG STAINLESS STEEL POZI PAN SCREW		1
23	229139	CABLE CLAMP		1
24	219008	M6 FORM G WASHER		1
25	229099	25MM DIA HOLE PLUG		1
26	219393	P CLIP		2
27	219811	NO8 X 1 INCH LONG POZI-PAN SELF TAP SCREW		2
28	229483	SNAP ACTION SWITCH		4
29	227585	LEFT HAND SWITCH OPERATING LEVER MOULDING		1
30	227586	RIGHT HAND SWITCH OPERATING LEVER MOULDING		1
31	227587	CENTRE SWITCH OPERATING LEVER MOULDING		1
32	219805	4MM SPIREX		1
33	227583	ADJUSTMENT LEVER MOULDING	G RANGE USE 903545	1
34	219493	M6 NYLON WASHER		1
35	219642	M6 STAINLESS STEEL NYLON INSERT NUT		1
36	20638V	19MM BLACK TUBE END STOP		1
37	219803	TRIGGER COMPRESSION SPRING		2
38	219270	No8 X 1/2 INCH LONG POZI PAN SELF TAP SCREW		2
39	219804	SWITCH COMPRESSION SPRING		1
40	227584	INTERLOCK LEVER MOULDING		1
41	237467	BLANKING PLUG WITH HOLE		2
42	229669	LOLINE HANDLE CABLE CLAMP		2
43	219107	NO6.5/8 INCH LG.POZI-PAN.SCREW.Z/PL.PLASTITE		8
44	219206	M4 FORM A WASHER		4
45	219471	M4 X 12MM LONG POZI PAN SEMS SCREW		3
46	303526	NUTSERTED RELAY MOUNTING BRACKET		1
47	206575	240V / 25A RELAY		1
48	219101	No8 X 1/2 INCH LONG POZI PAN PLASTITE SCREW		6
49	229679	TRADELIN TWINTEC HANDLE FRONT COVER MOULDING		1
50	219105	No8 X 5/8 INCH LONG POZI PAN PLASTITE SCREW		8
51	219254	O RING 3MM DIA X 60MM I/D		2
52	329000	HANDLE BRACKET		1
53	237425	PTO SUPPORT MOULDING		1
54	219045	M5 X 16MM LONG POZI PAN SEMS SCREW		4
55	220964	APPLIANCE OUTPUT SOCKET		1
56	237426	FM REAR COVER MOULDING		1
57	237427	FM PLUG COVER MOULDING		1
58	229050	12MM (STAINLESS STEEL) BALL BEARING		1
59	229074	ADJUSTMENT GEAR		1
60	229009	BLANKING PLUG		1
61	236161	HFM HANDLE CORD SET ASSEMBLY		1
62	206500	RELAY BRACKET		1
63	219007	M6 FORM B WASHER		1
64	219743	CABLE CLEAT		1
65	902312	CABLE STRESS RELIEF		1
66	903192	SPIROL SPACER SP100 5MM NOM ID x 14MM		1
67	219355	M5 FORM A STAINLESS STEEL WASHER		1
68	291084	WASHER.M5.SHAKEPROOF.STAINLESS STEEL		1
69	219575	M5 X 25MM LONG POZI PAN STAINLESS STEEL SCREW		1

Numatic International Spare Parts

Model No: HFM HANDLE EXPLODED DRAWING

NB: FOR WIRING SEE DRAWING: DRW-11789

Internal Code: 234899
 DRAWING: DRW-12376 ISS:A16
 PRO 26/09/2017



Numatic International Spare Parts

Model No: HFM HANDLE EXPLODED DRAWING

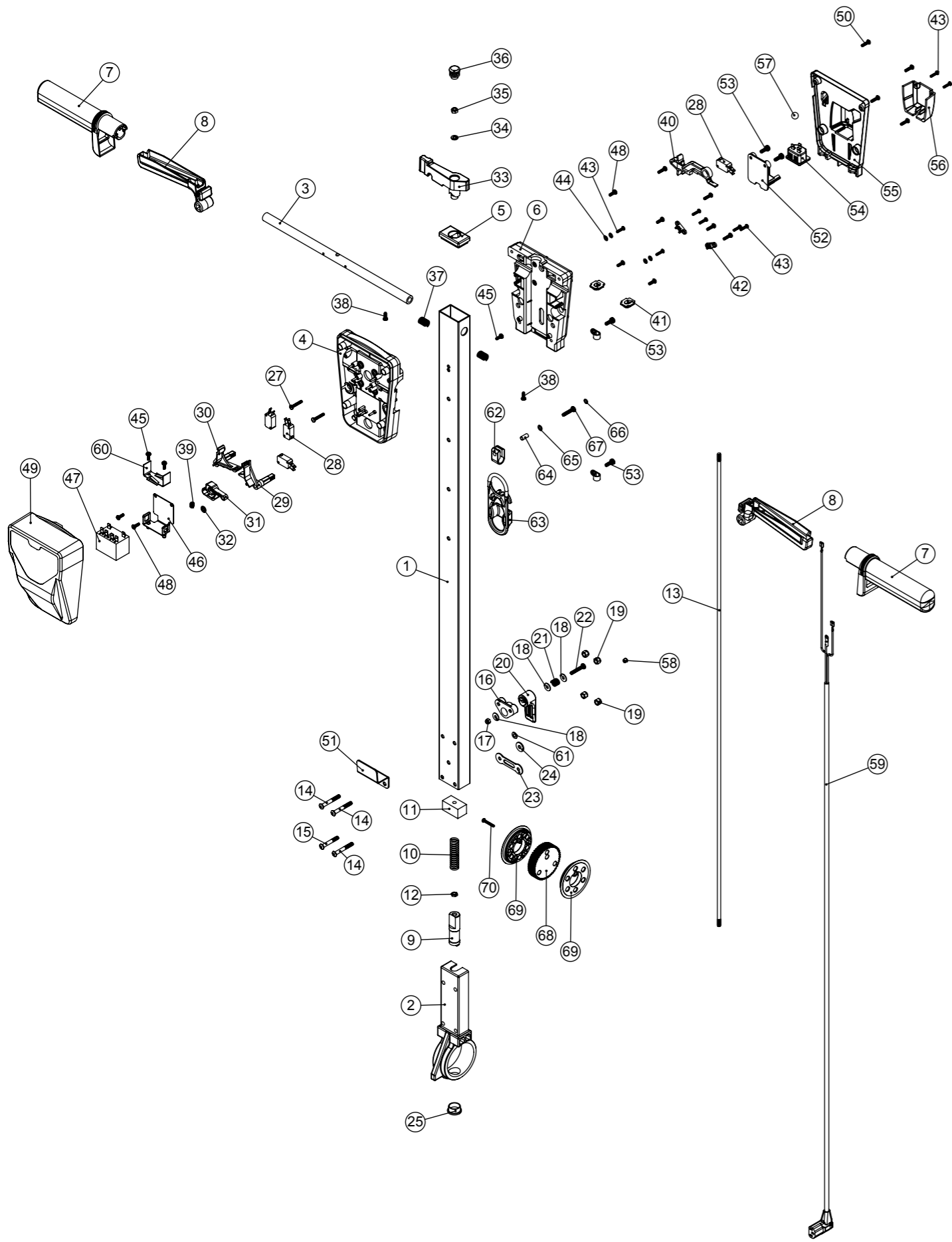
ITEM:	PART No:	DESCRIPTION	COMMENTS	QTY.
1	429136	HFM HANDLE TUBE PAINTED (1025mm)		1
2	900398	HANDLE CASTING MACHINED (HNS VERSION)		1
3	338269	CROSS TUBE		1
4	227576	FRONT INNER HALF MOULDING		1
5	903546	HANDLE PLUG MOULDING (RED)	GREY VERSION 227582	1
6	227577	REAR INNER HALF MOULDING		1
7	227580	HAND GRIP MOULDING		2
8	903547	TRIGGER MOULDING (RED)	GREY VERSION 227581	2
9	229073	GEAR LOCKING PIN		1
10	229138	SPRING		1
11	229030	ANTI VIBRATION PAD		1
12	219099	M6 HALF NUT		1
13	208432	1035MM HANDLE LOCKING ROD		1
14	219881	M6 X 45MM SOCKET BUTTON HEAD SCREW		3
15	219807	M6 X 40MM LONG SOCKET BUTTON HEAD BOLT		1
16	903882	CABLE RELEASE BASE MOULDING RED	GREY VERSION 227806	1
17	219076	M5 NYLON INSERT NUT		1
18	219644	M5 FORM G STAINLESS STEEL WASHER		3
19	219088	M6 NYLON INSERT NUT		4
20	903883	CABLE RELEASE TOP MOULDING RED	GREY VERSION 227807	1
21	206599	SPRING (REF:C5514370)		1
22	219720	M5 X 30MM LONG STAINLESS STEEL POZI PAN SCREW		1
23	229139	CABLE CLAMP		1
24	219008	M6 FORM G WASHER		1
25	229099	25MM DIA HOLE PLUG		1
26	219393	P CLIP		2
27	219811	NO8 X 1 INCH LONG POZI-PAN SELF TAP SCREW		2
28	229483	SNAP ACTION SWITCH		4
29	227585	LEFT HAND SWITCH OPERATING LEVER MOULDING		1
30	227586	RIGHT HAND SWITCH OPERATING LEVER MOULDING		1
31	227587	CENTRE SWITCH OPERATING LEVER MOULDING		1
32	219805	4MM SPIREFIX		1
33	903545	ADJUSTMENT LEVER MOULDING (RED)	GREY VERSION 227583	1
34	219493	M6 NYLON WASHER		1
35	219642	M6 STAINLESS STEEL NYLON INSERT NUT		1
36	20638V	19MM BLACK TUBE END STOP		1
37	219803	TRIGGER COMPRESSION SPRING		2
38	219270	NO8 X 1/2 INCH LONG POZI PAN SELF TAP SCREW		2
39	219804	SWITCH COMPRESSION SPRING		1
40	227584	INTERLOCK LEVER MOULDING		1
41	237467	BLANKING PLUG WITH HOLE		2
42	229669	LOLINE HANDLE CABLE CLAMP		2
43	219107	NO6.5/8 INCH LG.POZI-PAN.SCREW.Z/PL.PLASTITE		8
44	219206	M4 FORM A WASHER		4
45	219471	M4 X 12MM LONG POZI PAN SEMS SCREW		3
46	303526	NUTSERTED RELAY MOUNTING BRACKET		1
47	206575	240V / 25A RELAY		1
48	219101	NO8 X 1/2 INCH LONG POZI PAN PLASTIITE SCREW		6
49	229679	TRADELINE TWINTEC HANDLE FRONT COVER MOULDING		1
50	219105	NO8 X 5/8 INCH LONG POZI PAN PLASTITE SCREW		8
51	329000	HANDLE BRACKET		1
52	237425	PTO SUPPORT MOULDING		1
53	219045	M5 X 16MM LONG POZI PAN SEMS SCREW		4
54	220964	APPLIANCE OUTPUT SOCKET		1
55	237426	FM REAR COVER MOULDING		1
56	237427	FM PLUG COVER MOULDING		1
57	229050	12MM (STAINLESS STEEL) BALL BEARING		1
58	229009	BLANKING PLUG		1
59	236161	HFM HANDLE CORD SET ASSEMBLY		1
60	206500	RELAY BRACKET		1
61	219007	M6 FORM B WASHER		1
62	219743	CABLE CLEAT		1
63	902312	CABLE STRESS RELIEF		1
64	903192	SPIROL SPACER SP100 5MM NOM ID x 14MM		1
65	219355	M5 FORM A STAINLESS STEEL WASHER		1
66	291084	WASHER.M5.SHAKEPROOF.STAINLESS STEEL		1
67	219575	M5 X 25MM LONG POZI PAN STAINLESS STEEL SCREW		1
68	900397	MINI ADJUSTMENT GEAR		1
69	900396	ADJUSTMENT GEAR SPACER		2
70	291150	NO6 X 1 INCH LONG POZI PAN SCREW S/S		1

Numatic International Spare Parts

Model No: HFM HANDLE EXPLODED DRAWING

NB: FOR WIRING SEE DRAWING: DRW-11789

Internal Code: 234899
 DRAWING: DRW-12376 ISS:A18
 PRO 06/06/2018



Numatic International Spare Parts

Model No: HFM HANDLE EXPLODED DRAWING

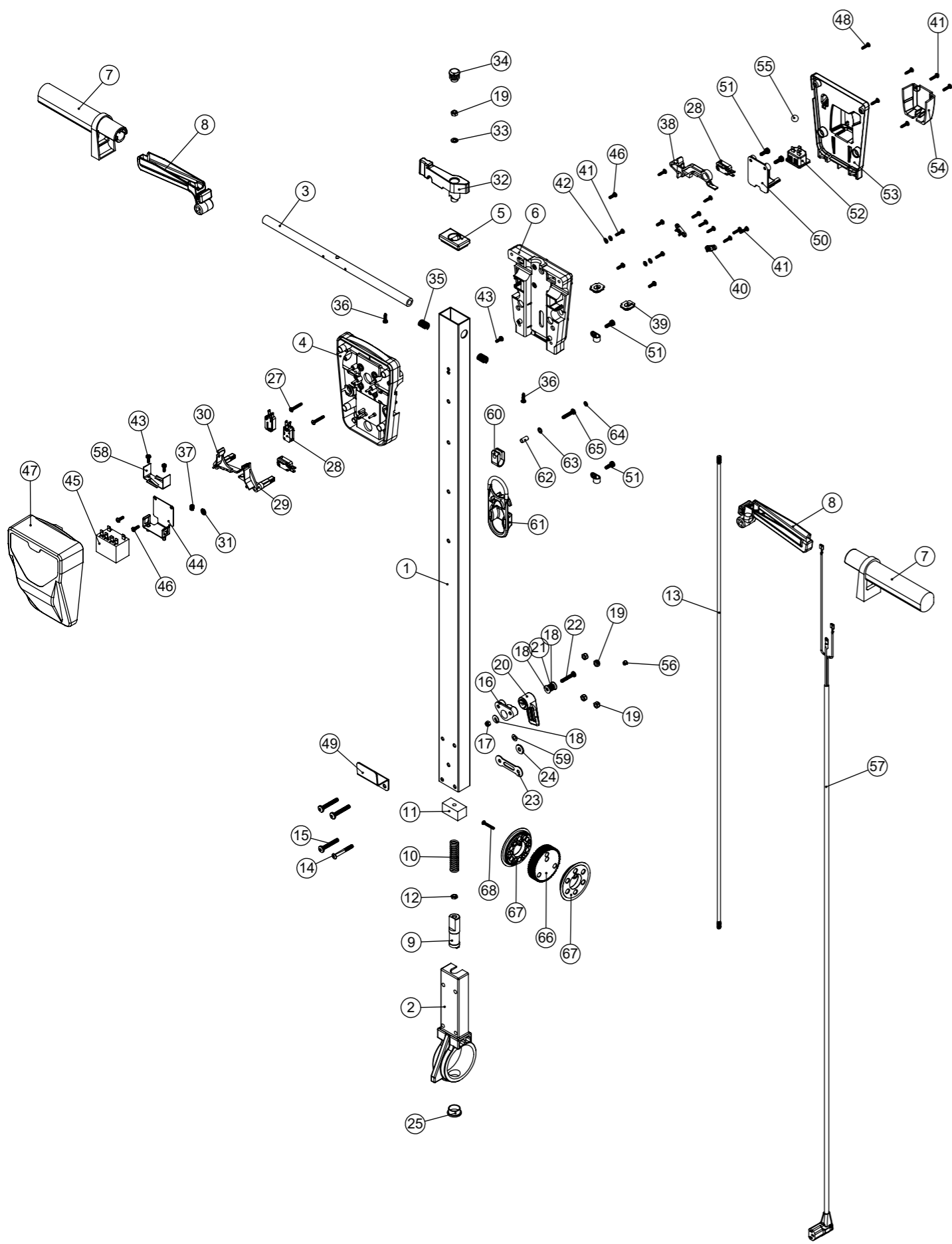
ITEM:	PART No:	DESCRIPTION	FMH HENRY MODEL USE	GREY VERSION	QTY.
1	429136	HFM HANDLE TUBE PAINTED (1025mm)			1
2	900398	HANDLE CASTING MACHINED (HNS VERSION)			1
3	338269	CROSS TUBE			1
4	227576	FRONT INNER HALF MOULDING	237542		1
5	903546	HANDLE PLUG MOULDING (RED)		227582	1
6	227577	REAR INNER HALF MOULDING	237543		1
7	227580	HAND GRIP MOULDING	237544		2
8	903547	TRIGGER MOULDING (RED)		227581	2
9	229073	GEAR LOCKING PIN			1
10	229138	SPRING			1
11	229030	ANTI VIBRATION PAD			1
12	219099	M6 HALF NUT			1
13	208432	1035MM HANDLE LOCKING ROD			1
14	219881	M6 X 45MM SOCKET BUTTON HEAD SCREW			3
15	219807	M6 X 40MM LONG SOCKET BUTTON HEAD BOLT			1
16	903882	CABLE RELEASE BASE MOULDING RED		227806	1
17	219076	M5 NYLON INSERT NUT			1
18	219644	M5 FORM G STAINLESS STEEL WASHER			3
19	219088	M6 NYLON INSERT NUT			4
20	903883	CABLE RELEASE TOP MOULDING RED		227807	1
21	206599	SPRING (REF:C5514370)			1
22	219720	M5 X 30MM LONG STAINLESS STEEL POZI PAN SCREW			1
23	229139	CABLE CLAMP			1
24	219008	M6 FORM G WASHER			1
25	229099	25MM DIA HOLE PLUG			1
26	219393	P CLIP			2
27	219811	NO8 X 1 INCH LONG POZI-PAN SELF TAP SCREW			2
28	229483	SNAP ACTION SWITCH			4
29	227585	LEFT HAND SWITCH OPERATING LEVER MOULDING			1
30	227586	RIGHT HAND SWITCH OPERATING LEVER MOULDING			1
31	227587	CENTRE SWITCH OPERATING LEVER MOULDING			1
32	219805	4MM SPIREFIX			1
33	903545	ADJUSTMENT LEVER MOULDING (RED)		227583	1
34	219493	M6 NYLON WASHER			1
35	219642	M6 STAINLESS STEEL NYLON INSERT NUT			1
36	20638V	19MM BLACK TUBE END STOP			1
37	219803	TRIGGER COMPRESSION SPRING			2
38	219270	NO8 X 1/2 INCH LONG POZI PAN SELF TAP SCREW			2
39	219804	SWITCH COMPRESSION SPRING			1
40	227584	INTERLOCK LEVER MOULDING			1
41	237467	BLANKING PLUG WITH HOLE			2
42	229669	LOLINE HANDLE CABLE CLAMP			2
43	219107	NO6.5/8 INCH LG.POZI-PAN.SCREW.Z/PL.PLASTITE			8
44	219206	M4 FORM A WASHER			4
45	219471	M4 X 12MM LONG POZI PAN SEMS SCREW			3
46	303526	NUTSERTED RELAY MOUNTING BRACKET			1
47	206575	240V / 25A RELAY			1
48	219101	NO8 X 1/2 INCH LONG POZI PAN PLASTITE SCREW			6
49	229679	TRADLINE TWINTEC HANDLE FRONT COVER MOULDING	237547		1
50	219105	NO8 X 5/8 INCH LONG POZI PAN PLASTITE SCREW			8
51	329000	HANDLE BRACKET			1
52	237425	PTO SUPPORT MOULDING			1
53	219045	M5 X 16MM LONG POZI PAN SEMS SCREW			4
54	220964	APPLIANCE OUTPUT SOCKET			1
55	237426	FM REAR COVER MOULDING	237545		1
56	237427	FM PLUG COVER MOULDING	237546		1
57	229050	12MM (STAINLESS STEEL) BALL BEARING			1
58	229009	BLANKING PLUG			1
59	236161	HFM HANDLE CORD SET ASSEMBLY			1
60	206500	RELAY BRACKET			1
61	219007	M6 FORM B WASHER			1
62	219743	CABLE CLEAT			1
63	902312	CABLE STRESS RELIEF			1
64	903192	SPIROL SPACER SP100 5MM NOM ID x 14MM			1
65	219355	M5 FORM A STAINLESS STEEL WASHER			1
66	219016	M5 SHAKEPROOF WASHER			1
67	219575	M5 X 25MM LONG POZI PAN STAINLESS STEEL SCREW			1
68	900397	MINI ADJUSTMENT GEAR			1
69	900396	ADJUSTMENT GEAR SPACER			2
70	291150	NO6 X 1 INCH LONG POZI PAN SCREW S/S			1

Numatic International Spare Parts

Model No: HFM HANDLE EXPLODED DRAWING

NB: FOR WIRING SEE DRAWING: DRW-11789

Internal Code: 234899
DRAWING: DRW-12376 ISS:A19
01/03/2022



Numatic International Spare Parts

Model No: HFM HANDLE EXPLODED DRAWING

ITEM:	PART No:	DESCRIPTION	FMH HENRY MODEL USE	GREY VERSION	QTY.
1	429136	HFM HANDLE TUBE PAINTED (1025mm)			1
2	900398	HANDLE CASTING MACHINED (HNS VERSION)			1
3	338269	CROSS TUBE			1
4	227576	FRONT INNER HALF MOULDING	237542		1
5	903546	HANDLE PLUG MOULDING (RED)		227582	1
6	229509	REAR INNER HALF MOULDING (FR)	237543		1
7	227580	HAND GRIP MOULDING	237544		2
8	903547	TRIGGER MOULDING (RED)		227581	2
9	229073	GEAR LOCKING PIN			1
10	229138	SPRING			1
11	229030	ANTI VIBRATION PAD			1
12	219099	M6 HALF NUT			1
13	208432	1035MM HANDLE LOCKING ROD			1
14	219881	M6 X 45MM SOCKET BUTTON HEAD SCREW			1
15	902522	M6 X 40MM LONG SOCKET BUTTON HEAD STAINLESS STEEL BOLT			3
16	903882	CABLE RELEASE BASE MOULDING RED		227806	1
17	219076	M5 NYLON INSERT NUT			1
18	219644	M5 FORM G STAINLESS STEEL WASHER			3
19	219642	M6 STAINLESS STEEL NYLON INSERT NUT			5
20	903883	CABLE RELEASE TOP MOULDING RED		227807	1
21	206599	SPRING (REF:C5514370)			1
22	219720	M5 X 30MM LONG STAINLESS STEEL POZI PAN SCREW			1
23	229139	CABLE CLAMP			1
24	219647	M6 FORM G STAINLESS STEEL WASHER			1
25	229099	25MM DIA HOLE PLUG			1
26	219393	P CLIP			2
27	219369	No8 X 1 INCH LONG POZI PAN STAINLESS STEEL PLASTITE SCREW			2
28	229483	SNAP ACTION SWITCH			4
29	227585	LEFT HAND SWITCH OPERATING LEVER MOULDING			1
30	227586	RIGHT HAND SWITCH OPERATING LEVER MOULDING			1
31	219805	4MM SPIREFIX			1
32	903545	ADJUSTMENT LEVER MOULDING (RED)		227583	1
33	219493	M6 NYLON WASHER			1
34	20638V	19MM BLACK TUBE END STOP			1
35	219803	TRIGGER COMPRESSION SPRING			2
36	219036	No8 X 5/8 INCH LONG POZI PAN SELF TAPPING SCREW			2
37	219804	SWITCH COMPRESSION SPRING			1
38	227584	INTERLOCK LEVER MOULDING			1
39	237467	BLANKING PLUG WITH HOLE			2
40	229669	LOLINE HANDLE CABLE CLAMP			2
41	219914	NO6 X 5/8 INCH LONG POZI-PAN PLASTITE STAINLESS STEEL SCREW			8
42	219688	M4 FORM A STAINLESS STEEL WASHER			4
43	219471	M4 X 12MM LONG POZI PAN SEMS SCREW			3
44	303526	NUTSERTED RELAY MOUNTING BRACKET			1
45	206575	240V / 25A RELAY			1
46	219569	No8 X 1/2 INCH LONG POZI PAN STAINLESS STEEL PLASTITE SCREW			6
47	229679	TRADELINE TWINTEC HANDLE FRONT COVER MOULDING	237547		1
48	219370	No8 X 5/8 INCH LONG PLASTITE STAINLESS STEEL SCREW			8
49	329000	HANDLE BRACKET			1
50	237425	PTO SUPPORT MOULDING			1
51	219045	M5 X 16MM LONG POZI PAN SEMS SCREW			4
52	220964	APPLIANCE OUTPUT SOCKET			1
53	237426	FM REAR COVER MOULDING	237545		1
54	237427	FM PLUG COVER MOULDING	237546		1
55	229050	12MM (STAINLESS STEEL) BALL BEARING			1
56	229009	BLANKING PLUG			1
57	236161	HFM HANDLE CORD SET ASSEMBLY			1
58	206500	RELAY BRACKET			1
59	219560	M6 FORM B STAINLESS STEEL WASHER			1
60	219743	CABLE CLEAT			1
61	902312	CABLE STRESS RELIEF			1
62	903192	SPIROL SPACER SP100 5MM NOM ID x 14MM			1
63	219355	M5 FORM A STAINLESS STEEL WASHER			1
64	219016	M5 SHAKEPROOF WASHER			1
65	219575	M5 X 25MM LONG POZI PAN STAINLESS STEEL SCREW			1
66	900397	MINI ADJUSTMENT GEAR			1
67	900396	ADJUSTMENT GEAR SPACER			2
68	291150	NO6 X 1 INCH LONG POZI PAN SCREW S/S			1

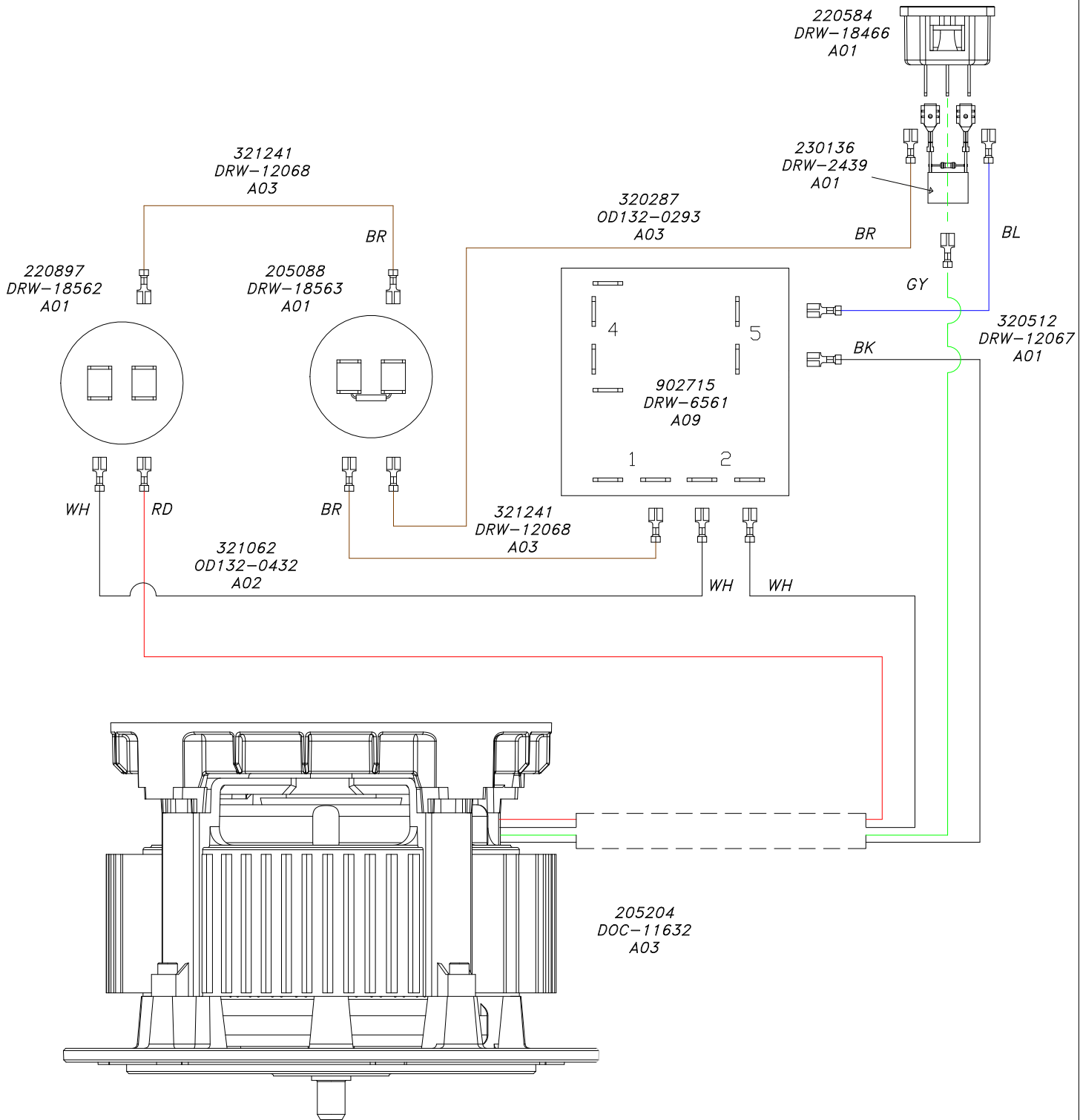
WIRING DIAGRAM

COMP. No
902901

DRG. No
DRW-21897

WIRING DIAGRAM.FLOORCARE.1S.3W.220.50.B.PLG

ISSUE	REVISION	DRAWN	APPD.	DATE
A02	RELAY 206823 UPDATED WITH 902715 REF ECO-19122	MS	MC	23:02:16



KEY: WIRE COLOURS

- BK - BLACK
- BL - BLUE
- BR - BROWN
- GR - GREEN
- GY - GREEN/YELLOW
- OR - ORANGE
- RD - RED
- SL - SLATE
- WH - WHITE
- YL - YELLOW
- P - PURPLE

