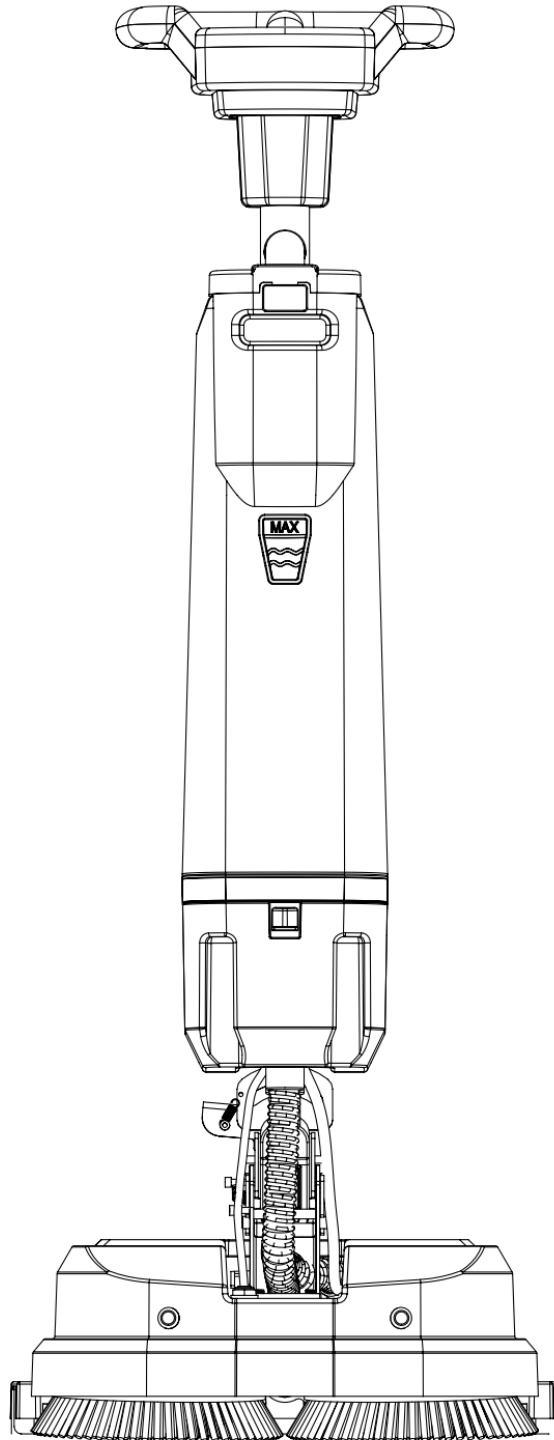


## TIGER 40 FLOOR SCRUBBING MACHINE



Please read this manual carefully before use

## 1.0 Overview



**Notice:** Please read this manual carefully before operating the TIGER 40 scrubber-dryermachine.

TIGER 40 miniature automatic floor scrubber is a mechanical movement of disc brush and chemical action of water and detergent solution, which can be used to clean hard floors with various stains, and collect the removed stains and untreated stains while doing it. A machine for floors to absorb cleaner solutions.

### Use:

The scientific name of the machine is a miniature fully automatic scrubber. It is suitable for fast mechanized floor cleaning of small office buildings, hotels, restaurants and workshops, etc., and the cleaning operation is more efficient and faster.

This device is not suitable for use in the rain or under a water jet. It is strictly forbidden to use this device to collect dangerous dust or flammable liquids in flammable and explosive environments. In addition, the device is not suitable for use as a means of transportation.

## 2.0 Summary of Security Matters



**Notice:** Operators please read this manual carefully

- Before starting any work, it is important to familiarize yourself with all of the scrubber's design, controls and functions.
- When using the scrubber for the first time, the operator should place it in an open area to understand its various functions.
- Before starting any operational work, check the general and operational condition of the scrubber and its parts.
- If the floor scrubber isn't working properly, the equipment cannot be used.
- The operator must use the scrubber for the proper application (cleaning hard floors).
- When operating, pay attention to obstacles in the workplace, such as stairs, shelves, etc., and pay attention to the surrounding people, especially children.
- Use appropriate cleaning agents (only use cleaning agents in accordance with the cleaning agent manufacturer's instructions, with appropriate dosages and restrictions).
- This scrubber should only be maintained and serviced by properly trained personnel using suitable tools.
- Turn off the power or remove the battery when cleaning or maintaining the scrubber.
- Don't use high-pressure water or steam equipment to clean the scrubber.
- Prohibit electrical components from entering water.



**Notice:** ▲ Don't use this scrubber to clean flammable liquids, solvents, fuel oil, active

metal vapor or flammable dust.

▲ Electric shock hazard. Don't use damaged wires. Unplug the power cord before servicing.

▲ FOR SAFETY: Using an incompatible battery charger may result in battery damage or fire.

### 3.0 Tiger 40 Floor Scrubber Specifications

ITEM	Specifications
Voltage	DC36V
Working width	42cm
Water absorption width	44cm
Work efficiency	700m <sup>2</sup> /h
Brush disc diameter (bristle)	17.5cm ( 21cm )
Brush speed slow/fast	270/340rpm
Brush motor	2*150W
Brush plate pressure	11kg
Suction motor	150W
Vacuum	120mbar
Turning radius	30cm
Clean water tank capacity	2L
Sewage Tank Capacity	3.5L
Noise level	63dB
Battery	7.5Ah-36V (Lithium battery)
Battery weight	1.8 kg
N.W	16kg
G.W	20kg

## 4.0 Packaging of the machine

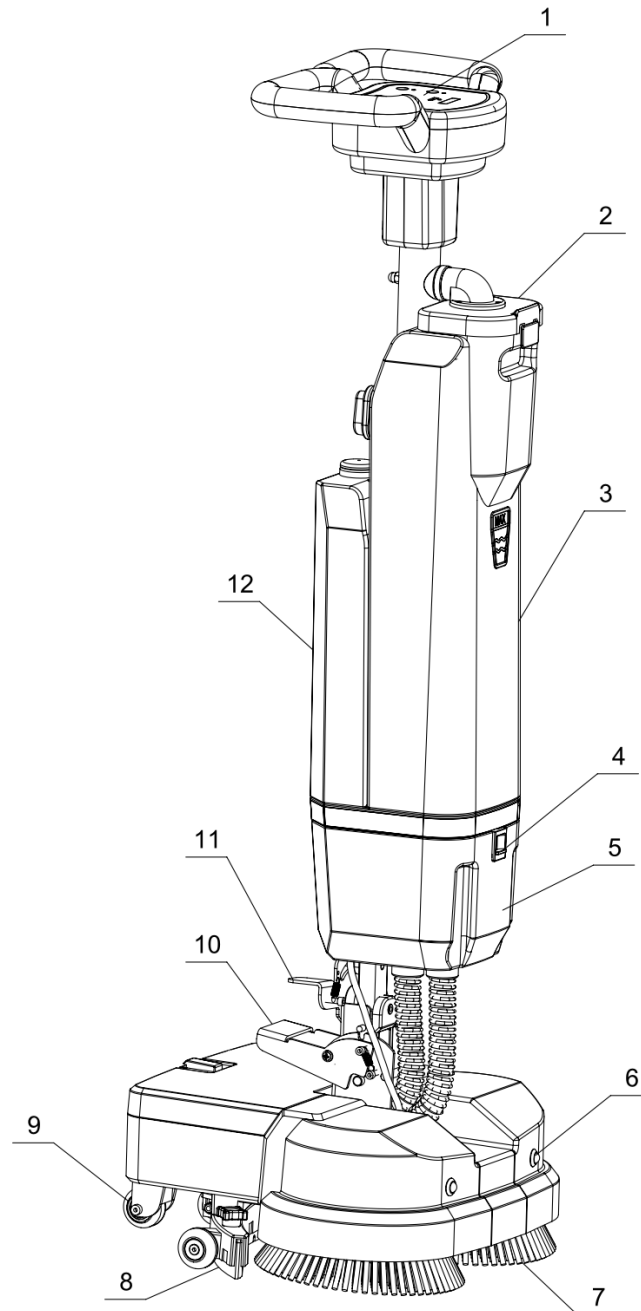
Package size as follows:

Length: 116cm

Width: 46cm

High: 35cm

## 5.0 Machine components



1.control Panel

2.sewage tank cover

3.sewage tank

4.Battery compartment lock

5.Battery compartment

6.LED light

7. brush plate

8.Squeegee

9. transport wheel

10.Vertical buckle unlock rocker

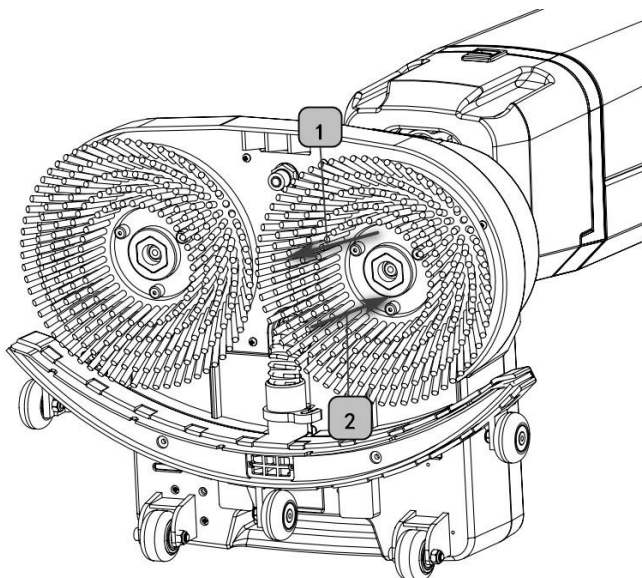
11.Vertical buckle lock press

12.clean water tank

## 6.0 Instructions for use

### 6-1 Brush Disassembly and Installation Instructions: pic6-1

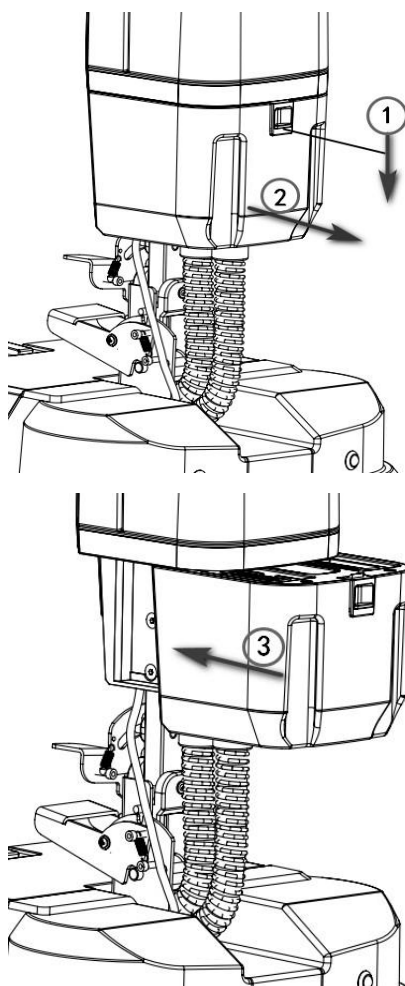
1. According to the direction of arrow 1 in the figure, you can directly pull out the brush tray.
2. Align the hexagonal column and push it in the direction of arrow 2 in the figure to tighten the brush plate.



Pic 6-1

### 6-2 Battery Removal and Installation Instructions: pic 6-2.

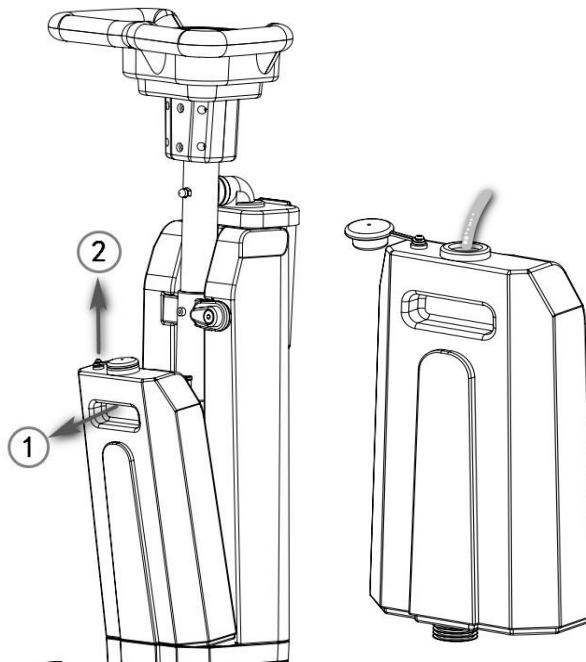
1. Press the battery lock.
2. Press and hold the battery lock and pull it in the direction of the arrow to remove the battery.
3. Align the slot and push the battery to the end, the buckle of the battery is fastened, and the battery is installed.



Pic 6-2

6-3 Instructions for filling water: pic 6-3- (1) ~ (2)

1. Pic 6-3-(1) Step 1 Push the clean water tank outward to disengage the buckle.
2. Pic 6-3- (1) Step 2 Lift the clean water tank up.
3. Pic 6-3- (2) Open the water tank cover and fill the water tank with clean water.



Pic 6-3- (1)

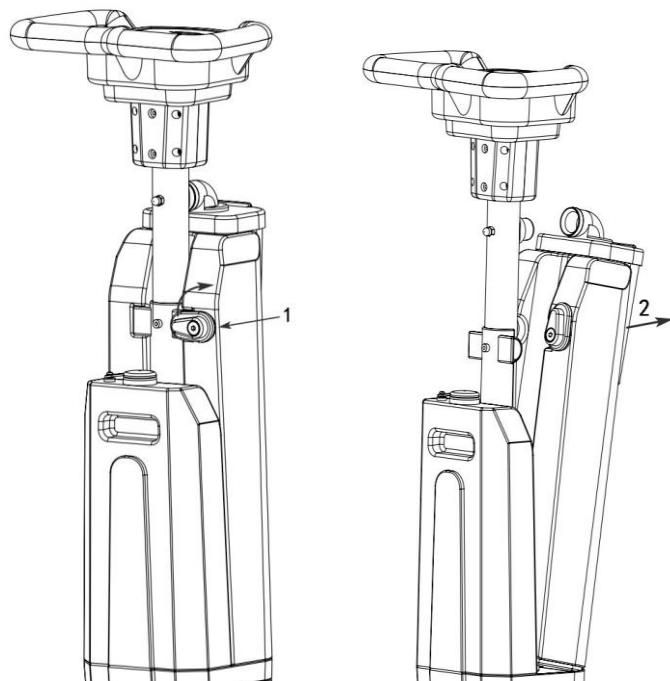
Pic 6-3- (2)

**Notice: The recovery tank must be emptied when refilling the solution tank.**

**Notice: Don't fill the solution tank with water or unclean water from the recovery tank. It will clog the pipes.**

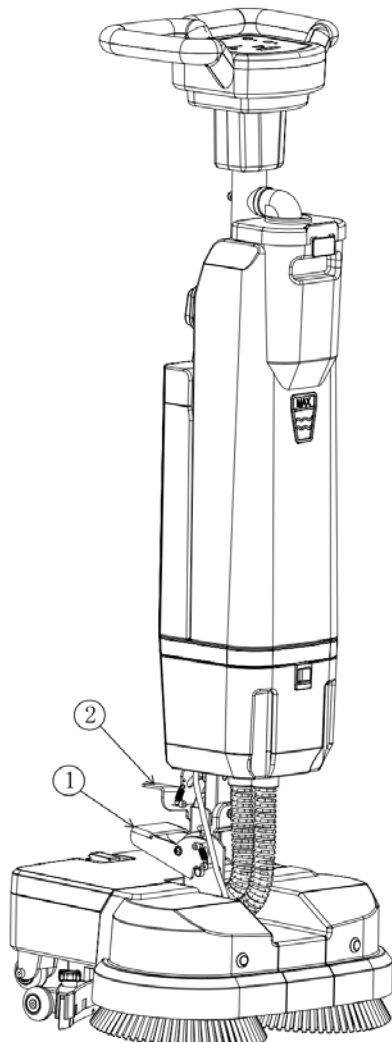
6-4 Sewage Tank Removal  
Instructions: Pic 6-4- (1) - (2)

1. Pic 6-4- (1) Push up the sewage tank swing button.
2. Pic 6-4- (2) First open the upper end of the sewage tank outwards, disengage the joint, and lift it away.



Pic 6-4- (1)

Pic 6-4- (2)



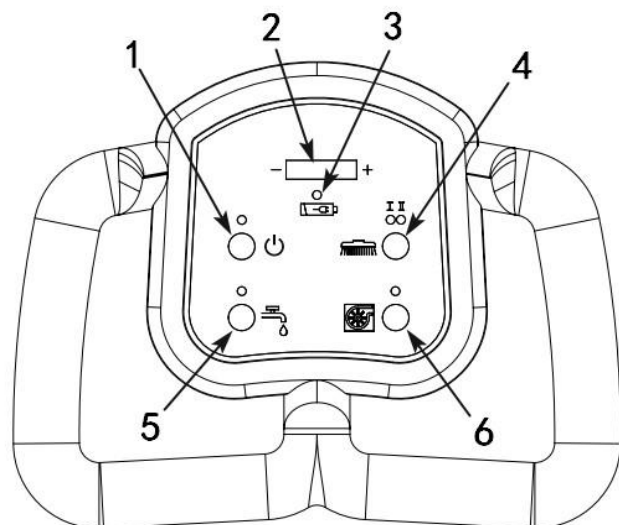
6-5 Instructions for Unlocking and Locking the Universal Joint of the Machine: pic 6-5

1. Unlocking: Grab the operating handle with your hands first, then step down the rocker ① to the lowest position with your feet, and then you can use the machine.
2. Locking: Step on the rocker ② to the lowest position with your feet, swing the handle back and forth, left and right to make it perpendicular to the machine head, and the machine handle will be automatically locked vertically.

Pic 6-5

6-6 Control panel illustration: Pic 6-6

1. Power switch
2. Battery indicator
3. Low battery indicator light, the light is on and flashing, indicating that the battery is low and needs to be charged in time.
4. Brush plate switch (cycle ECO slow, & fast)
5. Clean water switch
6. Suction switch



Pic 6-6

## 6-8 Battery charging:



**Notice:** Must use the battery charger approved and provided by the company (Pic 6-8), Using an incompatible charger may damage the battery and possibly result in a fire. When charging, both batteries must be charged together.

Correct charging steps:

1. Transport the machine to a well-ventilated area.
2. Park the machine in a dry level place and turn off the main power.
3. Plug the DC cable plug of the charger into the charging socket of the machine.
4. Connect the charger's AC power cord into a properly grounded outlet.
5. The charger will start charging automatically, and the charging time is about 2 hours and 30 minutes.
6. After the charging cycle is complete, unplug the AC power plug from the outlet first, then unplug the DC charging plug from the machine.



Pic 6-8

## 7.0 Maintenance

### 1、 Daily maintenance and maintenance

- (1) Remove the pad/brush plate and wipe it clean with a specific cleaner.
- (2) Drain the recovery and solution tanks and rinse them with clean water. Check recovery tank for debris and remove immediately.
- (3) Lift the squeegee assembly off the ground and wipe the squeegee with a damp towel.
- (4) Wipe the machine clean with a specific cleaner.
- (5) Charge the battery.
- (6) Check whether the edge of the scraper is sharp. If it is damaged, please turn it over and use it or replace it.

### 2、 Monthly maintenance and maintenance

- (1) Check for loose or corroded battery connections.
- (2) Lubricate all lubrication points and shafts with a specific lubricant.
- (3) Check for loose machine fasteners.
- (4) Check the water tank for leaks. Check the sealing strip of the waste water tank cover and replace if damaged.

### 3、 Machine storage

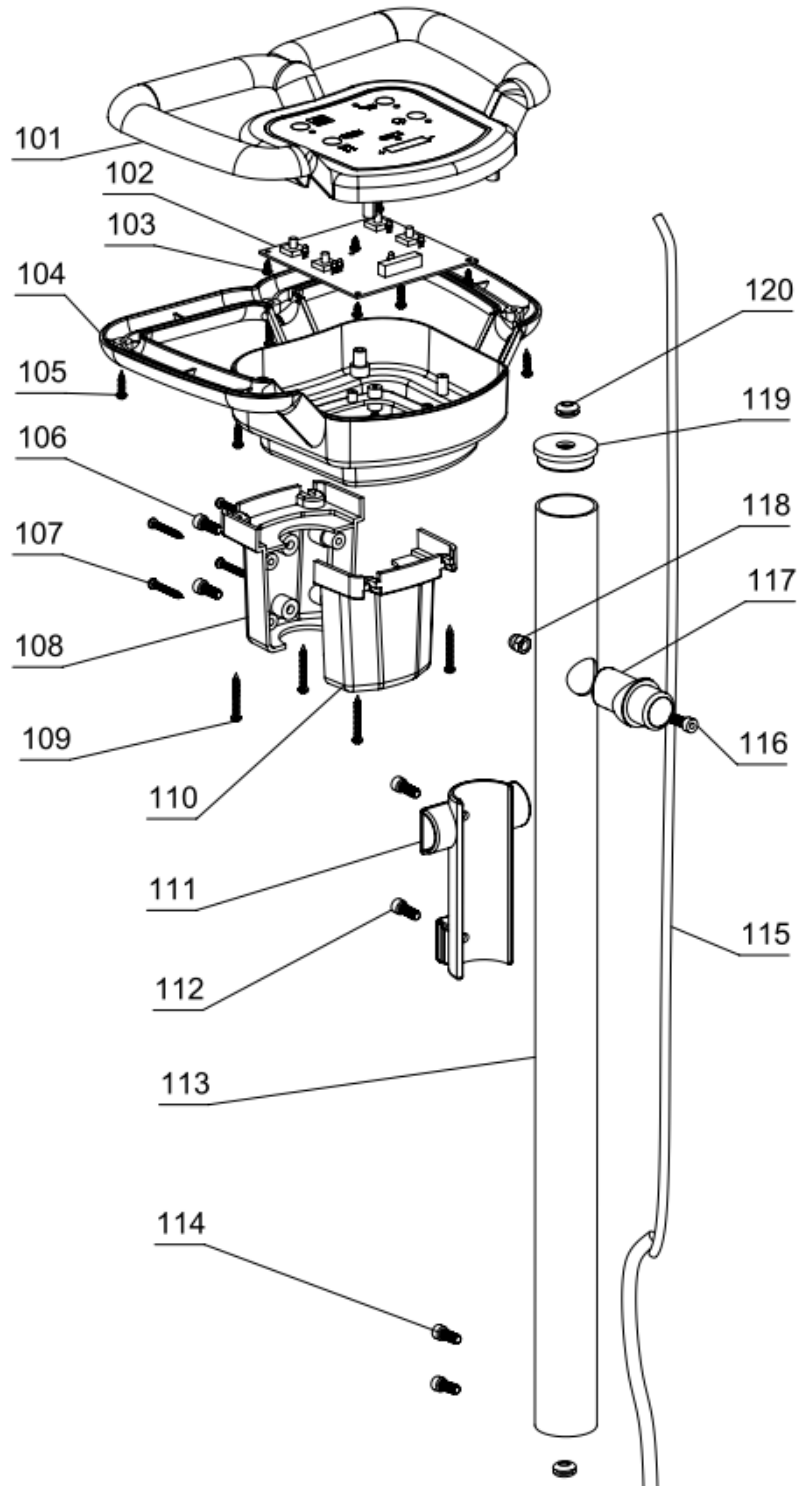
- (1) Store indoors in a dry place.
- (2) Store upright.
- (3) If the storage place is extremely cold, the machine needs to be kept completely dry before storing to avoid damage caused by low temperature.
- (4) Drain the recovery and solution tank



## 8.0 Common faults and solutions

Fault	Cause Analysis	Solution
Machine can't working	The power switch is not turned on	Please turn on the power switch
	The battery is low and needs to be charged	Charge the battery
	Battery damage	Replace the battery
	Damaged power switch	Contact the manufacturer
The brush motor not run	The battery is low and needs to be charged	Charge the battery
	The brush motor is damaged or its circuit is damaged	Contact the manufacturer
	Solenoid switch damaged	Contact the manufacturer
	Controller damage	Contact the manufacturer
	The drive motor or its wiring is damaged	Contact the manufacturer
Suction motor not working	Suction motor or its circuit is damaged	Contact the manufacturer
Poor water absorption	Wiper assembly clogged	Cleaning the Squeegee Assembly
	Squeegee blade wear	Turn over or replace
	The suction pipe is not reliably connected to the wiper assembly	Reliable connection of suction pipe
	Suction pipe clogged	Clear blockage
	Damaged suction pipe	Replace the suction hose
	Sewage tank cover is not closed	Covered
	Damaged waste water tank cover seal	Replace the seal
	Suction motor damaged	Contact the manufacturer
	Battery is low	Charge the battery
Short runtime	Damaged battery charger	Repair or replace the charger

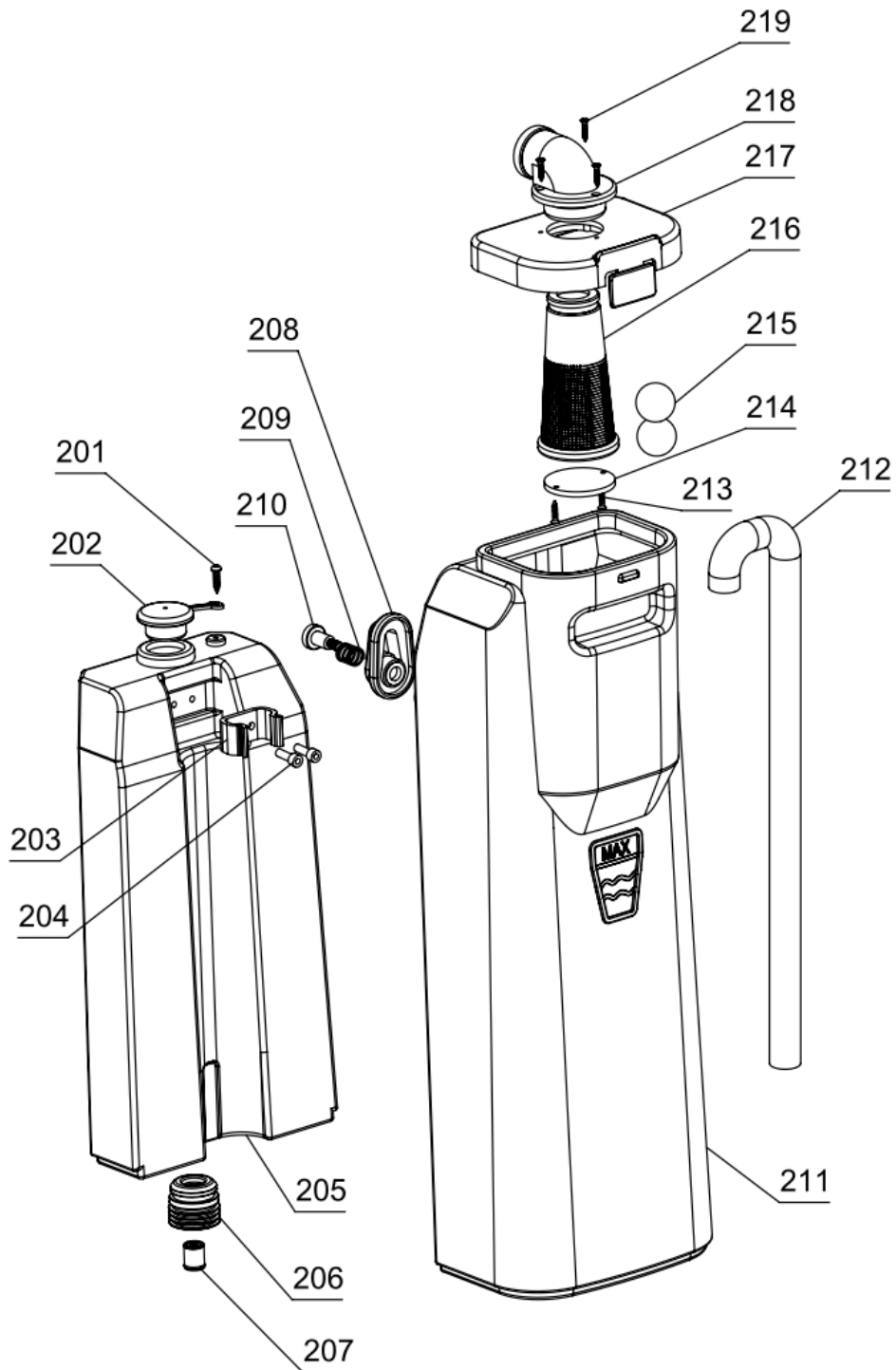
Explosion diagram 1



Number	Name	Number	Name	Number	Name
101	Handle case upper case	102	Control circuit board	103	3X8 pan head self-tapping screws
104	Handle case lower case	105	4X16 pan head self-tapping screws	106	M6X16 cylinder head screw
107	4X30 pan head self-tapping screws	108	Handle connector (rear)	109	4X30 pan head self-tapping screws

110	Handle attachment (front)	111	Water tank locator	112	M6X16 round head screw
113	40X2 aluminum handle	114	M6X16 round head screw	115	Electric wire
116	M6X16 cylinder head screw	117	Sewage tank suction liner	118	M6 round head nut
119	Aluminum tube closure	120	Wire sheath		

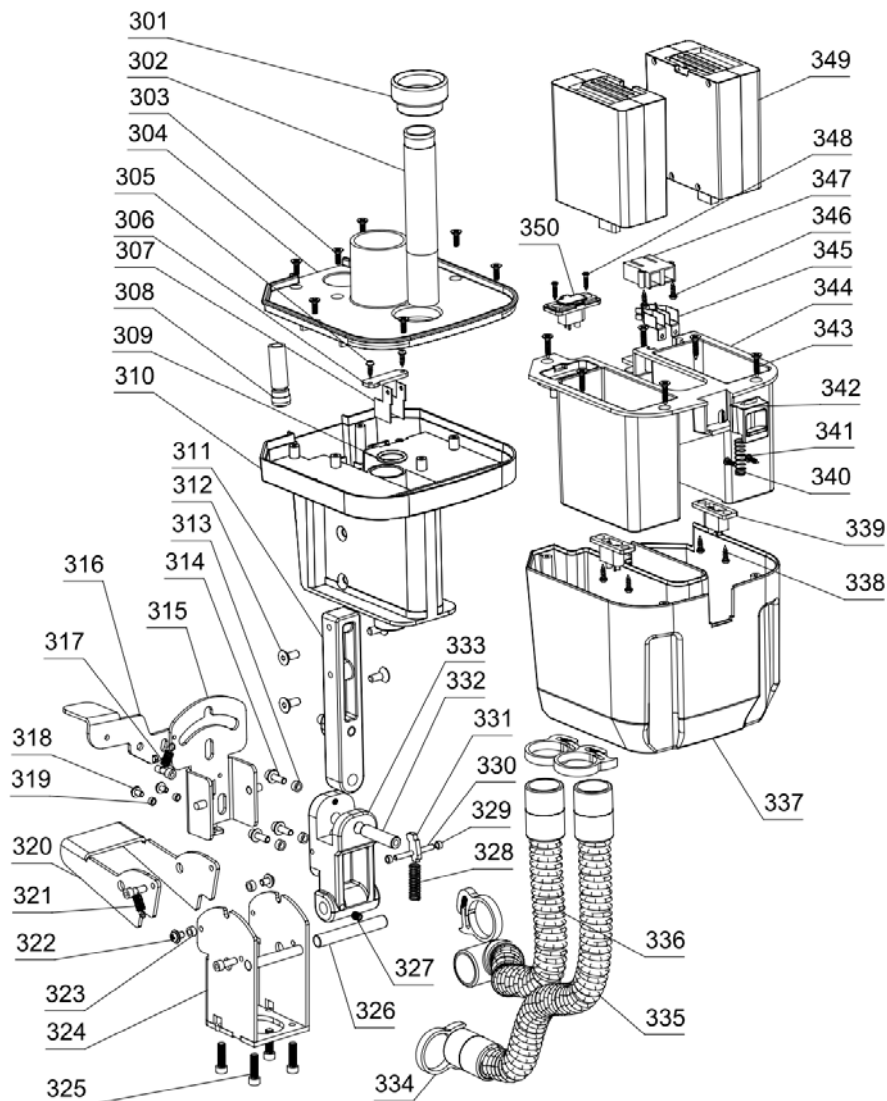
**Explosion diagram 2**



Number	Name	Number	Name	Number	Name
--------	------	--------	------	--------	------

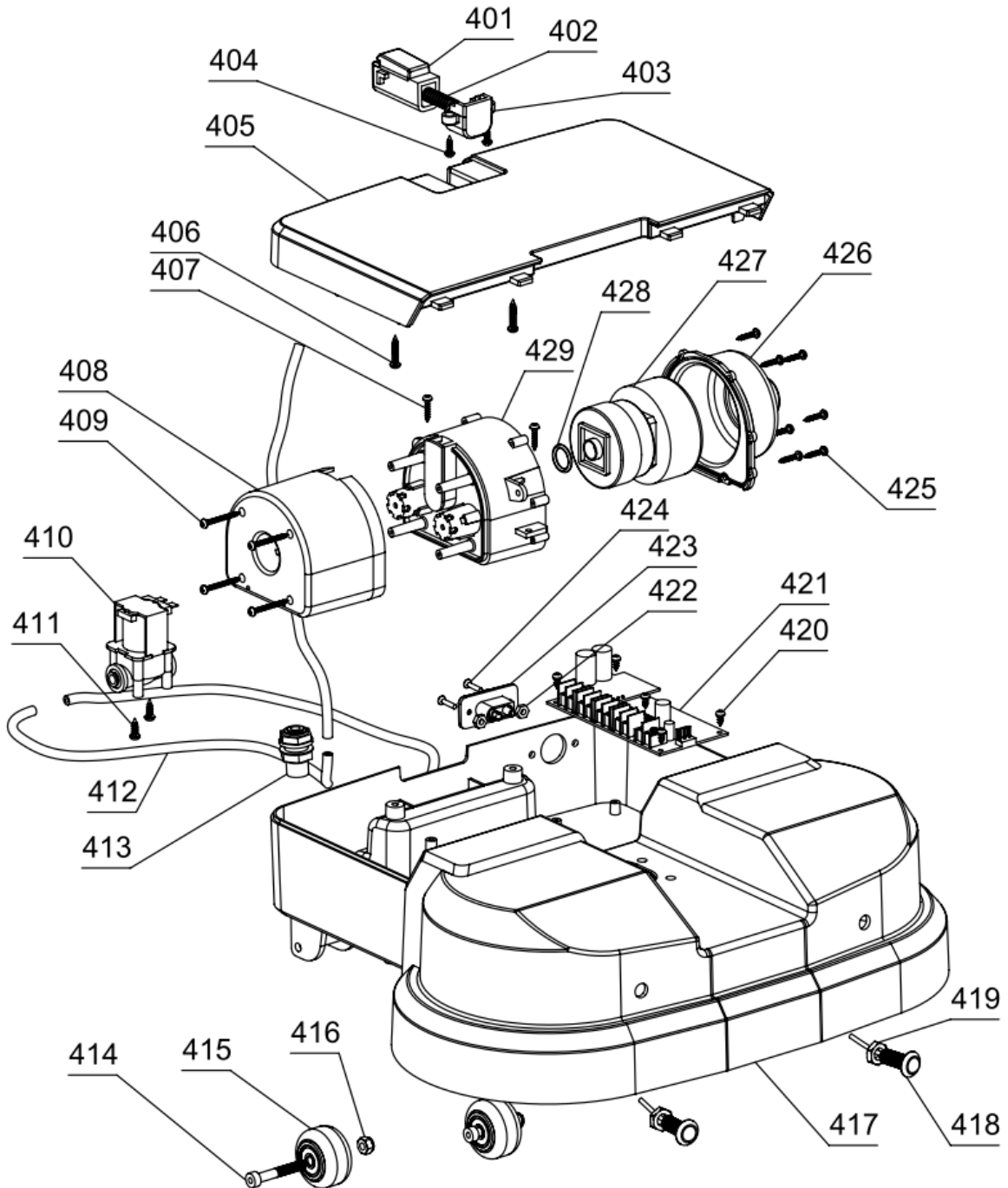
201	4X16 pan head self-tapping screws	202	Clean water tank cover	203	Clean water tank buckle
204	M5X12 M5X12 round head screw	205	Clean water tank	206	Water valve rubber sleeve
207	Water valve	208	Sewage tank swing buckle	209	Water tank swing buckle spring
210	Water tank swing buckle screw	211	Waste water tank	212	Sewage tank inner elbow
213	3X12 countersunk head self-tapping screw	214	Bottom cover of float cover	215	Float
216	Float cover	217	Sewage tank cover	218	Sewage tank extraction jacket
219	3X12 countersunk head self-tapping screw				

**Explosion diagram 3**



Number	Name	Number	Name	Number	Name
301	Sewage tank connection rubber sleeve	302	Rubber sleeve connecting pipe	303	4X12 Countersunk head self-tapping screw
304	Water tank pallet	305	3X12 pan head self-tapping screws	306	Battery insert press plate
307	Battery insert	308	Conversion quick connector	309	O-ring 19 (inner) X3
310	Battery Holder	311	Universal joint upper part	312	M6X12 countersunk head screw
313	5X8X4 cushion cover	314	M5X12 screw	315	Vertical lock
316	Vertical lock locking rocker	317	7X0.8X27 extension spring	318	M4X8 screw
319	4X6X3 cushion cover	320	Unlock rocker	321	7X0.8X27 Extension spring
322	M5X8 screw	323	5X8X4 cushion cover	324	Universal joint lower part
325	M6X20 cylinder head screw	326	10X70 pin	327	M6X8 Machine screw
328	9X1X40 compression spring	329	4X6X4 cushion cover	330	4X40 pin
331	Standing latch unlocking position	332	8X40 pin	333	Universal joint middle section
334	Hose clamp	335	Suction hose	336	uction hose
337	Battery case	338	3X10 pan head self-tapping screws	339	Battery plug
340	8X0.6X30 compression spring	341	3X10 pan head self-tapping screws	342	Battery compartment lock
343	4X16 countersunk head self-tapping screw	344	Battery compartment cover	345	Battery compartment plug copper parts
346	3X12 pan head self-tapping screws	347	Battery compartment plug	348	3X12 countersunk head self-tapping screw
349	Battery	350	Charging socket		

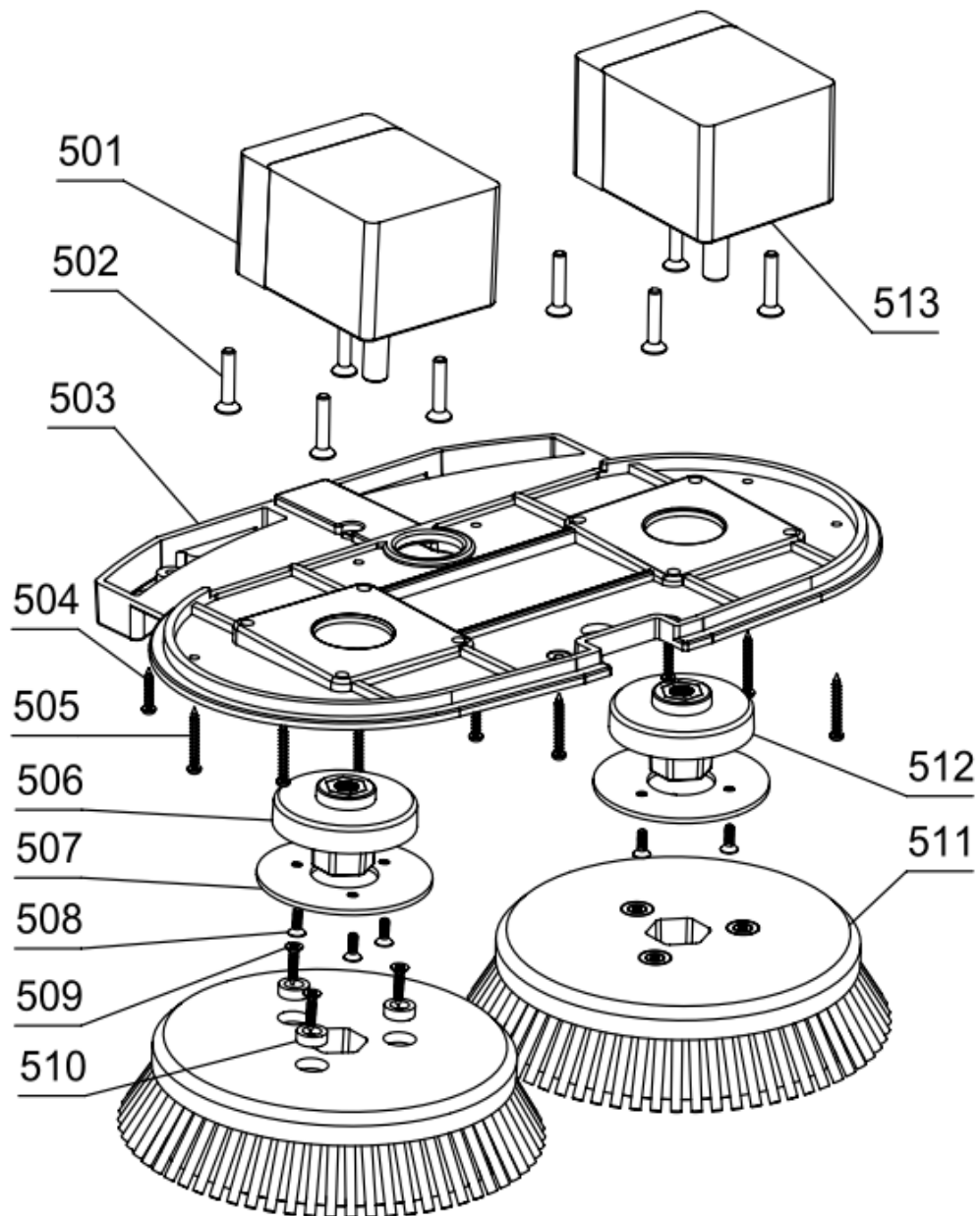
Explosion diagram 4



Number	Name	Number	Name	Number	Name
401	Folding buckle	402	9X1X40 compression spring	403	Folding Buckle Positioner
404	3X12 pan head self-tapping screws	405	Chassis cover	406	4X20 pan head self-tapping screws
407	4X20 pan head self-tapping screws	408	Suction Motor Noise Cover 2	409	3X30 pan head self-tapping screws
410	Electromagnetic valve	411	4X12 pan head self-tapping screws	412	Water pipe
413	6.3 water pipe quick connector	414	M6X40 cylinder head screw	415	φ40X23 wheel

416	M6 fasten the screw nut	417	Host shell	418	LED light
419	LED light nut	420	3X8 Pan head self-tapping screws	421	Main control circuit board
422	M3 nut	423	Charging socket	424	M3X12 countersunk head screw
425	3X16 pan head self-tapping screws	426	Suction Motor Mount	427	Suction motor
428	O-ring 14 (inner)X2.5	429	Suction Motor Noise Cover 1	430	

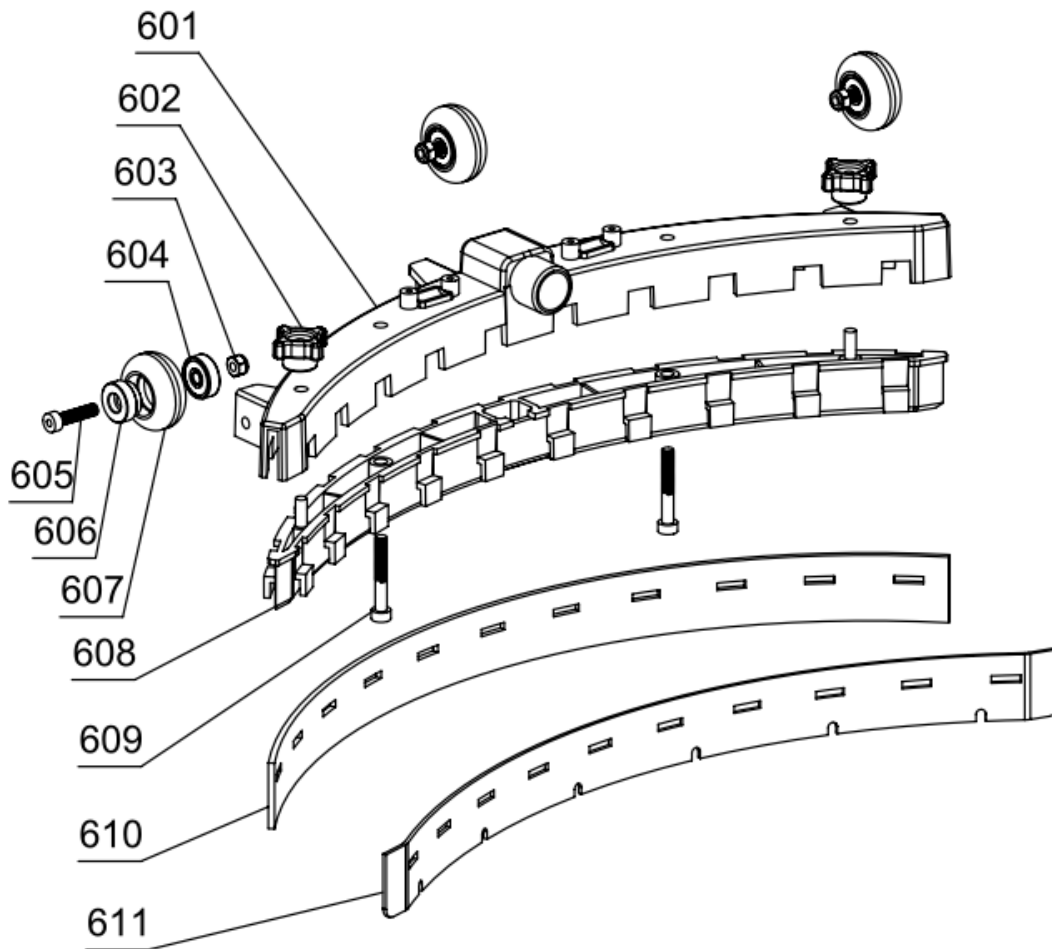
**Explosion diagram 5**



Number	Name	Number	Name
501	Left thread brush motor	502	M6X25、20 countersunk head screw

503	Brush plate motor bottom plate	504	4X12 pan head self-tapping screws
505	4X30 pan head self-tapping screws	506	Left thread brush buckle
507	Brush buckle magnetic sheet	508	4X12 countersunk head self-tapping screw
509	4X20 countersunk head self-tapping screw	510	Strong magnet $\phi 15 \times 5$
511	Brush plate	512	Right thread brush buckle
513	Right thread brush motor		

**Explosion diagram 6**



Number	Name	Number	Name
601	Squeegee shell	602	M6 star nut
603	M6 fasten the screw nut	604	606 Bearing
605	M6X25 cylinder head screw	606	Squeegee hub
607	40mm squeegee	608	Squeegee Internals
609	M6X40 cylinder head screw	610	Squeegee rear rubber strip
611	Squeegee front rubber strip		



Series product warranty card

Card number:

User name:

Contact number:

Contact address:

Post code:

Date of purchase:

Invoice number:

Product model:

Machine number:

Replacement parts:

Fault description:

Distributor (official seal)

1. This warranty card must be stamped with the official seal of the agent distributor to be valid.
2. This maintenance card is in duplicate, one for each customer and agent distributor.

★Warranty with purchase receipt, thank you for your cooperation!

Series product warranty card

Card number:

User name:

Contact number:

Contact address:

Post code:

Date of purchase:

Invoice number:

Product model:

Machine number:

Replacement parts:

Fault description:

Distributor (official seal)

3. This warranty card must be stamped with the official seal of the agent distributor to be valid.
4. This maintenance card is in duplicate, one for each customer and agent distributor.

★Warranty with purchase receipt, thank you for your cooperation!

**ARCORA®**  
**www.arcora-group.com**

---

Address: Marsstrasse 9, 85609 Aschheim near Munich

E-mail : [info@arcora.de](mailto:info@arcora.de) Tel :

+49 (0) 89 14 33 29 30

[www.arcora-group.com](http://www.arcora-group.com)

---