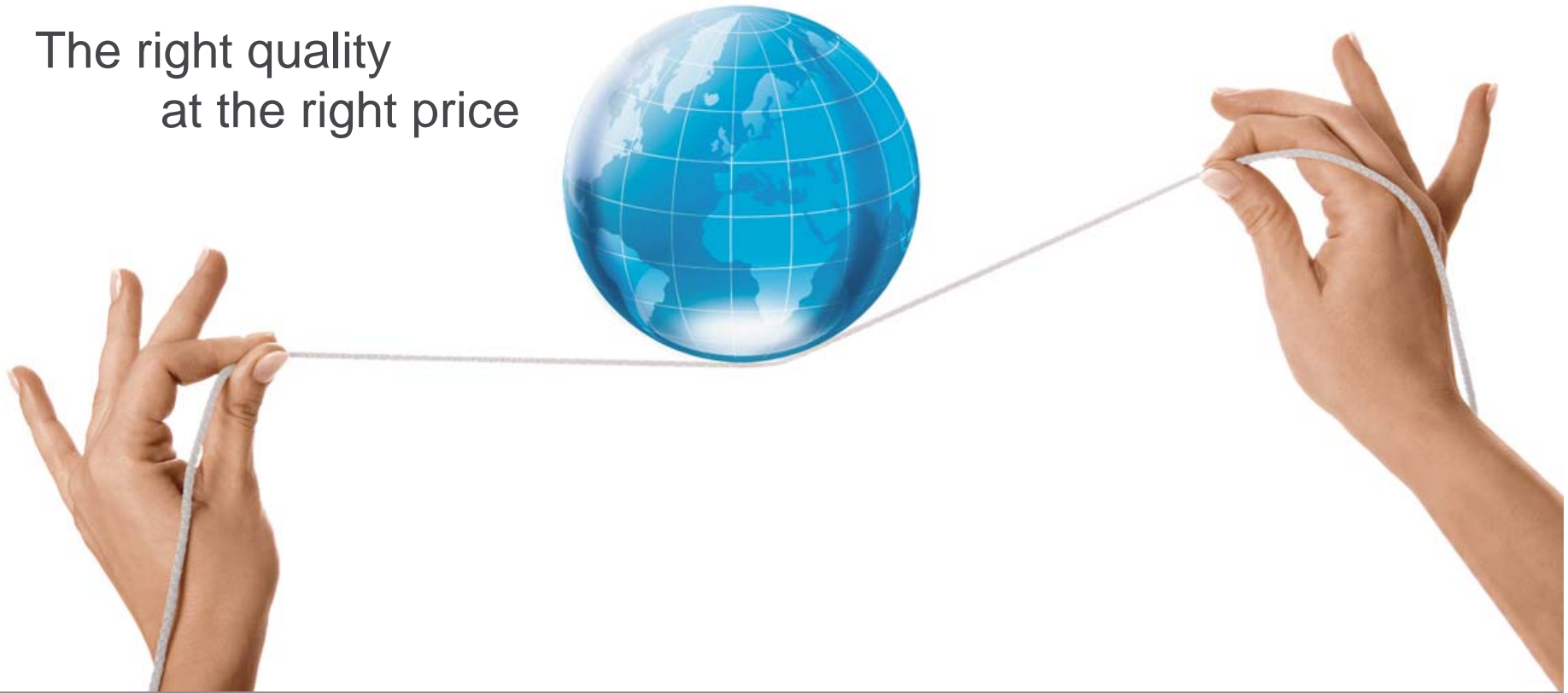


My50 E/B

AFFORDABLE
cleaning

The right quality
at the right price



My50, a fruit of Affordable Cleaning philosophy



**Low Price
High Quality**

- Scrubbing machine:*** Walk behind
Brush: 51/53/55 cm single brush
Traction: I-Traction system up to 3,5 Km/h
Supply: Electrically or battery powered
Autonomy: Up to 3 hours (Battery version)
Must: User-friendliness and easy maintenance

My50 E/B

Versatility

1
machine



3
solutions

brush of 51 cm



Squeegee of 68 cm



Deep and maintenance
cleaning of cluttered
environments up to 1700 sq.m

brush of 53 cm



Squeegee of 78 cm



Maintenance cleaning of
cluttered environments
up to 1850 sq.m

brush of 55 cm



Maintenance cleaning of
uncluttered environments
up to 2000 sq.m

My50 E/B

Downtime reduction

Easy water refill



Hose fill option offers spill free control or the traditional device

My50 is ideal for water-soluble single-dose detergent

Solution level control



Immediate control of the solution level in the tank

User-friendly control



My50 E/B

User-friendly

Squeegee movement



Squeegee can be easily lowered and lifted thanks to a handy lever

Brush controls



Brush is activated by two levers. The brush can be uncoupled by a switch

Simple to be transferred



The rear wheel facilitates machine transfer

Without training for the operator

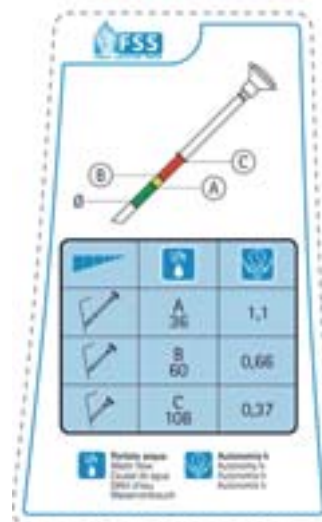
My50 E/B

User-friendly



For an ideal detergent amount Fimap suggests water-soluble single dose detergent

Device to control solution supply



System to adjust water consumption according to cleaning needs



Eco ON/OFF System: automatic machine is stationary (optional)

Break Away

Automatic squeegee uncoupling
when accidentally impacted,
avoiding any danger for
personnel

Besides, the squeegee with
double swinging movement
dries also on very narrow bends
(Only 68 cm of width with the
brush version of 51 cm)



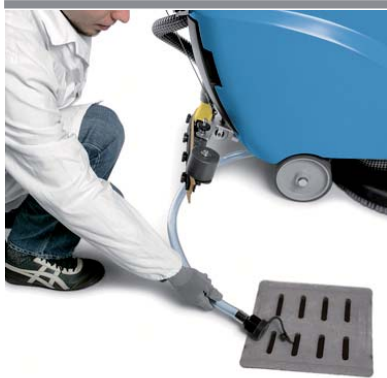
My50 E/B

Downtime reduction



The easy identification of the parts involved in the daily maintenance (with yellow colour) ensures all parts' check and sanitification at the end of work, guaranteeing the maximum efficiency of the machine

Tank cleaning



Hose for solution filling and draining



Recovery tank exhaust hose

Suction filter cleaning



Suction filter easy to access and to be cleaned

Without training for the personnel

My50 E/B

Downtime reduction



The easy identification of the parts involved in the daily maintenance (with yellow colour) ensures all parts' check and sanitification at the end of work, guaranteeing the maximum efficiency of the machine

Squeegee cleaning

On board battery charger



It allows to have the maximum suction efficiency



Squeegee blades can be used on the 4 edges.
Maintenance operations can be made without any tools



(Optional)

My50 E/B

Safety and maintenance



Components maximum accessibility

Watertight electrical system No water seepage



The electrical system is fully protected.
Maximum reliability in the
course of time



Batteries compartment



Suction motor
Brush motor

My50 E/B

Safety and maintenance



Corrosion-resistant materials



Injection moulded brush head for both battery and electrical version.



PATENT PENDING

Squeegee in reinforced plastic material

My50 E/B

Safety and maintenance

All the numbers of My50 B



My50 E/B

Comparison

										
TECHNICAL DATA		My50 B	My50 E	NILFISK CA531	NILFISK BA531	TENNANT T3 20"	KARCHER BD 55/40 CE	KARCHER BD 55/40 CB	HAKO B45	VIPER FANG20T
Working width	cm	51-53-55	51-53-55	53	53	51	55	55	51	51
Supply	V	24	220-230	220-230	24	24	220-240	24	24	24
Solution tank	l	40	40	40	40	40	40	40	42	50
Recovery tank	l	40	40	40	40	57	40	40	42	57
Machine dimensions (L x h x l)	cm	116,4 99,4 54,1	116,4 99,4 54,1	118 105 54	122 105 54	128 109 56	128 111 69	128 111 69	x56x	136 98 56
Squeegee width	mm	68-78	68-78	76	76	76	85	85	86	75
Brushes rpm	rpm	165	165	150	135	230	145	160	210	
Brushes pressure	kg	25	25	30	19/21	23-41	20	20		23
Brush motor	V/W	24/560	220/750	1100	480	750	1580	1200	720	560
Batteries (N.)	V/A	12/75Ah C5	-	-	12/110 Ah/C5	12/130/C20	-	12/105Ah C5	12/105 Ah	12/130 Ah
Total power	W	870	1200	1650	810	1120	1580	1200	1130	1060
Acoustic level	dB(A)	<65	<65	67,3	65,8	68,5				67

My50 E/B

Ownership of the information and/or documents:

All information (by which we mean all data and information with the sole exception of that of common knowledge or which FIMAP has disclosed without reserve) and all documents (drawings, photos, etc.) are the exclusive property of FIMAP and their use does not mean there is any kind of acquisition of titles, property or exploitation of rights or licences except for the limited permission of use ruled by this document.

By way of example and, therefore, not limited to, such information and/or documents can be the following:

Marketing section:

high definition digital images for the implementation of commercial catalogues on paper or web sites, company trademarks, original graphical documents from which texts are taken (e.g. the descriptive notes), PDF documents and original documents in .ppt format.

Professional use of the data:

It is a known fact that the information and/or documents, subject of this commitment, are and will be used by the beneficiary exclusively for carrying out his professional business and, therefore, no specific laws regarding consumer protection are applicable.

Confidentiality:

The Party that benefits from the information or use of documents taken from or, in any case, part of the commercial documentation, shall use all such information and/or documents with maximum care solely for the purposes connected to execution of this contract with FIMAP and shall:

keep such information and/or documents confidential except for those, due to their nature, which are to be disclosed (promo-advertising material etc.);

shall not divulge any information and/or document to its suppliers, collaborators or employees beyond what is strictly necessary so that they may fulfil their tasks concerning relations with FIMAP and shall ensure that the suppliers, collaborators and employees that have access to the information and/or documents are, in turn, bound by a confidentiality commitment to the benefit of FIMAP; shall not divulge any information to third parties without the prior written consent by FIMAP; copy and/or in any other way reproduce any information or document without the prior written consent of FIMAP; take all the necessary measures to protect confidentiality.

Returning Information and/or documents:

Whilst maintaining exclusive ownership at all times, FIMAP has the right, at any time, to ask in writing or by e-mail, that all the information and/or documents received be returned or no longer used and within the term of thirty days from receipt of this request, all the information and/or documents must be returned, including any copies, or destroy such information and/or documents and relative copies so as to prevent them from being recovered and FIMAP must be given a written declaration certifying that the information and/or documents have all either been returned or destroyed.

This obligation to return, destroy or no longer use is set automatically in motion when the relationship is cancelled with FIMAP for any reason whatsoever.

Applicable law, cancelling clauses and Court having jurisdiction:

The interpretation, integration, execution and the effects of this commitment will be governed by Italian law.

If one or more points of this agreement are cancelled it does not invalidate the remaining points.

All disputes will be put to the exclusive jurisdiction of the Verona Courts.