

LAVORWASH
SERVICE

LISTA RICAMBI

Codice R55091830-1
Descrizione TANK

Data inizio 14/4/2010
Data fine 1/1/3000
Tavola E55091830-01

Pos.	Codice	Prezzo	Q.ta per conf.	Qta.	Descrizione	Alternative	Prezzo	C
001	5.511.1689	49.16	1	2	ASSIEME RUOTA DI TRASPORTO POSTERIORE - ALCOR-SPEED		0	0
004	5.511.1678	59.36	1	1	ASSIEME RUOTA PARACOLPI ALCOR-SPEED		0	0
005	5.511.1677	140.94	1	1	ASSIEME ASSE RUOTE ALCOR-SPEED		0	0
006	5.511.1675	113.46	1	1	KIT ELETTROVALVOLA CON FILTRO24V ALCOR-SPEED		0	0
007	5.511.1674	67.3	1	1	ASSIEME RUBINETTO ALCOR-SPEED		0	0
008	3.403.0043	24.34	1	1	INDICATORE DI LIVELLO 24V/230VC/ROND. TRASP. E GHIERA -	5.511.1228	32.63	1
009	5.511.0535	24.82	1	1	ASSIEME TUBO ASPIRAZIONE L=1300		0	0
010	5.209.0089	10.92	2	2	GANCIO COMPLETO '06 X FUSTO ASPIRATORI PROFESSIONALI		0	0
011	4.513.0383	27.55	1	1	CARTER SPAZZOLA D.430 - SPEED		0	0
012	4.508.1469	10.17	2	1	INSONORIZZATORE SERBATOIO ALCOR-SPEED		0	0
013	4.508.1457	6.88	3	1	TAPPO CON FILTRO - ALCOR-MIZARSPEED-NEXT		0	0
014	4.508.1078	101.83	1	1	PANNELLO DI CHIUSURA POSTERIORE - SPEED		0	0
015	4.508.1076	11.02	2	1	CESTELLO DI RACCOLTA - SPEED/NEXT		0	0
016	3.499.0394	10.1	2	1	CAVO ALIMENTAZIONE SCHUKO L=1mt		0	0
018	4.508.0689	1	20	2	ASSE FISSAGGIO RUOTE		0	0
020	4.507.1349	5.3	4	1	STAFFA PER CAVO DI COLLEGAMENTO - NEXT ESP.B		0	0
021	4.507.1360	10	2	1	SQUADRETTA REGGICAVO ACQUA - SPEED		0	0
024	4.507.1336	10	2	1	STAFFA CAVO SOLLEVAMENTO SQG -SPEED		0	0
026	4.505.0237	3.03	7	1	CHIUSURA PER CONTAORE		0	0
028	3.752.0227	47	1	1	TUBO SCARICO-LIVELLO DETERGENTE - SPEED		0	0

Codice R55091830-1

Data inizio 14/4/2010

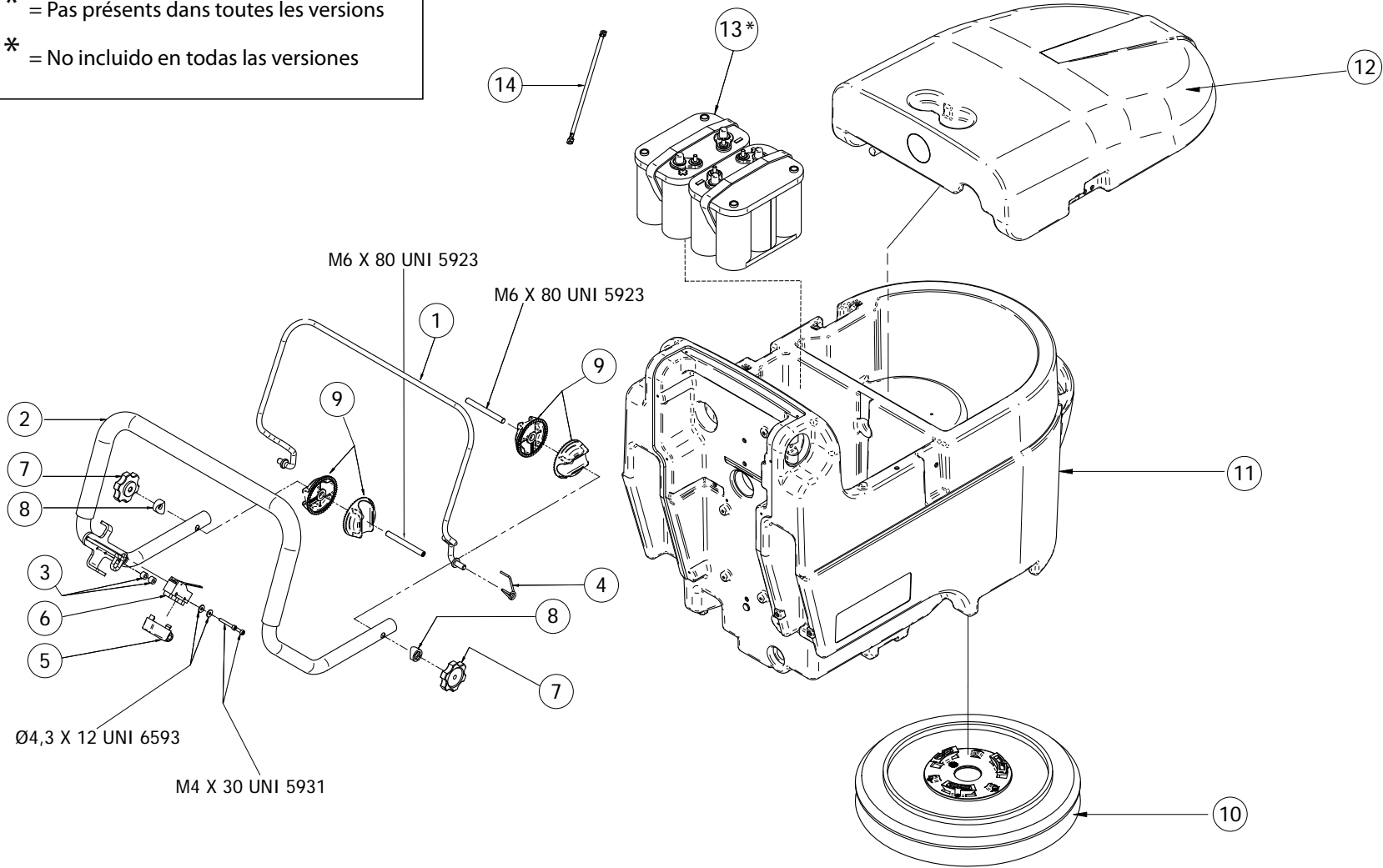
Descrizione TANK

Data fine 1/1/3000

Tavola E55091830-01

Pos.	Codice	Prezzo	Q.ta per conf.	Qta.	Descrizione	Alternative	Prezzo	C
029	3.752.0229	48.6	1	1	TUBO SCARICO CON TAPPO - SPEED		0	0
030	3.100.0356	6.94	3	1	RACCORDO PORTAGOMMA 90 G3/4 D.22		0	0
031	3.099.1553	10	2	1	FERMAGLIO FERMATUBI D.38 - COLORE NERO		0	0
032	3.099.1723	33.39	1	1	COMANDO ACQUA COMPLETO DI RINVIO SENZA FORCELLA -		0	0
033	3.099.1537	33.75	1	1	CAVO CON GUAINA COMANDO SQG -SPEED		0	0
034	3.099.1536	5	4	1	IMPUGNATURA ROSSA D=15 L=40		0	0
035	3.099.1535	4	20	1	TAPPO A TESTA PIANA D=51.5		0	0
036	3.099.1517	4	20	1	TAPPO UNIVERSALE D=15-17.5 SP=0.8-3.2		0	0
037	3.099.1409	1.16	18	1	CLIP FERMATUBO D.25		0	0
056	5.511.1727	290	1	1	KIT CARICABATTERIE ALCOR-SPEED		0	0
060	3.099.1193	0.35	60	2	TAPPO COPRIFORO IN GOMMA NERO		0	0
063	3.099.1581	0.5	40	1	FASCETTA FERMACAVI D.9.5		0	0
070	4.506.0269	4	20	4	DISTANZIALE CARTER SPAZZOLA ALCOR-SPEED	4.508.0316	1.98	1
071	4.507.1403	12.71	2	1	BATTUTA PER MOTORE (ALCOR-SPEED)		0	0
072	3.099.1628	23	1	1	VITE DI PRESSIONE M6X45		0	0

* = Non incluso in tutte le versioni
 * = Not included in all versions
 * = Pas présents dans toutes les versions
 * = No incluido en todas las versiones



Pos.	Code	Substituted by	Q.ty	Purchasable	Min. Q.ty	For mainten.	Description
001	5.513.0262		1	Yes	1		CONTROL LEVER
002	5.513.0261		1	Yes	1		HANDLE
003	4.508.1461		2	Yes	12		SPACER
004	4.507.1338		1	Yes	2		SPRING
005	3.401.0176		1	Yes	3	EXT	CONNECTION PROTECTION
006	3.401.0199		1	Yes	1	EXT	MICROSWITCH
007	3.099.1566		2	Yes	3		KNOB
008	3.099.1534		2	Yes	4		SPACER FOR KNOB D.22
009	3.099.1533		4	Yes	5		HANDLE REGULATOR D.22
010	5.511.1688		1	Yes	1	ORD	BRUSH
011	4.508.1477		1	Yes	1		ALCOR-SPEED RECOVERY TANK LIGHT GREY
012	4.508.1073		1	Yes	1		VACUUM CAP
013	0.107.0061		2	Yes	1	EXT	GEL BATTERY 12V MFP 50 -65 AhC-20/50 Ah C-5
014	5.511.0673		1	Yes	2		CONNECTION WIRING ASSY BATTERY



FLOOR SCRUBBER DRIER SCL SPEED45B CBT+2xVRLA LWS

Content filters: validity 05/10/2017

05/10/2017

8.524.0002 - FLOOR SCRUBBER DRIER SCL SPEED45B CBT+2xVRLA LWS..... 3

 R55091823-1 - BRUSH PLATE ASSY..... 4

 R55091827-1 - HOOD PARTS..... 6

 R55091829-2 - SQUEEGEE ASSEMBLY..... 8

 R55091830-1 - TANK..... 10

 R55111673-1 - BRUSH PLATE COMPONENTS..... 13

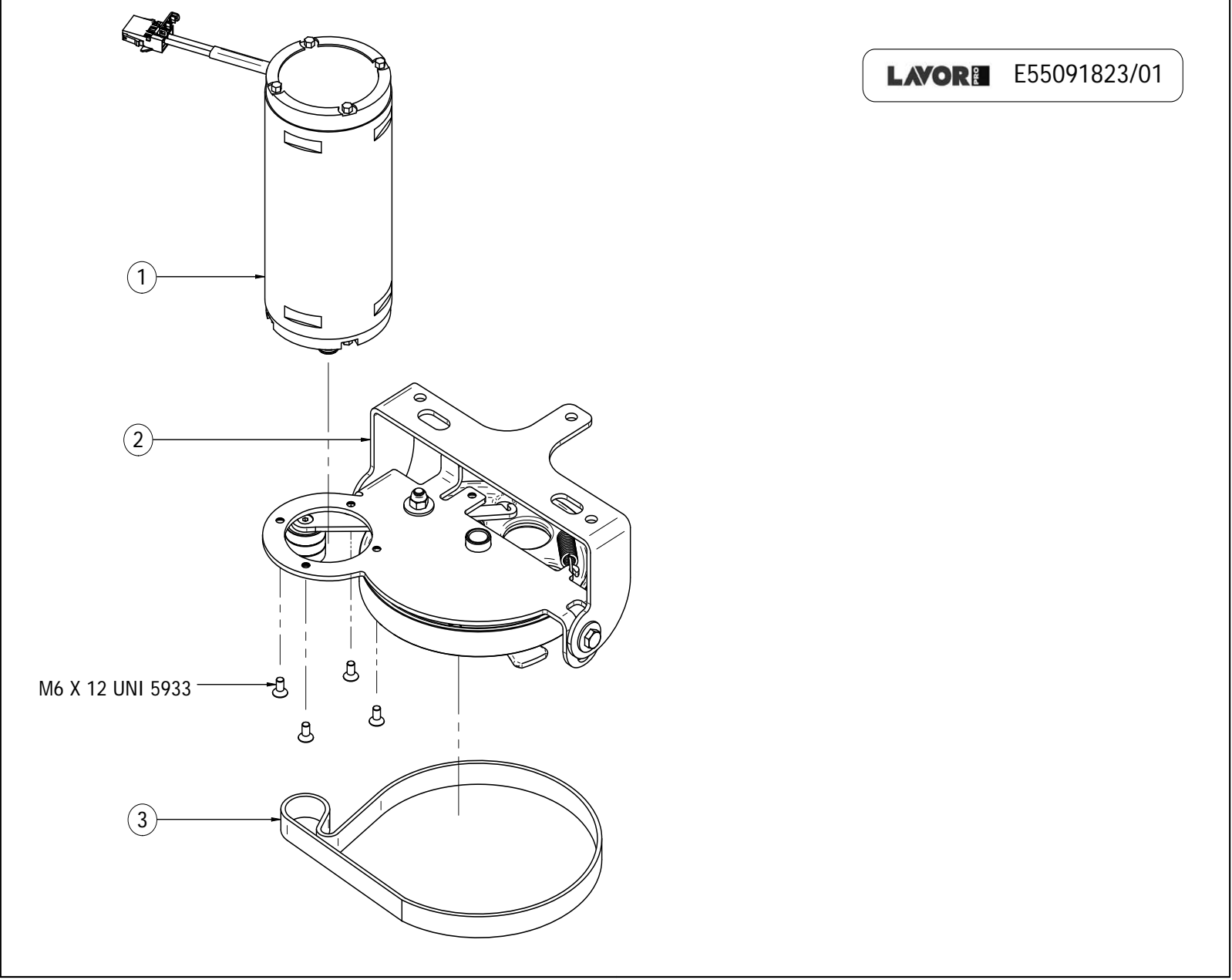
 R55111675-1 - SOLENOID VALVE ASSY..... 15

 R55111677-1 - AXLE..... 17

 R55111686-1 - DASHBOARD..... 19

 R85240002-1 - ACCESSORIES/COMPONENTS..... 21

Pos.	Code	Description
0	R55091823-1	BRUSH PLATE ASSY
0	R55091827-1	HOOD PARTS
0	R55091829-2	SQUEEGEE ASSEMBLY
0	R55091830-1	TANK
0	R55111673-1	BRUSH PLATE COMPONENTS
0	R55111675-1	SOLENOID VALVE ASSY
0	R55111677-1	AXLE
0	R55111686-1	DASHBOARD
0	R85240002-1	ACCESSORIES/COMPONENTS

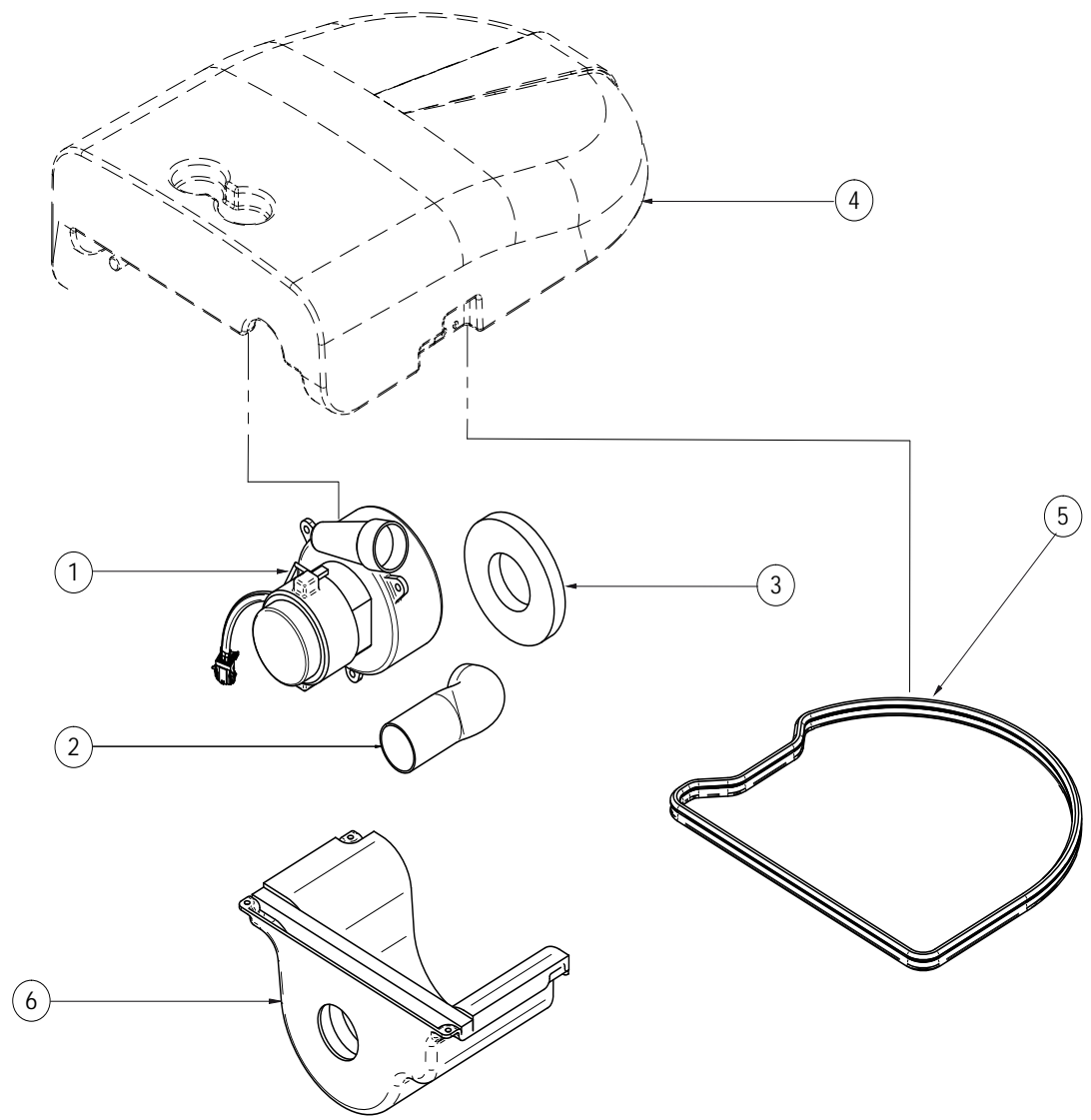


FLOOR SCRUBBER DRIER SCL SPEED45B CBT+2xVRLA LWS - Content filters: validity 05/10/2017

R55091823-1 - BRUSH PLATE ASSY

Validity: from 14/04/2010 to 01/01/3000

Pos.	Code	Substituted by	Q.ty	Purchasable	Min. Q.ty	For mainten.	Description
001	5.511.1692		1	Yes	1	EXT	BRUSH MOTOR 24V
002	5.511.1673		1	Yes	1		BRUSH PLATE COMPONENTS
003	3.099.1394		1	Yes	1	EXT	BRUSH BELD

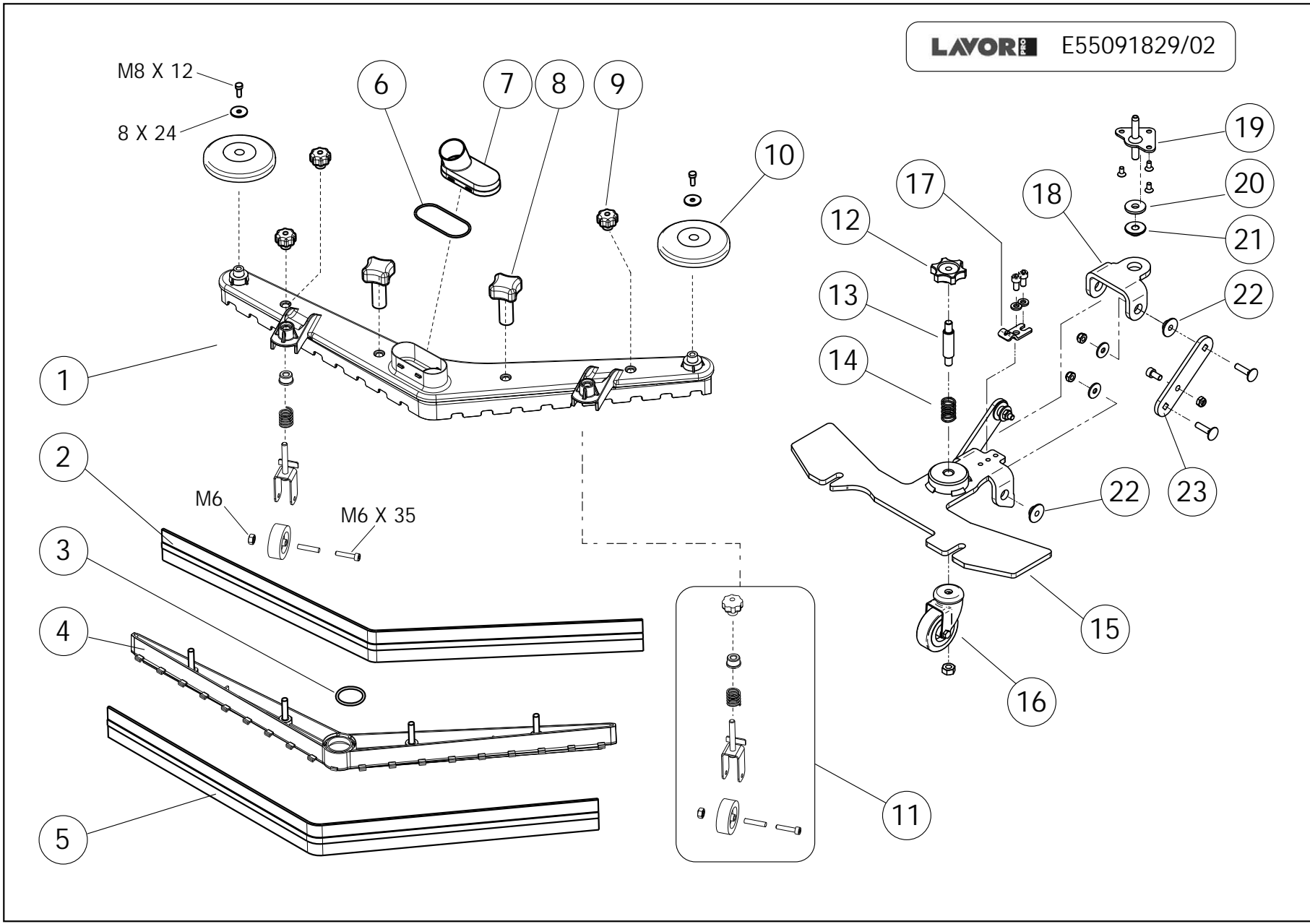


FLOOR SCRUBBER DRIER SCL SPEED45B CBT+2xVRLA LWS - Content filters: validity 05/10/2017

R55091827-1 - HOOD PARTS

Validity: from 14/04/2010 to 01/01/3000

Pos.	Code	Substituted by	Q.ty	Purchasable	Min. Q.ty	For mainten.	Description
001	3.755.0094	3.755.0112	1	No		EXT	VACUUM MOTOR 24V
002	4.508.1462		1	Yes	2	EXT	WASTE HOSE
003	4.508.0163		1	Yes	2		GASKET FOR SUCTION MOTOR
004	4.508.1073		1	Yes	1		VACUUM CAP
005	4.508.1088		1	Yes	1	EXT	GASKET FOR VACUUM CAP
006	5.511.1682		1	Yes	1		COMMON PARTS COVER GROUP FOR ALCOR-SPEED-NEXT-MIZAR



FLOOR SCRUBBER DRIER SCL SPEED45B CBT+2xVRLA LWS - Content filters: validity 05/10/2017

R55091829-2 - SQUEEGEE ASSEMBLY

Validity: from 08/03/2012 to 01/01/3000

Pos.	Code	Substituted by	Q.ty	Purchasable	Min. Q.ty	For mainten.	Description
001	4.505.0866		1	Yes	1		SQUEEGEE L=780 MM SANDBLAST AND CATAPHORESIS TREATMENT
002	4.508.X468		1	Yes	2	ORD	FRONT SQUEEGEE BLADE L.830 TH.2,5
003	3.200.0168		1	Yes	12		O-RING 4143
004	4.508.0505		1	Yes	1		SQUEEGEE BLADES HOLDER
005	4.508.X467		1	Yes	2	ORD	REAR SQUEEGEE BLADE L.870 TH.3
006	3.200.0172		1	Yes	12		O-RING 3275
007	4.508.1552C	6.505.0056	1	Yes	3		SQUEEGEE SUCTION COMPARTMENTCOVER
008	3.099.1265		2	Yes	4		KNOB D.52 M8
009	3.099.0467		4	Yes	2		KNOB M8
010	4.508.0224		2	Yes	2	EXT	BUMPER WHEEL D.110 GREY
011	5.511.1823		2	Yes	1	EXT	SQUEEGEE WHEEL ASSEMBLY
012	3.099.1189		1	Yes	5		KNOB M8 H26
013	4.507.1385		1	Yes	3		ADJUSTING PIN
014	4.507.1076		1	Yes	12		SPRING
015	5.513.0272		1	Yes	1		SQUEEGEE SUPPORT
016	3.006.0076		1	Yes	2	EXT	SQUEEGEE WHEEL (D.50)
017	4.507.1336		1	Yes	2		BRACKET FOR SQUEEGEE CABLE
018	4.507.1421		1	Yes	0		SQG SUPPORT PLATE
019	5.513.0271		1	Yes	1		SMALL PLATE FOR SQUEEGEE
020	4.507.0344		1	Yes	4		WASHER
021	4.508.1467		1	Yes	5		BUSHING
022	4.508.1468		4	Yes	3		BUSH
023	4.507.1384		2	Yes	2		CONNECTION PLATE (SQUEEGEE SUPPORT-SQUEEGEE SUPPORT PLATE)

Pos.	Code	Substituted by	Q.ty	Purchasable	Min. Q.ty	For mainten.	Description
001	5.511.1689		2	Yes	1		WHEEL ASSEMBLY
004	5.511.1678		1	Yes	1		WHEEL
005	5.511.1677		1	Yes	1		AXLE WITH WHEELS
006	5.511.1675		1	Yes	1	EXT	SOLENOID VALVE WITH FILTER 24V
007	5.511.1674		1	Yes	1		TAP SET
008	3.403.0043	5.511.1228	1	Yes	1	EXT	FLOATING SWITCH
009	5.511.0535		1	Yes	1	EXT	SUCTION HOSE ASSEMBLY
010	5.209.0089		2	Yes	2	EXT	COMPLETE LOCKER FOR PROFESSIONAL VACUUM CLEANER
011	4.513.0383		1	Yes	1		BRUSH COVER
012	4.508.1469		1	Yes	2		SOUNDPROOFING MATERIAL
013	4.508.1457		1	Yes	3		CAP WITH FILTER
014	4.508.1078		1	Yes	1		REAR COVER
015	4.508.1076		1	Yes	2		SMALL BASKET
016	3.499.0394		1	Yes	2	EXT	MAIN POWER CABLE L=1 MT WITH SCHUKO PLUG
018	4.508.0689		2	Yes	12		FIXING WHEEL AXLE - SWIFT B
020	4.507.1349		1	Yes	3		BRACKET
021	4.507.1360		1	Yes	2		BRACKET
024	4.507.1336		1	Yes	2		BRACKET FOR SQUEEGEE CABLE
026	4.505.0237		1	Yes	5		CAP
028	3.752.0227		1	Yes	1	EXT	UNLOADER HOSE FOR SOLUTION TANK
029	3.752.0229		1	Yes	1	EXT	UNLOADER HOSE FOR RECOVERY TANK
030	3.100.0356		1	Yes	3		JOINT 3/4 D.22
031	3.099.1553		1	Yes	2		HOSE HOLDER
032	3.099.1723		1	Yes	1	EXT	SOLUTION TAP LEVER
033	3.099.1537		1	Yes	1	EXT	SQUEEGEE CABLE
034	3.099.1536		1	Yes	3		HANDLE FOR SQUEEGEE LEVER
035	3.099.1535		1	Yes	12		CAP D=51,5
036	3.099.1517		1	Yes	12		CAP D=15-17,5 SP=0,8-3,2
037	3.099.1409		1	Yes	12		CLIPS
056	5.511.1727		1	Yes	1	EXT	BATTERY CHARGER 24V WITH CABLE
060	3.099.1193		2	Yes	12		STOPPER IN BLACK RUBBER

FLOOR SCRUBBER DRIER SCL SPEED45B CBT+2xVRLA LWS - Content filters: validity 05/10/2017



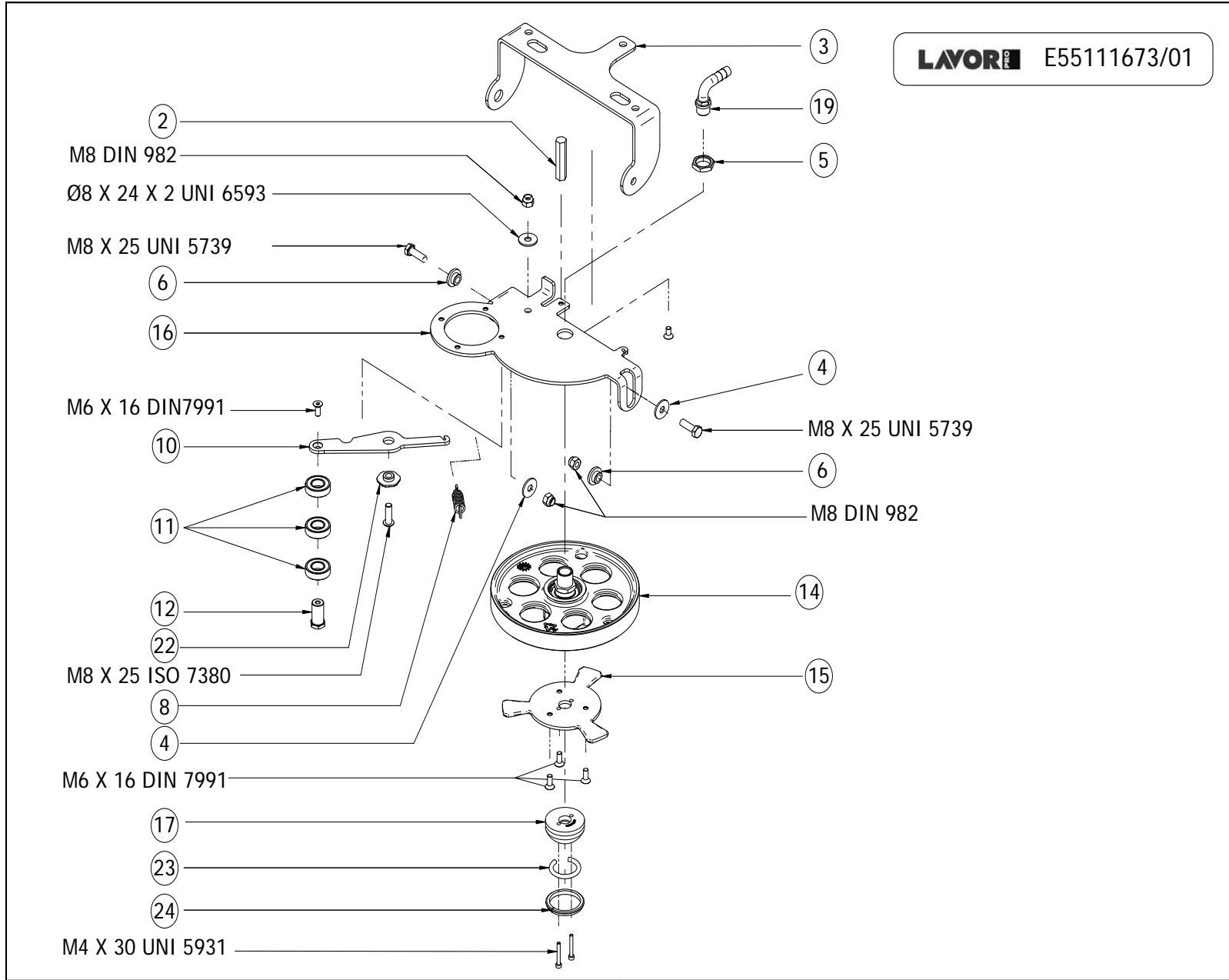
R55091830-1 - TANK

Validity: from 14/04/2010 to 01/01/3000

05/10/2017

Page 11 / 22

Pos.	Code	Substituted by	Q.ty	Purchasable	Min. Q.ty	For mainten.	Description
063	3.099.1581		1	Yes	12		CLAMP D.9,5
070	4.506.0269	4.508.0316	4	Yes	6		SPACER
071	4.507.1403		1	Yes	2		SUPPORT FOR MOTOR
072	3.099.1628		1	Yes	1		REGULATION SCREW M6X45

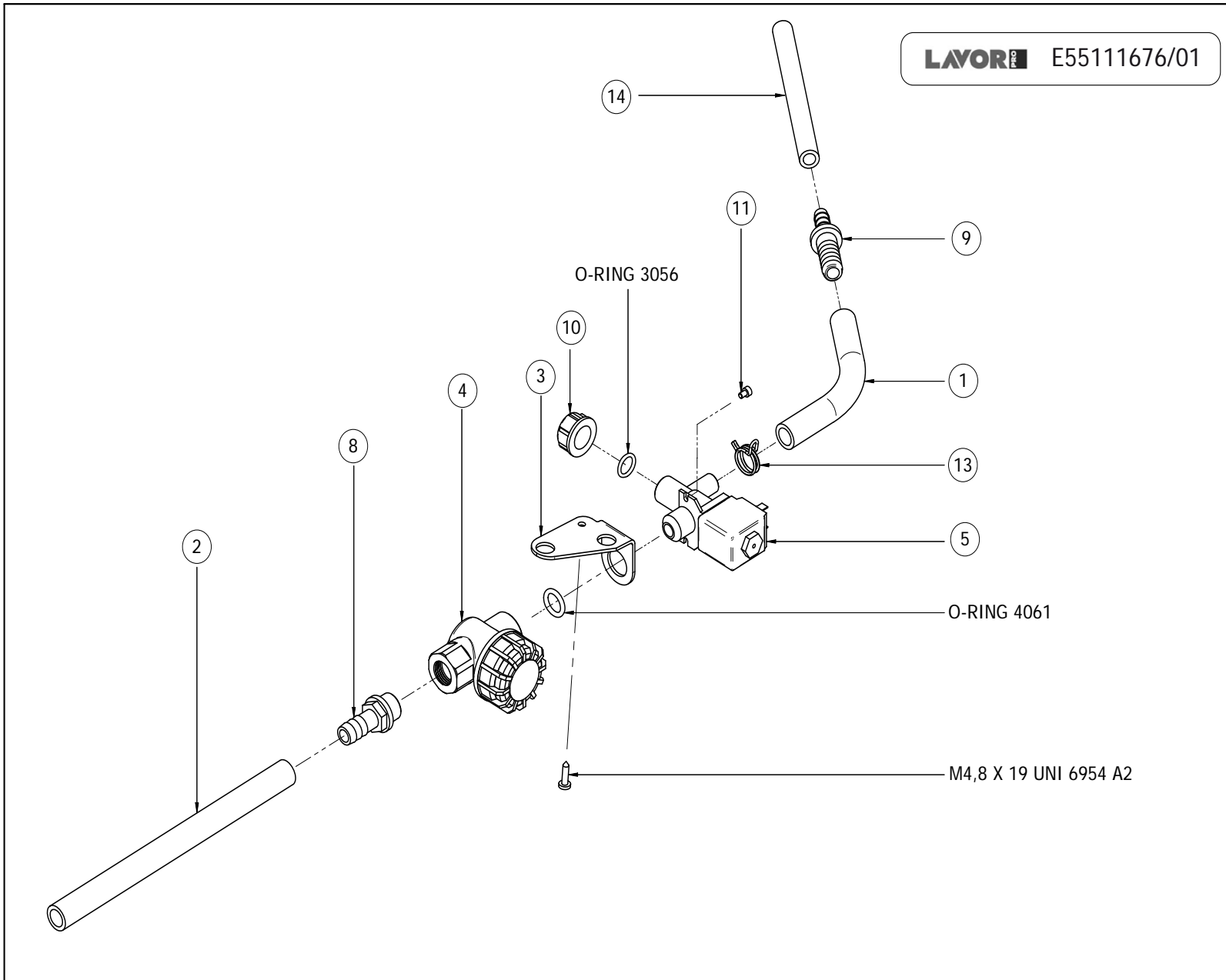


FLOOR SCRUBBER DRIER SCL SPEED45B CBT+2xVRLA LWS - Content filters: validity 05/10/2017

R55111673-1 - BRUSH PLATE COMPONENTS

Validity: from 14/04/2010 to 01/01/3000

Pos.	Code	Substituted by	Q.ty	Purchasable	Min. Q.ty	For mainten.	Description
003	4.507.1379		1	Yes	1		SUPPORT
005	4.507.1387		1	Yes	6		KNOB M20X1,5 H=6mm
006	4.506.0252		1	Yes	5		FIXING BUSH
008	4.507.1272		1	Yes	3		SPRING
010	4.507.1124		1	Yes	1		BELD LEVER
011	3.001.0032		3	Yes	4		BEARING 6002 2RS1
012	4.507.1127		1	Yes	2		BEARING SHAFT
014	5.511.1691		1	Yes	1		PULLEY ASSEMBLY
015	4.507.1370		1	Yes	1		BRUSH CONNECTION
016	4.507.1125		1	Yes	1		SWINGING SUPPORT
017	4.508.1449		1	Yes	2		BRUSH BALANCING
019	3.100.0386		1	Yes	3		HOSE JOINT 3/8M FOR HOSE D.12
022	4.506.0256		1	Yes	5		BELD LEVER BUSH
023	3.200.0127		1	Yes	2		O-RING D=5.34 L=106
024	4.508.0314		1	Yes	2		OPENED RING

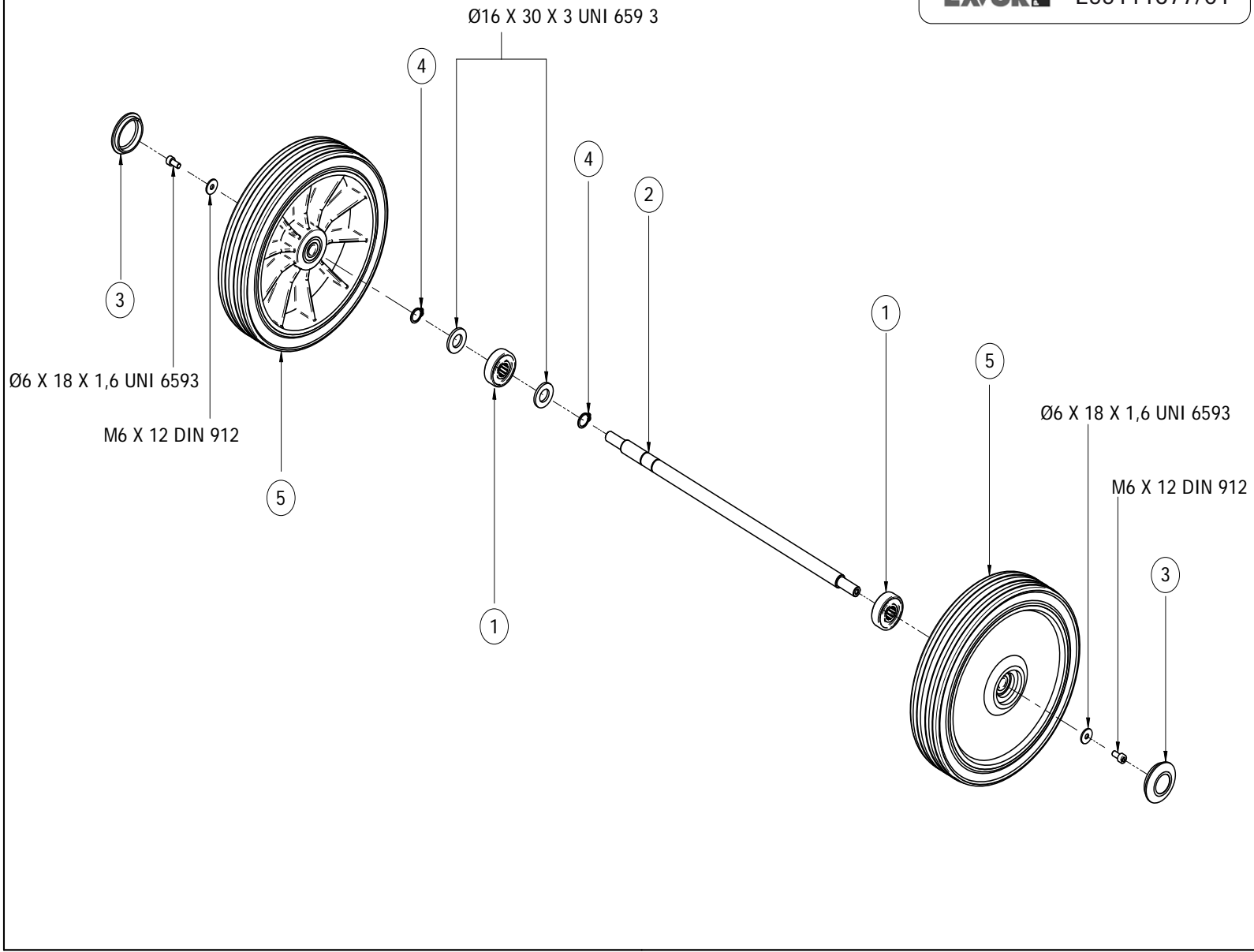


FLOOR SCRUBBER DRIER SCL SPEED45B CBT+2xVRLA LWS - Content filters: validity 05/10/2017

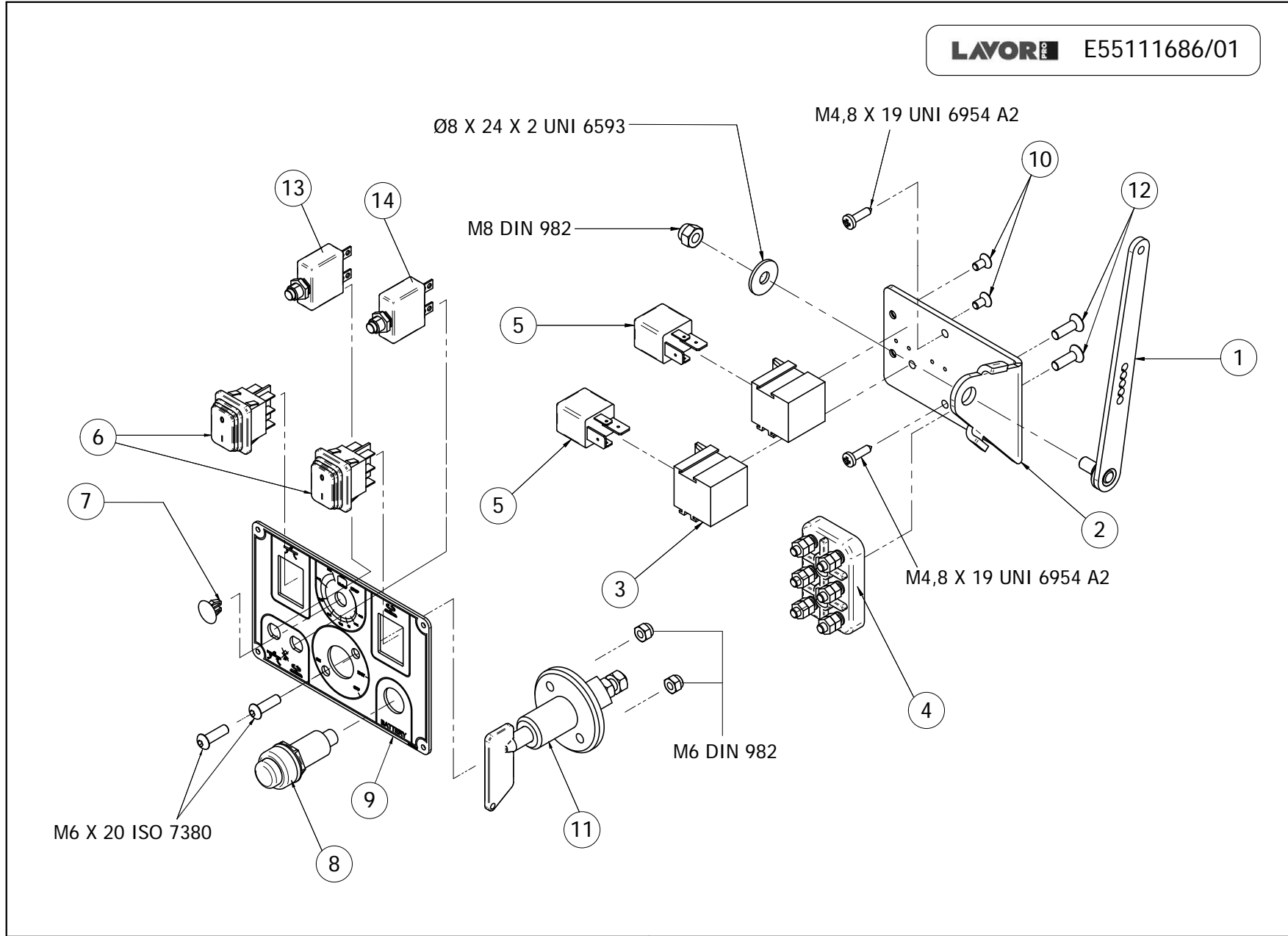
R55111675-1 - SOLENOID VALVE ASSY

Validity: from 14/04/2010 to 01/01/3000

Pos.	Code	Substituted by	Q.ty	Purchasable	Min. Q.ty	For mainten.	Description
001	4.508.1460		1	Yes	1		HOSE D.14 L=165mm
002	4.508.0881	3.099.0616	1	No			HOSE ARMONVILLE D.i=14 L=260
003	4.507.1332		1	Yes	2		FILTER SUPPORT
004	3.749.0299		1	Yes	1	ORD	F5 G1/2F/F WATER FILTER
005	3.412.0027		1	Yes	1	EXT	SOLENOID VALVE 1/2
008	3.100.0226		1	Yes	6		G1/2 RUBBERHOLDER COUPLING
009	3.100.0387		1	Yes	4		HOSE JOINT D.16-D.12
010	3.099.1032		1	Yes	6		CAP 1/2
013	3.099.1471		1	Yes	12		CLAMP D. 19,6-20,6
014	4.508.1463		1	Yes	2		HOSE D.10-D.16 L=165mm

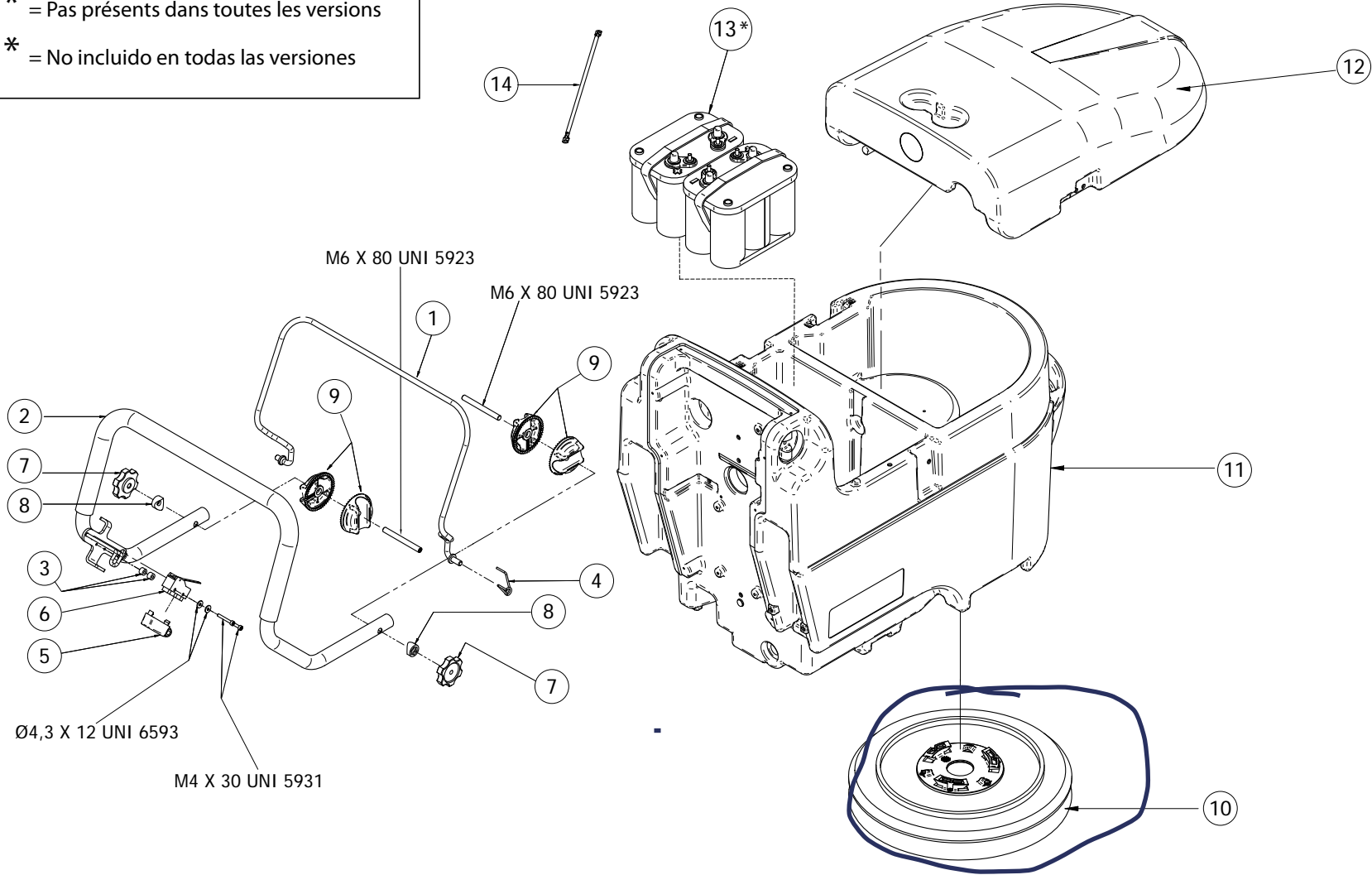



Pos.	Code	Substituted by	Q.ty	Purchasable	Min. Q.ty	For mainten.	Description
001	4.508.0687		2	Yes	12		AXLE SUPPORT - SWIFT B
002	4.507.1331		1	Yes	1		AXLE
003	3.099.1066		2	Yes	2		CAP FOR WHEEL - GREY
004	3.099.0872		2	Yes	12		SEEGER RING D.16 UNI 7435
005	3.006.0145		2	Yes	1	EXT	WHEEL D.250 L.50



Pos.	Code	Substituted by	Q.ty	Purchasable	Min. Q.ty	For mainten.	Description
001	5.513.0270		1	Yes	1		SQUEEGEE LEVER
002	4.507.1333		1	Yes	1		RELE' SUPPORT
003	3.410.0022		1	Yes	1		RELAY SUPPORT FOR CB1AH
004	3.405.0045		1	Yes	3		TERMINAL BOARD MEC584 70-45
005	3.402.0017		2	Yes	1	EXT	RELAY AUTOMOTIVE CB1AH-24V 70A
006	3.401.0189		2	Yes	2	EXT	SWITCH 0/I 24V
007	3.099.1513		1	Yes	12		CAP D=9.5-11 SP=0.8-3.2
008	3.403.0100		1	Yes	1	EXT	BATTERY CHARGE INDICATOR
009	4.505.0247		1	Yes	1		DASHBOARD
010	3.002.0800		2	Yes	12		SCREW M5 X 10
011	3.401.0162	3.401.0221	1	Yes	1	EXT	BATTERY MAIN SWITCH
012	3.002.0229		2	Yes	12		SCREW M6X20 INOX DIN 7991
013	3.401.0074		1	Yes	1	EXT	THERMAL CIRCUIT BREAKER 20A SM7200
014	3.401.0119		1	Yes	2	EXT	THERMAL CIRCUIT BREAKER 25A

* = Non incluso in tutte le versioni
 * = Not included in all versions
 * = Pas présents dans toutes les versions
 * = No incluido en todas las versiones



Pos.	Code	Substituted by	Q.ty	Purchasable	Min. Q.ty	For mainten.	Description
001	5.513.0262		1	Yes	1		CONTROL LEVER
002	5.513.0261		1	Yes	1		HANDLE
003	4.508.1461		2	Yes	12		SPACER
004	4.507.1338		1	Yes	2		SPRING
005	3.401.0176		1	Yes	3	EXT	CONNECTION PROTECTION
006	3.401.0199		1	Yes	1	EXT	MICROSWITCH
007	3.099.1566		2	Yes	3		KNOB
008	3.099.1534		2	Yes	4		SPACER FOR KNOB D.22
009	3.099.1533		4	Yes	5		HANDLE REGULATOR D.22
010	5.511.1688		1	Yes	1	ORD	BRUSH
011	4.508.1477		1	Yes	1		ALCOR-SPEED RECOVERY TANK LIGHT GREY
012	4.508.1073		1	Yes	1		VACUUM CAP
013	0.107.0061		2	Yes	1	EXT	GEL BATTERY 12V MFP 50 -65 AhC-20/50 Ah C-5
014	5.511.0673		1	Yes	2		CONNECTION WIRING ASSY BATTERY

.