



OPERATION INSTRUCTION

Running water clarification type

Water Cooler

Ref. 09001

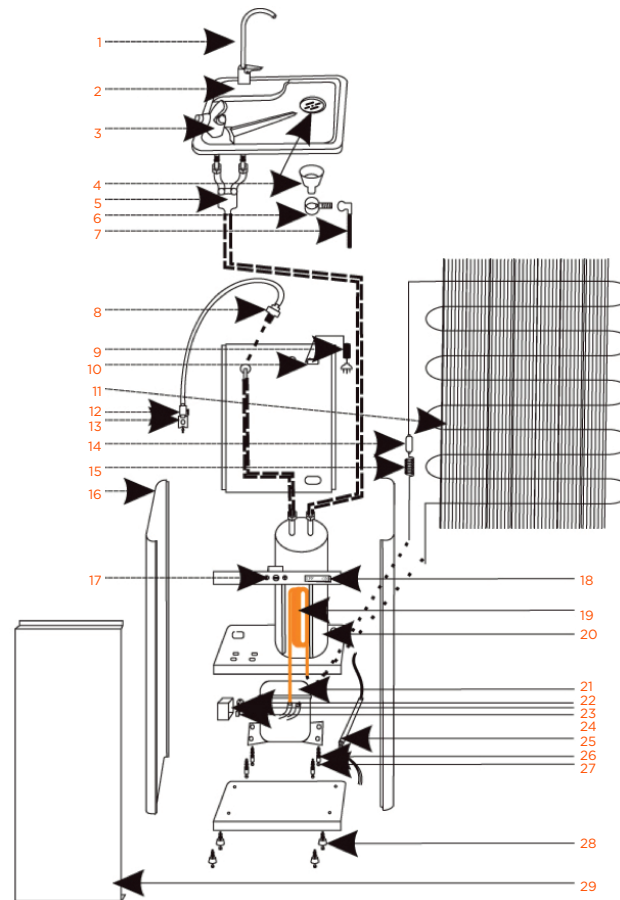
PRECAUTION

Don't connect the power until the water comes out after opening the water tap!

- Parts notes
- Manual instruction
- Operation and maintenance
- Installation
- Features
- Technical data
- Maintenance
- Annex list

Before installation, please read the booklet of directions in every detail so as to understand correct methods for installation and operation. please take care of this booklet of directions and the guarantee statement.

PARTS NOTES



- | | |
|--------------------------|----------------------|
| 1. Gooseneck tap | 15. Capillary tube |
| 2. Top cover | 16. Side pannel |
| 3. Drinking water tap | 17. Cold thermostat |
| 4. Water tray | 18. On/off button |
| 5. 3-way valve | 19. Evaporator |
| 6. Drainage elbow | 20. Cold tank |
| 7. Waste water pipe | 21. Compressor |
| 8. In -water screw cap | 22. Protector |
| 9. Plug line | 23. Starter |
| 10. Junction box | 24. Protective cover |
| 11. Condensor | 25. Wire |
| 12. Water tee connection | 26. Anti-shock pad |
| 13. Water inlet valve | 27. Bolt |
| 14. Dryness filter | 28. Rubber foot |
| | 29. Front pannel |

MANUAL INSTRUCTIONS

1. THIS DEVICE IS INTENDED TO BE USED IN DOMESTIC AND SILIAR APPLICATION.
2. THIS DEVICE CAN BE UISED BY CHILDREN WITH AGED 8YEARS AND PEOPLE WITH REDUCED PHYSICAL,SENSORY OR MENTAL ABILITIES OR LACK OF EXPERIENCE AND KNOWLEDGE,IF THEY HAVE BEEN GIVEN SUPERVISION OR APPROPRIATE TRAINING REGARDING THE USE OF DEVICE IN A SAFE MANNER AND UNDERSTAND THE DANGERS INVOLVED.
3. CHILDREN SHOULD NOT PLAY WITH THE DEVICE.
4. CLEANING AND MAINTENANCE TO BE PERFORMED BY THE USER SHOULD NOT BE CARRIED OUT BY CHILDREN WITHOUT SUPERVISION.
5. IF THE POWER CABLE IS DAMAGED, IT MUST BE REPLACED BY THE MANUFACTURER OR BY ITS AFTER-SALES SERVICE OR SILIAR QIALITIED PERSONNEL IN ORDER TO AVOID A DANGER.

OPERATION AND MAINTENANCE

A Maintenance for the machine

1. Please often clean the surface of the water cooler machine and keep it clean.
2. Do not pour tea dregs into the basin to avoid blocking up the drain pipe.
3. Cut off the power if long time of no using (over three days)to avoid overheating.
4. Shall keep the surroundings and the ground near the machine dry, if there are leakages, shall close the water recourse and cut off the power, and then inform our company or agents.

B Maintenance for the filter element

1. Two filter elements usually need to be changed one time in 3-6months or so, (it differs from water quality and quantity)to avoid the appearances of dregs and bacterium etc. Please purchase them from the distributors of our company.
2. Shall cut off the power when replacing the filter elements, close the water recourse and open the front panel, back-out the shell of the filter element clockwise(there are special tools provided with the machine), tear off the filter element, change new filter element(at the position of the inlet, it is colating at the position of the outlet, it is finely filtering), screw the shell of the filter element counter clockwise.

INSTRUCTIONS

A .Before installation(do not get through the power)

1. Place the machine on level ground, keep it 15cm away from the wall to let air through.
2. Do not place high-pressure articles, combustibles and conducting materials etc. near the machine.
3. Do not keep it sun-scorched and rain-drenched to avoid dangers.
4. Please use running water recourse, do not use other water recourses insufficient, need to add a blower pump, if the hydraulic pressure too high, need to add a pressure reduction valve. We suggest the water pressure is adjusted to 0. 2MPa-0. 25MPa.

B. Disposing pipes

1. The method for disposing pipes in this booklet(See parts notes) only give some instructions to ordinary circumstances, under special circumstances, please design another in accordance with the work field (Ask our company or agents to design and install).
2. Shall install a water inlet valve on the intake channel, for the convenience of maintenance in the future.
3. Please adopt the standardized fittings provide by the machine, if adopt other fittings, the resistance to pressure of the fittings shall be 1 Mpa, to avoid a leaking in the future.
4. Take down the front panel(lift up the front panel and pull it outward),tear off the shells of two filter elements, install two filter elements provided the machine(at the position of the inlet, it is colating, the position of outlet, it is finely filtering) please screw it with a special wrench.
5. Separately install two stainless steel hook-type taps two outlets on the basin.
6. Please connect the drinker and the running water pipe with 3/8 joint and a highpressure soft tube; the drain pipe connects the outlet of the machine.

C Power distributions (please do not get through the power first)

1. Please distribute the power according to the voltage indicated on the data plate of the machine.
2. Must use three-core sockets with ground wires(the ground wire shall be connected well.
3. After finished distribution, do not get through the power to avoid overheating and damaging the machine.

D Steps of installation

1. All the allocations and distributions shall be finished in accordance with the above instructions.
2. Open the water inlet valve, lift up the press-handles of the red and blue taps. Lay down the press-handles until two taps drain water for a while.
3. Open the cooling switch.
4. Install the front panel.

After finished the installation, please check whether there are leakages from the machine, if there are leakages, please cut off power immediately and close the water recourse and repair it.

FEATURES

This machine can get rid of dregs, peculiar smell, colon bacillus, slight chemical medicines etc.
This machine possesses big capacity, stainless steel shell, safe and sanitary stainless steel inner bladder, low noise etc
This machine is a kind of drinker combining purification, supply for continual cold and warm water and is an ideal drinker suitable for schools hospitals, organs and factories and various public places etc.

TECHNICAL DATA

Function	Voltage	Frequency	Cooling Power	Cooling Capacity
Cold Water	50-60 Hz	220V - 240 V	120 W	25 L/h (7-12 °C)

MAINTENANCE

PROBLEM	REASON	MÉTODO DE FIJACIÓN
Not cooling	The cooling switch keeps closed	Open the switch
Not cooling	The socket is cut off	Change the socket or check the power
Water leakage	The water pipe damaged	Closed the power and inform repairs
Water too small	The filter elements is dirty	Change the filter elements
No water drain out of the tap	Water inlet valve closed or water break	Open the intake valve or check the water resource
Drainage not smooth	Dregs has been blocked up the drain pipe	Remove the obstruction with the iron wires

*If there are any other breakdowns, please contact with our company or agents.

ANNEX LIST

NAME	QUANTITY
6M water pipe	1 PC
Filter	1 Set / 2 PCS
Drain pipe	1 PC
Joint	2 Sets
Wrench	1 PC
Inlet tube	1 PC
Operation Instruction	1 PC